

JANITORIAL EQUIPMENT

Industrial Safety Welding Oilfield Construction

Brush & Broom Handles.....	326	Mop Heads	328
Brushes & Brooms.....	321,322	Mops	327
Cigarette Disposal.....	329,330	Pails & Tubs.....	329
Detergents.....	314	Sponges & Hand Pads	332
Dishwashing Cleaners	313	Squeegees.....	327,328
Disinfectants	314,315	Tissues	332,333
Dust Pans	326	Towels & Wipers.....	334,335
Floor & Carpet Cleaners	313	Trash Can Accessories.....	330,331
Glass Cleaners.....	315,316	Trash Can Liners	331,332
Hand Cleaners	317,318	Trash Cans	330
Hand Sanitizers.....	316	Vacuum Parts & Accessories.....	312,313
Mop & Squeegee Handles.....	328	Vacuums.....	310,311
Mop Buckets	328,329		





DeWalt® Wet/Dry Vacuums



Features:

- High efficiency filter traps 99.7% of drywall dust
- Wet/Dry filter eliminates change overs
- Washable filter- tap or water rinse to clean
- Drain port on tank for easy emptying of liquids
- On-board hose, cord and accessory storage provides convenient transport and storage
- Washable filter, tap or water rinse to clean
- Heavy-duty rubber hose provides durability and flexibility

Includes: Crevice Tool; Heavy Duty Rubber Hose; Wide Nozzle

SKU	Capacity Vol.	Hose Dia	Hose Length	Wt.
115-DC500	2 gal	1 1/4 in	5 ft	9.7 lb



Complete Vacuum Units



Features:

- Static conductive pneumatic vacuum
 - Designed for heavy-duty cleaning
- Air Consumption:** 68 SCFM
Static Pressure: 185 inH2O
Flow: 89 SCFM
Compressor Size [Min]: 15 hp
Inlet Size: 3/4 in (NPT)
Includes: Drum & Dolly; Vacuum Head w/Filter; 12 in Wide Metal Wet/Dry Tool; 2 in x 20 ft Vinyl Vacuum Hose; 24 in Long Metal Crevice Tool; 3/4 in x 20 ft Air Hose w/Fittings; 4 ft Metal Wand

SKU	Capacity Vol.	Height	Width	Length
335-N551BC	55 gal	42 in	25 in	25 in



ProVac Series Wet/Dry Vacuums



Features:

- 2-Piece drum for improved durability
- Quick-Release accessory storage bag
- Scroll Noise Reduction for quiet operation
- Sturdy cart, push handle, and large rear wheels for convenient maneuverability

Tank Material: Polypropylene

Power Capacity: 6 1/2 hp

Voltage: 120 V

Amps: 12 A

Cord Length: 20 ft

Includes: (2) Extension Wands; 2-1/2 in x 7 ft. Tug-A-Long Locking Hose; 3-Layer Fine Dust Filter; Crevice Tool; Muffler/Diffuser; Multi-purpose (Car) Nozzle; Owners Manual; Utility Nozzle; Wet Nozzle

SKU	Capacity Vol.	Width	Wt.
632-31693	16 gal	27 in	35 lb

Ridgid® Wet/Dry Vacuums



Features:

- Power head with new patented SNR "Scroll Noise Reduction" design
- Tug-A-Long™ positive locking hose
- Removable accessory storage bag
- Filtration - 3-layer material treated with microban
- Large built-in drain
- Tug-A-Long positive locking hose

Capacity Vol.: 14 gal

Tank Material: Polypropylene

Power Capacity: 6 hp

Voltage: 120 V

Amps: 11 A

Cord Length: 20 ft

Includes: (2) Extension Wands; 2-1/2 in x 7 ft. Positive Locking Hose; Crevice Tool; High Efficiency Filter; Multi-purpose (Car) Nozzle; Utility Nozzle; Wet Nozzle

SKU	Height	Width	Length	Wt.
632-18718	26 in	19 1/2 in	19 1/2 in	25 lb



Industrial Economy Series Wet/Dry Vacuums



Features:

- High performance industrial peak 4.5 hp motor
- Rust resistant stainless steel tank
- Heavy duty plastic tools

Voltage: 120 V

Cord Length: 18 ft

Includes: Crevice Tool; Round Brush

Includes: (4) Extension Wands; 12 in. Floor Nozzle w/Brush & Squeegee Inserts; 6 ft. x 2-1/2 in. Hose; 6 in. Utility Nozzle; 7 ft. x 1-1/4 in. Hose; Foam & Cartridge Filter; Gulper Nozzle

Capacity Vol.: 10 gal

Tank Material: Epoxy Coated Steel

Air Consumption: 165 CFM

Frequency: 60 Hz

Amps: 10 A

SKU	#	Height	Width	Depth	Wt.
677-850-02-10	1	26 in	15 7/8 in	15 1/2 in	25 lb

Includes: Cartridge Filter; Squeegee Inserts; (2) 1.25 in Extension Wands; (2) 2.50 in Extension Wands; 1.25 X 7 ft Hose; 12 ft Floor Nozzle with Brush; 8 in Utility Nozzle; Foam Sleeve; Gulper Nozzle - 2.50 in x 6 ft

Capacity Vol.: 6 gal

Tank Material: Stainless Steel

Air Consumption: 170 CFM

Flow: 170 CFM

Power Capacity: 4 1/2 hp

Amps: 9 A

Hose Dia: 2 1/2 in

Hose Length: 7 ft

Filtration System: Cartridge Filter; Foam Filter Sleeve

Inlet Size: 2 1/2 in

Handle Material: Poly

Body Material: Stainless Steel

SKU	#	Height	Width	Depth	Wt.
677-8500110	2	23 in	17 in	17 in	20 lb

Industrial Super Quiet Wet/Dry Vacuums

Features:

- Super quiet operation
- Lock-on positive connection hose system
- Tool basket
- Tank drain
- Onboard accessory storage

Air Consumption: 175 CFM

Capacity Vol.: 8 gal

Cord Length: 18 ft

Power Capacity: 6 1/2 hp

Voltage: 120 V

Frequency: 60 Hz

Amps: 9.7 A; 10 A

Hose Dia: 1 1/4 in

Includes: (2) Metal Extension Wands w/Positive-Lock; 10 in. Combination Wet/Dry Nozzle w/Squeegee Insert; 8 ft. x 1-1/4 in. LOCK ON™ Hose; Cartridge Filter; Crevice Tool; Dual Surface Selector Nozzle; Filter Bag; Gulper Nozzle; Round Brush; Tool Basket; w/Hand Grip & Airflow Control; 10 in Wet/Dry Nozzle with Positive Lock; 9 ft x 1-1/4 in LOCK ON™ Hose



SKU	Height	Width	Depth	Wt.
677-925-28-10	25 in	15 1/2 in	17 in	25 lb

The Right Stuff® Series Extra Quiet Contractor's Wet/Dry Vacuums

Features:

- Heavy duty
- Lock-on positive connection hose system
- Tank drain
- Onboard accessory storage

Air Consumption: 175 CFM; 195 CFM

Capacity Vol.: 22 gal

Power Capacity: 6 1/2 hp

Voltage: 120 V

Frequency: 60 Hz

Amps: 10 A; 12 A

Cord Length: 18 ft

Hose Dia: 1 1/2 in

Control Type: On/Off

Includes: (2) 1-1/2 in. Extension Wands; 12 ft. x 1 1/2 in. Economy Lock On® Hose; 14 in. Floor Nozzle; Claw nozzle; Claw Utility Nozzle; Crevice Tool; High Quality Collection Bag; Ultra Web Filter; (2) 1 1/2 in Extension Wands; 1 1/2 in Adaptor; 12 ft. x 1 1/2 in. Lock On® Hose; 14 in Wet/Dry Floor Nozzle



SKU	Height	Width	Length	Wt.
677-962-54-10	33 in	19.63 in	19.63 in	35 lb



The Right Stuff® Series Industrial Wet/Dry Vacuums

Features:

- "Lock-On®" Positive connection hose system
- Anti-tip design
- Convenient tank drain for easy emptying
- Easy roll casters for greater mobility
- Oversized on-board tool storage



Air Consumption: 130 CFM; 173 CFM

Power Capacity: 4 hp

Capacity Vol.: 10 gal

Includes: (2) 1-1/2 in. Extension Wands; 12 ft. x 1 1/2 in. Economy Lock On® Hose; 14 in. Floor Nozzle; Claw nozzle

SKU	#	Height	Width	Length	Wt.
677-962-50-10	1	27 in	18 1/4 in	18 1/4 in	22 lb

Air Consumption: 165 CFM; 190 CFM

Power Capacity: 5 hp

Capacity Vol.: 12 gal

Includes: (2) 1-1/2 in. Extension Wands; 12 ft. x 1 1/2 in. Economy Lock On® Hose; 14 in. Floor Nozzle; Claw nozzle

SKU	#	Height	Width	Length	Wt.
677-962-51-10	1	29 in	18 1/4 in	18 1/4 in	27 lb

Air Consumption: 170 CFM; 190 CFM

Power Capacity: 6 1/4 hp

Capacity Vol.: 16 gal

Includes: (2) 1-1/2 in. Extension Wands; 12 ft. x 1 1/2 in. Economy Lock On® Hose; 14 in. Floor Nozzle; Claw nozzle

SKU	#	Height	Width	Length	Wt.
677-962-52-10	1	29 in	19.63 in	19.63 in	32 lb

Air Consumption: 195 CFM

Power Capacity: 6 1/2 hp

Capacity Vol.: 18 gal

Includes: (2) 1-1/2 in. Extension Wands; 12 ft. x 1 1/2 in. Economy Lock On® Hose; 14 in. Floor Nozzle; Claw nozzle

SKU	#	Wt.
677-962-53-10	1	33 lb

Air Consumption: 143 CFM

Power Capacity: 3 hp

Capacity Vol.: 6 gal

Includes: (2) Extension Wands; 10 in. Wet/Dry Nozzle; 8 ft. x 1-1/4 in. LOCK ON® Hose; Gulper Nozzle; High Efficiency Drywall Disposable Filter Bag

SKU	#	Height	Width	Depth	Length	Wt.
677-965-06-10	2	13 3/4 in	13 1/4 in	16 3/8 in	13 1/4 in	18 lb

The Right Stuff® Series Stainless Steel Wet/Dry Vacuums

Features:

- Quiet operation motor
- Lock-on positive connection hose system
- Blower feature
- Onboard accessory storage

Capacity Vol.: 10 gal

Tank Material: Stainless Steel

Power Capacity: 6 1/2 hp

Air Consumption: 175 CFM; 195 CFM

Control Type: On/Off

Includes: (2) 1-1/2 in. Extension Wands; 12 ft. x 1 1/2 in. Economy Lock On® Hose; 14 in. Floor Nozzle; Claw nozzle; Claw Utility Nozzle; Crevice Tool; High Quality Collection Bag; Ultra Web Filter; (2) 1 1/2 in Extension Wands; 1 1/2 in Adaptor; 12 ft. x 1 1/2 in. Lock On® Hose; 14 in Wet/Dry Floor Nozzle



SKU	Height	Width	Length	Wt.
677-962-55-10	29 1/2 in	17 1/4 in	17 1/4 in	36 lb

RIDGID

5-Layer HEPA Filter For Wet/Dry Vacuums

Features:

- Captures 99.97% of all particles 0.3 micron in size and larger
- Reduces allergens
- Fits all Ridgid 5 gallon (or larger) wet/dry vacs
- With patented Qwik Lock™ feature, it snaps easily on or off vacuum for easy cleaning

Includes: One filter

Used With: 5-20 Gallon Wet/Dry Vacuums



SKU	Capacity Vol.	Length	Height	Width
632-97457	5 gal - 20 gal	7 in	9 in	7 in

Wet/Dry Vacuum Accessories

Features:

- Fits all RIDGID brand vacs 5 gallons and greater
- Qwik Lock™ Fastening system
- Washable and reusable



SKU	Model No.	Wt.
632-72947	VF4000	0.1 lb
632-72952	VF5000	0.48 lb



Industrial Strength Filters

- Features:**
- Fits most wet/dry vacs

SKU	Wt.
677-903-04	1.33 lb



Dawn® Dishwashing Liquids



- Features:**
- Dawn has the power you need to fight tough grease and get the squeaky-clean dishes you're looking for
 - Dishwashing liquid that effectively cuts everyday grease

SKU	#	Capacity Vol.	Odor/Scent
608-02611	1	5 gal	Original
608-45112	1	38 oz	Original
608-57445	1	1 gal	Original
608-84988224	2	38 oz	Lemon



Floor Sweep

- Features:**
- Non-abrasive sweeping compound safe to use on any floor
 - Perfect for collecting dirt and dust on all types of wood, tile, terrazzo, and finished concrete floors without scratching
- Color:** Red

SKU	Capacity Wt.
103-FLOOR-SWEEP	50 lb



Floor Sweep Grit

- Features:**
- Contains sand as an abrasive to loosen grime and dirt that may be stuck on work floors
 - Ideal for unfinished wood and concrete floors

SKU	Capacity Wt.
103-FLOOR-SWEEP-GRIT	50 lb



Fabuloso® All-Purpose Cleaners

- Features:**
- Cleans floors, walls, kitchens, foodservice areas and restrooms
 - Advanced technology formula penetrates deep into surface to capture grease and soils
 - Cleans while leaving a longlasting scent
 - No rinsing needed, because it leaves no residue
 - Neutral pH
 - Biodegradable

SKU	Capacity Vol.	Odor/Scent
202-04307	1 gal	Lavender



Zep Professional® Sweeping Compounds

- Features:**
- All-purpose compound for use on hard floors
 - May be used in all sweeping operations
 - Safe on marble, concrete and untreated wood floors

SKU	Capacity Wt.
019-R03555	250 lb





Tide® Laundry Detergents

Features:

- Tide with Acti-Lift Technology keeps fibers smooth by reducing amount of dirt trapped in fabric
- Tide's exclusive Whiteness Booster makes whites whiter & delivers noticeable benefit after 1 wash
- Tide's improved stain fighting power breaks up dry, set-in stains as if they were fresh

Physical Form: Powder

Uses: 102



SKU	Capacity Wt.	Odor/Scent
608-82190	143 oz	Original

Ultra Liquid Tide® Laundry Detergents

Features:

- High-powered, grease-cutting formula effective on tough, greasy food stains
- Makes pretreating laundry easy

Physical Form: Liquid

Uses: 96



SKU	Capacity Vol.	Odor/Scent
608-23064	150 oz	Original



PROFESSIONAL PRODUCTS

Clorox® Disinfectant Wipes

Features:

- One-step cleaning and disinfecting
- Bleach-free formula kills 99.9% of bacteria, including staph and salmonella
- Ideal for day care centers, offices, schools and restaurants



SKU	Odor/Scent
158-01593	Fresh
158-01594	Lemon Fresh

Formula 409® Cleaner Degreasers/Disinfectants

Features:

- Improved degreasing formula
- Cleans and degreases virtually any hard, nonporous surface; no rinsing required
- Advanced anti-grease agents quickly penetrate tough soils and grease



SKU	Capacity Vol.
158-35300	1 gal
158-35306	32 oz

Pine-Sol® All-Purpose Cleaners

Features:

- Powerful formula makes up to 72 gallons per bottle
- Cleans, deodorizes and shines hard, nonporous surfaces: no-wax floors, tiles, walls, sinks, countertops, microwave, refrigerator, stoves, range hoods, deep fryers and more
- The intense scent of real clean is the reward you get every time you scrub your floors and dig into those corners
- Disinfects while it keeps your home sparkling and smelling clean



SKU	Capacity Vol.	Odor/Scent
158-35419	144 oz	Lemon Fresh

Pine-Sol® Liquid Cleaner, Disinfectant, Deodorizer

Features:

- Specially formulated to clean, disinfect and deodorize countertops, tile, sinks, garbage cans, no-wax floors and more
- Cuts dirt and grease quickly
- Effective against staph and salmonella



SKU	Capacity Vol.	Odor/Scent
158-35418	144 oz	Pine

Ultra Clorox® Germicidal Bleach

Features:

- Concentrated formula ideal for sanitizing and disinfecting washrooms, shower stalls, toilets, countertops, food prep areas and virtually all nonporous surfaces
- Effective against E. coli, HIV-1 (AIDS virus), salmonella, staph, TB and hepatitis A



SKU	Capacity Vol.
158-30966	96 oz



Lysol® Brand II I.C.™ Foaming Disinfectant Cleaners

Features:

- Hospital disinfectant in a ready-to-use quaternary formula that cleans, disinfects and deodorizes
- Effective against HIV-1 (AIDS virus), poliovirus Type 1, staphylococcus, salmonella and pseudomonas on hard, nonporous surfaces
- Contains no harsh acids, abrasives or bleach



SKU	Capacity Vol.
738-95524	24 oz

Professional Lysol® Brand Disinfectant Toilet Bowl Cleaners

Features:

- Cleans, disinfects and deodorizes toilets and urinals
- Thick liquid coats the entire bowl to remove and prevent lime scale and rust buildup
- Kills staph, pseudomonas, salmonella, E coli and HIV-1 (AIDS virus)
- Removes stubborn rust and mineral deposits as it cleans



SKU	Capacity Vol.
738-74278	32 oz

Professional Lysol® Brand III Disinfectant Spray



Features:

- Hospital disinfectant is highly effective against TB, MRSA, HIV-1 (AIDS virus), poliovirus Type 1, hepatitis A and norovirus, Tuberculocidal, virucidal, fungicidal, bactericidal
- Eliminates odors and prevents the growth of mold and mildew
- Contains no CFCs

SKU	Capacity Vol.	Odor/Scent
738-04650	19 oz	Original
738-04675	19 oz	Fresh
738-74276	19 oz	Country®
738-74828	19 oz	Crisp Linen®



PROFESSIONAL PRODUCTS

Formula 409® Glass & Surface Cleaners

Features:

- Cleans and shines windows, mirrors, stainless steel and other hard surfaces with less streaking
- Dissolves food and petroleum grease on hard surfaces



SKU	Capacity Vol.
158-35293	32 oz



HydroForce® Glass Cleaners Professional Strength

Features:

- For professional strength, streak-free glass cleaning
- Biodegradable, ready to use
- Non-abrasive foaming action
- Non-flammable, non-ozone depleting
- Streak-free performance

Color: Clear

Odor/Scent: Ammonia

Applicable Materials: Chrome; Fiberglass; Glass; Linoleum; Plastic; Stainless Steel

Removes: Dust; Fingerprints



SKU	Container Size	Acidity
125-14412	20 oz	9.7 pH

JohnsonDiversey

Windex® Glass Cleaners

Features:

- Cleans with Ammonia-D® for a streak-free shine
- Loosens soil upon contact
- Won't streak or leave a film
- Also cleans chrome, stainless steel, Plexiglas® and other hard surfaces
- Contains no phosphates



SKU	Capacity Vol.
395-90135*	32 oz
395-90139	32 oz
395-90940	1 gal

Features:

- UPS-able: capped, sprayer separate



Glass Cleaner w/Ammonia

Features:

- All-purpose glass and hard surface foam cleaner
- Cleans windshields, all glass windows, mirrors, appliances, ceramic tile, chrome, stainless steel, and aluminum



SKU	Capacity Wt.
615-GC-1	19 oz



NXT® Purell® Instant Hand Sanitizer Refills

Features:

- America's #1 instant hand sanitizer;
- Kills 99.99% of most common germs that may cause illness
- Works in as little as 15 seconds
- No water or towels needed
- Specially formulated with moisturizers to leave hands feeling soft and refreshed
- Alcohol-based

For Model: 2120-06; 2315-06; 2325-06-FSW00; 2402-01; 2420-01 Dispenser



SKU	Capacity Vol.	Quantity
315-2156-08	1,000 mL	8 per case

PURELL® Advanced Instant Hand Sanitizer Foam

Features:

- Contains moisturizers to help keep skin hydrated
- Thick, rich foam formula stays on your hand
- Fresh dispensing valve with each refill
- GOJO SANITARY SEALED™ refill helps lock out germs
- Kills more than 99.99% of most common germs

Color: Clear

Odor/Scent: Fruity%



SKU	Capacity Vol.
315-5392-02	1,200 mL

PURELL® Advanced Instant Hand Sanitizers

Features:

- No water or towels needed
- Alcohol-based
- Enhanced with four different skin conditioning agents that help maintain skin health
- Kills more than 99.99% of most common germs in as little as 15 seconds

Odor/Scent: Citrus



Features:

- Kills 99.99% of most common germs that may cause illness
- Works in as little as 15 seconds
- Specially formulated with moisturizers to leave hands feeling soft and refreshed
- Convenient bottle size

SKU	Capacity Vol.	Packing Type	VOC
315-3659-12	12 oz	Bottle w/Pump	<75.0%
315-9652-12	8 oz	Pump Bottle	<75 %

Features:

- Fresh dispensing valve with each refill
- GOJO SANITARY SEALED™ refill helps lock out germs

SKU	Capacity Vol.	Packing Type	VOC
315-5456-04	1,200 mL	Bottle w/Dispensing Valve	<75.0%

Purell® Instant Hand Sanitizers

Features:

- Kills 99.99% of most common germs that may cause illness
- Works in as little as 15 seconds
- No water or towels needed
- Specially formulated with moisturizers to leave hands feeling soft and refreshed
- Alcohol-based



SKU	Capacity Vol.	Packing Type
Clear		
315-9625-04	2 L	Bottle w/Pump
315-9625-04	2 L	Bottle w/Pump
Green		
315-9651-24*	4 1/4 oz	Bottle
315-9651-24*	4 1/4 oz	Bottle

*USDA E4 Authorization

ITW Professional Brands

SCRUBS® Hand Sanitizer Wipes

Features:

- Prevents cross-contamination
- Reduces risk of infection and disease
- Can be used where soap and water are not available
- Dissolves contaminated biofilm, and kills disease causing germs and bacteria like Streptococcus and others in 10 seconds
- E. Coli and others in 20 seconds
- Uses include sporting events, restrooms and prisons



SKU	Quantity
253-90985	85 per bucket

Industrial Safety Welding Oilfield Construction



Boraxo® Powdered Hand Soaps

Features:

- A select blend of quality soap and borax that is gentle on hands

SKU	Capacity Wt.
234-02203	5 lb



Tub-O Towels® Multi Purpose Towels

Features:

- No water necessary
- Contains lanolin, aloe vera & vitamin E
- Kills germs

Removes: Grease; Ink; Paint; Tar; Permanent Marker

SKU	Width Per Sheet	Length per Sheet
296-TW90	10 in	12 in



Cherry Gel Pumice Hand Cleaners

Features:

- New, gel-style heavy duty hand cleaner with pumice scrubbers quickly cleans heavy dirt, grease and oil
- Contains skin conditioners and is pH balanced to promote skin comfort

Color: Red

Odor/Scent: Cherry

SKU	Capacity Vol.
315-2358-02	1 gal



FAST WIPES® Hand Cleaning Towels

Features:

- High strength, disposable hand cleaning towels; removes grease, grime and other soils in one fast, easy step while taking good care of your hands

Color: White

Odor/Scent: Citrus

SKU	Quantity
315-6280-04	80 per display
315-6298-04	130 per bucket
315-6299-02	225 per bucket



Fine Italian Pumice Hand Cleaners

Features:

- Crème formula with fine Italian pumice scrubbing particles for extra cleaning action

- For removing heavy grease, tar and oil

Color: Yellow

Odor/Scent: Lemon

SKU	Capacity Wt.	Flash Point [Min]
315-1135-06	4 1/2 lb	212 °F



Hand Medic® Professional Skin Conditioners

Features:

- Moisturizes and conditions hardworking hands
- Quickly absorbs, with no greasy after-feel
- Use before work, after handwashing and at night to help maintain the skin's natural protective barrier
- Silicone and fragrance-free

Color: White

SKU	Capacity Vol.
315-8242-06	500 mL



Lemon Hand Cleaners

Features:

- For removing grease, tar and oil
- Rub, then wipe clean with a towel or rinse off

Flash Point [Min]: 212 °F

VOC: 37.0 %

Odor/Scent: Lemon

SKU	#	Capacity Wt.	Color
Cartridge			
315-0905-06	1	4 1/2 lb	White
Self-Dispensing Tube			
315-0903-12	2	22 oz	Yellow



Lemon Pumice Hand Cleaners

Features:

- For removing grease, tar and oil
- Use with or without water

VOC: 35.0 %

Color: Green

Odor/Scent: Lemon

SKU	Capacity Wt.	Flash Point [Min]
315-0915-06	4 1/2 lb	212 °F





Luxury Foam Handwash

Features:

- Rich, gentle luxury foam handwash, pre-lathered for a convenient and pleasing experience
- For general, light-duty cleaning

Packing Type: Refill

Color: Pink



SKU	Capacity Vol.	Odor/Scent
315-5261-02	2,000 mL	Cranberry

Multi Green® Hand Cleaners

Features:

- A popular multi-purpose hand cleaner for removing light to medium industrial soils and dirt
- Contains a natural citrus solvent cleaner with non-abrading scrubbing particles

Color: Green



SKU	Capacity Vol.	Odor/Scent
315-7265-04	2,000 mL	Citrus
315-7565-02	5,000 mL	Citrus

Natural Orange™ Pumice Hand Cleaners

Features:

- Quick-acting lotion formula with pumice scrubbing particles for cleaning a broad range of industrial soils, medium dirt and grease

Odor/Scent: Citrus



SKU	Capacity Vol.	Packing Type	Color
315-7255-04*	2,000 mL	Bag-in-Box	Opaque
315-7556-02†	5,000 mL	Bag-in-Box	Opaque

SKU	Capacity Vol.	Packing Type	Color
315-0955-04	1 gal	Bottle w/Pump	White
315-0957-12†	14 oz	Squeeze Bottle	White
315-0957-12†	14 oz	Squeeze Bottle	White

* USDA E4 Authorization

† Complies with current FDA regulations for cosmetic and/or over-the-counter drug products.; USDA E4 Authorization

Natural Orange™ Smooth Hand Cleaners

Features:

- Quick-acting lotion formula for cleaning a broad range of industrial soils, medium dirt and grease

Color: White

Odor/Scent: Citrus



SKU	Capacity Vol.	Packing Type
315-0945-04	1 gal	Bottle w/Pump
315-0947-12†	14 oz	Squeeze Bottle
315-0947-12†	14 oz	Squeeze Bottle

* Complies with current FDA regulations for cosmetic and/or over-the-counter drug products.; USDA E4 Authorization

Original Formula™ Hand Cleaners

Features:

- Contains soothing emollients
- For removing heavy grease, tar and oil
- Rub, then wipe clean with a towel or rinse off

VOC: 40.0 %

Color: White

Odor/Scent: Characteristic



SKU	Capacity Wt.	Packing Type
315-1109-12	18 oz	Cartridge
315-1109-12	18 oz	Cartridge
315-1111-06	4 1/2 lb	Container
315-1115-06	4 1/2 lb	Cartridge

POWER GOLD® Hand Cleaners

Features:

- A highly effective, fast-acting hand cleaner for removing the heaviest grease, tar and oil
- No harsh solvents
- Contains natural, non-irritating scrubbing particles
- Apply to dry hands, then rinse or wipe off

Packing Type: Bag-in-Box

Color: White



SKU	Capacity Vol.
315-7295-04	2,000 mL

Premium Foam Antibacterial Handwash

Features:

- Contains vitamin E and aloe
- Gentle on hands
- Kills germs on hands while providing a rich, luxurious lather

Color: Apricot

Odor/Scent: Fruit



SKU	Capacity Vol.
315-5362-02	1,200 mL



RICH PINK™ Antibacterial Lotion Soaps

Features:

- A high-performance, gentle antibacterial lotion soap
- For cleaning light soils

Test & Approvals: USDA E4 Authorization

Packing Type: Bag-in-Box

Color: Pink

Odor/Scent: Citrus



SKU	Capacity Vol.
315-7220-04	2,000 mL

Scrubbing Wipes

Features:

- Clean the toughest soils, whenever, wherever – no water needed
- These extra large, dual textured wipes contain a scrubbing side for removing tough grease, tar and adhesives and a smooth side for quick dirt absorption
- Contain skin conditioners to help prevent dryness and irritation

Test & Approvals: USDA E4 Authorization



SKU	Quantity
315-6396-06	72 per container

Skin Lotions

Features:

- Non-greasy moisturizing lotion containing allantoin, aloe and vitamin E to help condition skin
- Silicone-free

Test & Approvals: USDA E4 Authorization; FDA

Packing Type: Tube

Color: White



SKU	Capacity Vol.
315-8140-24	5 oz

SUPRO MAX™ Multi-Purpose Heavy Duty Hand Cleaners

Features:

- Fast and effective lotion hand cleaner removes tough or sticky soils and adhesives
- Unique blend of cleaners and gentle scrubbers
- Ideal for plant-wide use, body shops or wherever difficult soils are found
- Apply to dry hands, then rinse
- Non-drying formula

Packing Type: Bag-in-Box



SKU	Capacity Vol.
315-7272-04	2,000 mL
315-7572-02	5,000 mL

ITW Professional Brands

SCRUBS® Hand Cleaner Towels

Features:

- Proven way to clean your hands away from the sink
- SCRUBS® patented, dual-textured towels lock in dirt & will not transfer soils back onto hands
- Leave your hands clean, no rinsing necessary

Removes: Adhesive; Caulk; Dirt; Epoxies; Grease; Ink; Lubricants; Oil; Paint; Sealant; Tar; Urethanes



SKU	Quantity
253-42230	30 per container
253-42272	72 per pail



All Purpose Hand Cleaners

Features:

- Liquifies and gently lifts grease, grime and stains from the hands safely without water
- Leaves the hands cleaned, conditioned and without the greasy feeling and strong odors of competitive brands
- The lanolin and skin care emollients help heal rough, dry and overused hands



SKU	Capacity	Packing Type
407-105	15 oz	Squeeze Tube
407-101P	4 1/2 lb	Plastic Container
407-109	1 gal	Plastic Pail
407-104	5 gal	Pail

Citrus Blue

Features:

- Formulated with nature's natural d-Limonene solvent for safe cleaning, balanced skin conditioning and the fresh scent of citrus
- A distinctive blue color to bring a new level of cleaning the smell of work off your hands



SKU	Capacity	Packing Type
407-505	14 oz	Squeeze Tube
407-505	14 oz	Squeeze Tube
407-501-P	4 1/2 lb	Plastic Container
407-501-P	4 1/2 lb	Plastic Container



Hand Scrub

Features:

- A polyethylene scrubber
- Consistent particle size blends evenly and thoroughly
- The polyethylene is round and smooth, unlike the jagged edges of pumice and sand
- The scrubbing process is a safer, more gentle method



SKU	Capacity Wt	Packing Type
407-405	15 oz	Squeeze Tube
407-401P	4 1/2 lb	Plastic Container



Kimcare Industrie® Super-Duty Hand Cleansers w/Grit

Features:

- Specifically formulated to clean the toughest dirt, including grease and tar
- It contains aloe vera and no petroleum solvents

Packing Type: Bag-in-Box

Color: Green

Odor/Scent: Herbal



SKU	Capacity Vol.
412-91748	8 L
412-91757	8 L

WypAll® Heavy-Duty Hand Cleaning Wipes

Features:

- Pre-moistened wipes with a heavy-duty waterless cleanser
- Gets hands clean in the same place they got dirty

Width Per Sheet: 12 in

Length per Sheet: 12 in

System Format: Canister

Color: Green

Odor/Scent: Citrus



SKU	Quantity
412-58310	50 per canister

WypAll® Waterless Hand Wipes

Features:

- Pre-moistened hand cleaning wipes are waterless and ideal for hand cleaning anywhere

Width Per Sheet: 10 1/2 in

Length per Sheet: 12 1/4 in

Color: Green

Odor/Scent: Citrus



SKU	Quantity
412-91371	75 per bucket



WorkPlace Hand Cleaner Towels

Features:

- Fast acting
- Disposable
- Premoistened
- Deep cleaning, non-scratching abrasives quickly remove embedded grime
- Leaves hands clean, conditioned and softened
- Improves workplace productivity by reducing costly clean-up time

Odor/Scent: Citrus



SKU	Quantity
428-09200	72 per bucket



Fast Orange® Pumice Lotion Hand Cleaners

Features:

- Waterless, petroleum solvent-free hand cleaner that contains no harsh chemicals, mineral oils or ammonia that can sting cuts and abrasions
- Fortified with aloe, lanolin, glycerin, and other skin conditioners
- Fine Pumice formula gently deep cleans the toughest dirt
- Works great on laundry stains, scuff marks, tile floors, pet odors and many other household cleaning needs

Odor/Scent: Citrus

Removes: Grease; Grime; Ink; Oil; Paint; Tar;

Adhesives; Tree Sap



SKU	Capacity Vol.
230-25219	1 gal

Permatex®

Fast Orange® Smooth Lotion Hand Cleaners

Features:

- Waterless, petroleum solvent-free hand cleaner that contains no harsh chemicals, mineral oils or ammonia that can sting cuts and abrasions
- Fortified with aloe, lanolin, glycerin, and other skin conditioners
- Smooth formula gently deep cleans the toughest dirt
- Works great on laundry stains, scuff marks, tile floors, pet odors and many other household cleaning needs

Odor/Scent: Citrus

Removes: Grease; Grime; Ink; Oil; Paint; Tar; Adhesives



SKU	Capacity Vol.
230-23218	1 gal



Lava® Hand Cleaners

Features:

- Moisturizes
- Pumice is used in combination with other cleaning agents

Packing Type: Single Pack

Color: Green

Odor/Scent: Pleasant

Physical Form: Bar

Removes: Adhesive; Caulk; Dust; Grease; Oil; Paint; Tar



SKU	Capacity Wt.	Acidity
780-10185	5 3/4 oz	10.3 pH

Lava® Pumice Hand Cleaners

Features:

- Professional heavy-duty hand soap with pumice and moisturizers visibly cleans dirt, grease, oil, ink, tar, paint, caulk and adhesives from hands

Packing Type: Bar



SKU	Capacity Wt.	Quantity
780-10383	4 oz	48 per case



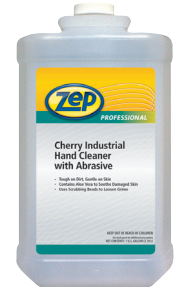
Zep Professional® Cherry Industrial Hand Cleaners w/Abrasive

Features:

- Contains emollients to moisturize hands and prevent dryness
- Removes tough greases, oils, and odors

Packing Type: Bottle

Odor/Scent: Cherry



SKU	Capacity Vol.
019-R04825	1 gal



Anchor Brand Acid Brushes

Features:

- Convenient tool for cleaning or brushing in tight areas
- Economical price makes it the perfect one-time-use choice for sticky or quick-hardening substances
- Reliable horsehair acid brush won't shed its bristles when applying surface coats, glues or solvents

Bristle Material: #2 Horsehair

Handle Material: Tin Ferrule



SKU	Bristle Rows	Overall Length
102-AB-26	3 X 7	6 in

Anchor Brand Utility Brushes

Features:

- Small hand utility brushes that are excellent for metal finishing in confined areas

Handle Type: Curved



SKU	Bristle Material	Bristle Rows	Handle Material
102-15B	Brass	3 X 7	Wood
102-15SS	Stainless Steel	3 X 7	Wood
102-30SS	Stainless Steel	3 X 7	Wood
102-37SS	Stainless Steel	3 X 7	Plastic

Warehouse Brooms

Features:

- Ideal for heavy-duty sweeping tasks
- Reliable broom corn bristles are sturdy, yet flexible

Bristle Material: 80/20 Corn/Sotol

Handle Material: Wood



SKU	Trim Length	Width	Handle Length	Handle Dia
103-W36	20 in	14 in	42 in	1 1/8 in



Counter Dusters

Features:

- Hang up hole in handle
- Bristle Material:** Black Horsehair
- Handle Material:** Hardwood
- Handle Finish:** Clear Lacquered



SKU	Block Length	Trim Length	Brush Length
455-54	13 1/2 in	2 1/2 in	9 in

Deck Scrub Brushes

Features:

- One tapered and one threaded handle hole
- Block Material:** Hardwood
- Block Finish:** Smooth Tumbled
- Bristle Material:** White Tampico



SKU	Block Length	Trim Length	Handle Length	Handle Material
455-10DT*	10 in	2 in	60 in	Hardwood
455-10DTL	10 in	2 in		

*Includes: Handle

Dope Brushes

Features:

- Hang-up hole in handle
- Useful for applying pipe dope and other industrial applications
- Bristle Material:** Grey Tampico Fiber
- Handle Material:** Wood



SKU	Trim Length	Handle Dia	Overall Length
455-1-Dope	2 1/2 in	1 1/8 in	16 in
455-2-Dope	2 1/2 in	1 1/8 in	16 in
455-4-Dope	2 in	15/16 in	16 in

Fender Wash Brushes

Features:

- Hang-up hole in handle
- Block Width:** 3 in
- Handle Material:** Hardwood
- Handle Finish:** Wax Tumbled
- Quantity:** 12 per case



SKU	Trim Length	Overall Length	Bristle Material
455-20P	2 in	20 in	Palmyra Fiber
455-20P	2 in	20 in	Palmyra Fiber
455-20T	2 in	20 in	White Tampico

Flagged Plastic Fill Line Floor Brush



Features:

- Half-round block
- Will sweep finest dust or grit
- Use for sweeping smooth highly polished floors, varnished wood or smooth concrete
- Will sweep finest dust or grit
- Block Material:** Hardwood
- Block Finish:** Clear Lacquered
- Bristle Material:** Silver Flagged-Tip Plastic
- Includes:** M-60 Handle

SKU	Block Length	Trim Length	Handle Length
455-3724	24 in	3 in	60 in

Garage Floor Brush



Features:

- Use for wet or dry sweeping rough concrete or asphalt floors such as service stations driveways, creamery, and packinghouse floors
- Will not soften when exposed to water, oils, or greases
- Block Material:** Hardwood
- Block Finish:** Clear Lacquered
- Bristle Material:** Coarse Brown Plastic
- Includes:** B-60 Handle

SKU	Block Length	Trim Length	Handle Length
455-2224	24 in	3 in	60 in

Heavy-Duty Contractor Broom

Features:

- Made of best quality selected broom corn with Palmyra stalk center
- Sewed 4 times and reinforced with a wire band
- Ideal for use in the construction trade for sweeping moderate to heavy debris
- Bristle Material:** Broom Corn; Palmyra Stalk
- Handle Material:** Wood
- Handle Finish:** Clear Lacquered



SKU	Handle Dia
455-5038-BUNDLED	1 1/8 in

Horse Hair Fill Line Floor Brush



Features:

- Half-round block
- Best quality black horsehair and plastic blend border with inside rows of black SR grade plastic
- Use to sweep fine to medium debris on all types of surfaces
- Block Material:** Hardwood
- Block Finish:** Clear Lacquered
- Bristle Material:** Black Horsehair; Plastic; SR Grade Plastic
- Includes:** M-60 Handle

SKU	Block Length	Trim Length	Handle Length
455-2624	24 in	3 in	60 in



Magnolia Brush Angle Brooms

Features:

- Flagged crème colored plastic is secured in an angled plastic cap
- Angled sweeping surface enables you to sweep hard to reach corners and crevices

Bristle Material: Flagged Plastic

Handle Material: Metal



SKU	Head Width	Trim Length	Handle Length
455-463	9 in	6 3/4 in	48 in

Magnolia Brush Household Brooms

Features:

- Fan shaped, sewed 4 times

Bristle Material: Broom Corn

Handle Material: Wood

Handle Finish: Lacquered



SKU
455-5017-BUNDLED

No. 35 Line Floor Brushes

Features:

- Center rows coarse brown plastic and border rows Silver Flagged-Tip Plastic
- Block with two threaded handle holes
- Use dry sweeping smooth or rough floors that have heavy dust and dirt accumulations

Block Material: Hardwood

Block Finish: Clear Lacquered

Bristle Material: Coarse Brown Plastic; Silver Flagged-Tip Plastic

Includes: M-60 Handle



SKU	Block Length	Trim Length	Handle Length
455-3524	24 in	3 in	60 in

Plastic Fill Line Floor Brush

Features:

- Half-round block
- Staple set in dense hole pattern
- Use for wet or dry sweeping
- Sweeps fine dust or coarse debris

Block Material: Hardwood

Block Finish: Clear Lacquered

Bristle Material: Yellow Plastic

Includes: M-60 Handle



SKU	Block Length	Trim Length	Handle Length
455-1924	24 in	3 in	60 in

Poly Fill Line Floor Brush

Features:

- Good on rough or smooth concrete, asphalt, wood, etc
- Dark red coarse gauge polystyrene plastic in center rows
- Fine gauge black plastic in border rows
- Recommended for wet or dry sweeping
- The center rows sweep the heavy debris, while the border sweeps the finer dirt
- Center rows sweep the heavy debris, while the border sweeps the finer dirt

Bristle Material: Coarse Gauge Polystyrene Plastic

Handle Length: 60 in

Includes: M-60 Handle



SKU	Block Length	Trim Length	Width	Height
455-1124	24 in	3 in	2 3/4 in	3 3/4 in

Utility Brushes

Features:

- Will not absorb water
- Will not break or crack
- Not recommended for use in acid solutions
- Recommended for use in the food industry

Block Length: 20 in

Bristle Material: White Nylon

Handle Material: Plastic



SKU	Trim Length
455-20N	2 in

Warehouse Corn Broom

Features:

- Sewed 4 times and reinforced with a wire band
- Made on a heavy-duty handle
- Designed for sweeping smooth and rough surfaces having moderate to heavy dirt accumulations

Bristle Material: Broom Corn; Fiber



SKU
455-5036-BUNDLED

Whisk Brooms

Features:

- Sewed two times, cad. Plated ring cap
- Best quality whisk broom
- Sewed two times, cad plated ring cap

Bristle Material: Broom Corn



SKU	Trim Length
455-228	11 in



Mops & Brooms Whisk Brooms



Bristle Material: 100% Broom Corn

SKU	#	Features	Trim Length
103-400WB	1	• 2-sew	10 in
103-500WB	2	• 3-sew	12 in



Black Tampico Floor Brushes

Features:

- Fine/medium sweep
- Tampico fibers resist heat and chemicals

Bristle Material: Tampico

Color: Black



SKU	Head Width	Trim Length	Width	Height
733-20224	24 in	2 1/2 in	3.6 in	3.6 in



Rubbermaid® Angle Brooms

Features:

- Ideal for cleaning hard-to-reach areas
- Cut and shaped for easy sweeping

Bristle Material: Flagged Polypropylene

Color: Gray



SKU	Handle Dia	Handle Material
640-6375-GRAY	1 in	Metal
640-6385-GRAY	1 in	Aluminum



Unisan™ Warehouse Brooms

Features:

- For heavy-duty sweeping
- Heavy metal band with four rows of stitching for strength and durability

Bristle Material: Yucca/Corn

Handle Material: Wood

Handle Finish: Lacquered



SKU	Handle Length	Handle Dia
871-932Y	42 in	1 1/8 in



Coarse Sweeping Brushes

Features:

- 1 row tempered steel wire in center

Block Material: Hardwood

Bristle Material: Black Tampico

Handle Material: Hardwood

Handle Finish: Lacquered

Color: Black

Filter Material: Tampico

Finish: Lacquered



SKU	Block Length	Trim Length	Width
804-42135	24 in	3 in	3 in

Economy Utility Scrub Brushes

Features:

- Brushes provide lasting, efficient service at minimal cost
- For general scrubbing in factories, kitchens, and institutions

Block Material: Foam

Bristle Material: Tampico

Handle Material: Foam

Filter Material: Tampico



SKU	Trim Length	Overall Length
804-25263	2 in	20 in

Garage Brooms

Features:

- For sweeping heavy, caked dirt and debris on rough surfaces

Block Material: Hardwood

Color: Maroon

Filter Material: Polypropylene

Finish: Lacquered



SKU	Trim Length	Blade Length
804-42026	3 1/4 in	24 in



Medium Sweeping Brushes

Features:
 • For general purpose sweeping on semi-smooth surfaces
Block Material: Hardwood
Block Finish: Lacquered
Trim Length: 3 in
Bristle Material: Black Tampico
Color: Black
Filter Material: Black Tampico
Finish: Lacquered



SKU	Block Length	Blade Length
804-42007	18 in	18 in
804-42008	24 in	24 in

Palmyra Fill Brushes

Features:
 • For heavy-duty sweeping of on concrete, sidewalks, garage and factory floors
 • Wet or dry applications
Block Material: Hardwood
Block Finish: Lacquered
Bristle Material: Palmyra
Color: Brown
Filter Material: Palmyra
Finish: Lacquered



SKU	Block Length	Trim Length
804-42023	24 in	4 in

Perma-Sweep™ Floor Brushes

Features:
 • Can be used for wet or dry applications
Block Material: Synthetic Foam
Trim Length: 3 in
Bristle Material: Flagged Green Synthetic
Color: Green
Filter Material: Flagged Polypropylene
Resistance: Acid; Bacteria
Used With: Perma-Flex™ Handle #44301



SKU	Block Length	Width
804-42164	24 in	3 in

Upright & Whisk Brooms

Features:
 • Heavy-duty
Bristle Material: Broom Corn; Rattan
Handle Material: Wood
Color: Natural
Filter Material: Broom Corn; Rattan
Finish: Wire banded



SKU	Trim Length	Handle Length	Overall Length
804-44008	18 in	39 in	57 in

Weiler® Angle Brooms

Features:
 • Angled trim allows access to corners, under low cabinets and other hard-to-reach areas
Bristle Material: Flagged Plastic
Handle Length: 48 in
Handle Type: Threaded Wood
Filter Material: Flagged Plastic



SKU	Head Width	Overall Length	Blade Length
804-44305	12 in	54 in	12 in

Weiler® Counter Dusters

Features:
 • For mill, factory and general use
Bristle Material: Tri-Colored Tampico
Handle Material: Wood
Color: Black
Filter Material: Tri-colored Tampico
Finish: Lacquered



SKU	Trim Length	Brush Length
804-44004	2 1/2 in	8 in

Weiler® Dope Brushes

Features:
 • With hanger for coating applications in drilling operations
Bristle Material: Mixed Tampico
Handle Material: Wood
Color: Black
Filter Material: Mixed Tampico
Finish: Sanded Hardwood



SKU	Brush Length	Handle Length	Handle Dia.	Dia.
804-44263	4 in	16 in	3 in	3 in



Wooden Broom Handles

Features:

- Smooth lacquered hardwood handle
- Durable metal threaded tip

Tip Type: Threaded Metal

Material: Hardwood

Finish: Lacquered

Handle Material: Wood



SKU	Length	Dia.	Handle Length
102-5HDLEMT	60 in	15/16 in	60 in



Iron Connector Handles

Features:

- Malleable metal connector installed on best grade handle

Material: Hardwood

Finish: Clear Lacquered



SKU	Dia.
455-D-60	1 1/8 in

Tapered Handles

Features:

- Smoothly sanded with one end rounded and the other end tapered

Material: Straight-Grained Hardwood



SKU	Dia.
455-C-60	1 1/8 in

Threaded Handles

Features:

- One end rounded and the other end is equipped with crimped-on metal thread

Finish: Clear Lacquered



SKU	Dia.	Material
455-B-60	1 1/8 in	Straight-Grained Hardwood
455-M-60	15/16 in	Hardwood



Wooden Handles

Features:

- Heavy-duty metal tip provides additional strength

Tip Type: Threaded Metal

Material: Hardwood

Finish: Lacquered

Used With: Floor and Garage brushes

Handle Material: Wood



SKU	Length	Handle Dia	Handle Length
804-44300	60 in	15/16 in	60 in



Magnolia Brush Dust Pans

Features:

- Baked enamel finish is durable with beveled edge
- Corrugated ribs to add strength

Finish: Baked Enamel

Color: Black



SKU	Material
455-6	20 Gauge Steel



Dust Pans

Features:

- Durable rear wheels improve wear resistance

SKU	Length	Width	Color	Includes
640-2531-BLA	12 3/4 in	11 1/4 in	Black	Handle

Features:

- Extra large sizes to accommodate large jobs

SKU	Length	Width	Material	Color
640-2005-CC	12 1/4 in	8 1/4 in	Plastic	Charcoal



Industrial Safety Welding Oilfield Construction



Deck Mops

Features:

- Deck mop with long handle is easy to maneuver and easy to use
- Absorbent cotton mop head scrubs floors thoroughly clean
- An economical choice for facility maintenance

Handle Length: 54 in

Material: Cotton

Color: Off-White



SKU	Mop Size	Handle Material
103-24DM	24 oz.	Wood
103-32DM	32 oz.	Metal; Wood



Steel Sponge Mops

Features:

- Cellulose head
- Color:** Bronze

SKU	Length
640-6435-BRNZ	12 in



Swinger Loop® Wet Mops

Features:

- Launderable for long product life
- Ply:** 4

Material: Cotton/Synthetic Blend

Color: White

SKU	Headband Size	Size Group
640-C153-06-W	5 in	Large



Curved Squeegees

Features:

- Squeegee frame is made of 1" angle aluminum to which a 2" wide x 1/4" thick strip of high-grade black squeegee rubber or neoprene is attached with cadmium plated screws
- Squeegee frame is made of 1 in angle aluminum to which a 2 in wide x 1/4 in thick strip of high-grade black squeegee rubber or neoprene is attached with cadmium plated screws

Blade Material: Rubber

Includes: Steel Bracket Handle

SKU	Blade Length
455-4624	24 in
455-4636	36 in



Neoprene Squeegee

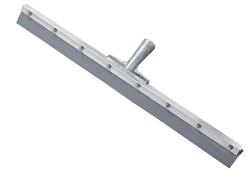
Features:

- Squeegee frame is made of 1" angle aluminum to which a 2" wide x 1/4" thick strip of high-grade black squeegee rubber or neoprene is attached with cadmium plated screws
- Non-Sparking
- Straight Squeegee with Tapered Handle Socket

Blade Material: Neoprene

Frame Material: Aluminum

SKU	Blade Length
455-4124-TPN	24 in



Straight Squeegees

Features:

- Squeegee frame is made of 1" angle aluminum to which a 2" wide x 1/4" thick strip of high-grade black squeegee rubber or neoprene is attached with cadmium plated screws

Blade Material: Black Rubber

Frame Material: Aluminum

SKU	Blade Length	Handle Dia	Handle Material	Handle Finish	Includes
455-4124	24 in	1 in	Wood	Lacquered	Handle
455-4124-TP	24 in				



Features:

- Squeegee frame is made of 1 in angle aluminum to which a 2 in wide x 1/4 in thick strip of high-grade black squeegee rubber or neoprene is attached with cadmium plated screws

SKU	Blade Length	Handle Dia	Handle Material	Handle Finish	Includes
455-4118	18 in	1 in	Wood	Lacquered	Handle
455-4130	30 in	1 in	Wood	Lacquered	Handle
455-4136	36 in	1 in	Wood	Lacquered	Handle



Water Wands

Features:

- Digs deep into tile crevices and uneven surfaces to remove liquids, leaving floor finger dry
- Rugged galvanized steel construction and splash guard
- Tapered socket

Blade Material: Foam Rubber

SKU	Blade Length
861-HM750	30 in





Floor Squeegees

Features:

- Heavy-duty construction, cast iron handle socket
- Black rubber blade for rough, heavy use

Blade Shape: Straight

Blade Material: Black Rubber

Filter Material: Rubber



SKU	Blade Length	Wt.
804-45507	24 in	6 lb



Mop Handles

Features:

- Quick change type
- Heavily zinc plated steel construction securely fastened to No. 1 grade 18" Diameter, 54" handle
- Standard wing nut construction with channel-type cross bar that detaches from one side to allow quick change of mop head

Material: Steel

Finish: Zinc Plated

Handle Material: Wood

Used With: 20 to 32 oz. Mop Heads



SKU	Dia.
455-91	18 in



Cotton Saddle Mop Heads

Features:

- Economical mop head is perfect for everyday cleaning or industrial use
- Cotton fibers are highly absorbent

Headband Size: 1 1/4 in

Material: Cotton

Used With: Big Jaw Handles; Quickway; Wingnut

Color: White



SKU	Mop Size	Length	Width
103-20MPHD	20 oz.	18 in	6 in
103-20MPHD	20 oz.	18 in	6 in
103-24MPHD	24 oz.	21 in	7 in
103-32MPHD	32 oz.	19 in	7 in



Brush Mop Head

Features:

- Made of 4 ply highly absorbent, long wearing yarns
- Mops are sewn 2 times

Material: 4 Ply Cotton Yarn



SKU	Mop Size
455-4724	24 oz.

Industrial Dust Mop Heads

Features:

- 4 ply yarn is evenly sewn on sanforized duck
- Dust mops provide outstanding performance

Material: White Absorbent Cotton Yarn



SKU
455-5124
455-5136



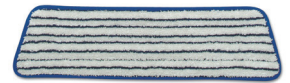
Microfiber Finish Mop Heads

Features:

- Traditionally colored and optimally shaped for smooth, even application of floor finish
- Foam liner controls liquid content and release
- Dense 3 - 5 micrometer quality fiber removes more dust, dirt and microbes than conventional cleaning products
- Advanced hook-and-loop backing—holds-up under harsh laundering conditions and attaches pads more securely
- Durable pad construction
- Third party tested tough—withstands more than 300 launderings

Used With: 18 in Quick Connect Frame

Color: White; Blue



SKU	Length	Width
640-Q800-00-WH	18 in	5 1/2 in



Cut-End Wet Mop Heads

Features:

- Four-ply, cut-end yarn
- Absorbent natural cotton fiber for general mopping
- Rayon has immediate absorbency and wet release properties ideal for finishing

• Standard heads use clamp style mop handles, lieflat heads use lieflat screw-in handles

Headband Size: 1 1/4 in

Material: Cotton; Polyester Headband



SKU	Mop Size
871-2024C	#24



Plastic Mop Buckets

Features:

- Corrosion resistant
- No crack or crevices to collect dirt
- Wringer is resistant to cleaning chemicals



SKU	Depth
455-6035-3	11 7/8 in



WaveBrake® Down Press Combo's

Features:

- High efficiency down press wringer
- Lasts twice as long as side press wringer
- Premium tubular steel and structural web molded plastic
- Accepts optional Dirty Water Bucket, 9C74



SKU	Capacity Vol.	Length	Width	Height
640-7577-88-YEL	35 qt	20.1 in	15.7 in	36 1/2 in

WaveBrake™ Bucket/Wringer Combination Packs

Features:

- The WaveBrake™ technology reduces splashing, for a safer environment
- Predominantly plastic, non-marking casters reduces touch-up cleaning
- Smooth, easy to clean surfaces

Includes: 6127-01 Wringer; 7570 Mop Bucket



SKU	Capacity Vol.	Length	Width	Height
640-7580-88	35 qt	20.1 in	15.7 in	17.4 in



Features:

- Whether you need an open or closed head option, you can count on these pails to contain paints and coatings, harsh chemicals, bulk powders (non food), petroleum products or many other liquid and dry substances

Material: Steel



SKU	Capacity Vol.	Dia.	Height
302-1252	5 gal	26 in	28 in



Magnolia Brush Galvanized Pails

Features:

- Durable long lasting containers for liquids
- Will not crack or leak

Material: Steel

Coating: Hot Dipped Galvanized



SKU	Capacity Vol.
455-10QT	10 qt
455-12QT	12 qt
455-14QT	14 qt
455-20QT	24 1/25 qt
455-8QT	8 qt

Metal Paint Pails

Features:

- Will not crack or leak
- Will accommodate 4 inch paint brushes

Material: Electroplated metal



SKU	Capacity Vol.
455-5QT	5 qt



Brute® Round Buckets

Features:

- Brute® buckets have molded-in graduations for accurate measuring
- Corrosive resistant bails with comfortable plastic grip

Dia.: 10 1/2 in



SKU	Capacity Vol.	Height	Color
640-2614-GRAY	14 qt	11 1/4 in	Gray
640-2963-GRAY	10 qt	10 1/4 in	Gray
640-2963-RED	10 qt	10 1/4 in	Red

Stock Tanks

Features:

- Seamless construction for outstanding durability
- Optional all-plastic float valve provides constant level of water
- Oversize drain plug makes for easy drainage and cleaning of stock tank;
- 1-1/2" oversize drain

Capacity Vol.: 150 gal

Material: Structural Foam



SKU	Height	Length	Width
640-4245-BLA	25 in	58 in	39 in



Butt Cans

Features:

- Galvanized steel base with polyethylene tube
- Ideal for designated smoking areas, inside or out

Material: Galvanized Steel

Resistance: Weather



SKU	Capacity Vol.	Dia.	Height
258-1202	2 gal	11 in	35 in
258-1205	5 gal	12 in	40 in



Smokers Cease-Fire® Cigarette Butt Receptacles

Features:

- Innovative self-extinguishing design safely collects unsightly cigarette butts and reduces the risk of fire
- Made of flame-retardant, sturdy polyethylene
- Won't rust, dent, or crack
- Unique rain bonnet opening
- Simply lift off lid to empty
- Tie-down notches offer security and greater stability under severe weather conditions

Dia.: 16 1/2 in

Material: Polyethylene

Resistance: Corrosive Process; Flame Retardant; Humidity; Weather



SKU	Capacity Vol.	Color
400-26800	16 qt	Pewter Gray
400-26800B	16 qt	Adobe Beige
400-26800D	16 qt	Deco Black
400-26800G	16 qt	Forest Green



Brute® Roll Out Containers



Features:

- Heavy-duty, 8" (20.3 cm) wheels afford easy mobility, even over steps or curbing
- Attached hinged lid fits tightly, swings back and locks
- Tough Dur-x™ construction lends long life. Rounded corners and smooth contours are easy to clean
- Molded-in axle retainer adds strength

SKU	Capacity Vol.	Length	Width	Height
640-9W27-G	50 gal	28 1/2 in	23 3/8 in	36 1/2 in

Brute® Round Containers

Features:

- All-plastic, professional grade construction will not rust, chip or peel
- Resists dents
- Strong, snap-on lids are available for secure, stable stacking
- Reinforced rims add strength and durability
- Built-in handles allow easy, non-slip lifting and anti-jam nesting
- Double-ribbed base increases stability and dragging capacity
- Available easy twist on, twist off dolly provides safe mobility

Material: Plastic



SKU	Capacity Vol.	Height	Dia.	Color
640-2632-YEL	32 gal	27 in	22 in	Yellow
640-2655-GRAY	55 gal	33 in	26 1/2 in	Gray



SKU	Capacity Vol.	Height	Dia.	Color
640-2632-GRAY	32 gal	27 in	22 in	Gray
640-2643-GRAY	44 gal	31 1/2 in	22 in	Gray

Slim Jim® Containers

Features:

- Efficient size and shape fits tight spaces
- Durable construction is easy to clean and provides long life

Capacity Vol.: 23 gal

Material: Plastic



SKU	Length	Width	Height
640-3540-GRAY	23 1/8 in	11 in	30 in

Brute® Dollies



Features:

- Swivel casters afford easy mobility for through the workplace
- Heavy duty 3" tread provides long life
- Easy twist on, twist off action
- Non-marking caster construction

For Model: 2632; 2643; 2620; 2655

SKU	Dia.	Height
640-2640-BLK	18 1/4 in	6 5/8 in



Brute® Round Container Lids

Features:

- Snap-on lids for secure and stable stacking
- Built in handles

For Model: 2655

Material: Plastic

Used With: Brute® Round Containers



SKU	Dia.	Height
640-2654-G	26 3/4 in	2 in



PROFESSIONAL PRODUCTS

ForceFlex® Tall Kitchen Drawstring Trash Bags

Features:

- Unique ForceFlex® diamond texture stretches to prevent rips, tears and leaks
 - Durable bag protects against leaks and kitchen trash messes
 - Drawstring grips the can so the bag stays in place
 - Made with less plastic than other flex-type plastic bags
- Color:** White



SKU	Capacity Vol.	Quantity
158-70427	13 gal	20 per box

GLAD® Drawstring Trash Bags

Features:

- Three-ply strength to avoid messy trash disasters
- Strong three-layer drawstring cinches to make closing easy and dependable
- Easy to lift and carry to make transporting trash easier
- Great for indoor or outdoor use

Thickness: 1.1 mil

Color: Black



SKU	Capacity Vol.	Quantity
158-70313	30 gal	90 per box



Linear Low-Density Economy Ecosac Liners

Features:

- Star seal bottom prevents vacuum at bottom of container that can restrict easy lifting
- All resins are 100% recyclable, inks and colorants are heavy-metal free

Thickness: 2 mil

Grade: Super/Extra-Heavy



SKU	Capacity Vol.	Length	Width	Quantity
299-ECO60SXH	55 gal	60 in	38 in	50 per case



Industrial Drum Liners

Features:

- Industrial strength drum liners feature a star seal bottom that helps prevent leakage
- Low-density polyethylene provides excellent resistance to punctures and tearing

Thickness: 2.7 mil

Color: Black



SKU	Capacity Vol.	Length	Width	Quantity
574-D38634BN	60 gal	63 in	38 in	50 per roll

Industrial Strength Low-Density Commercial Can Liners

Features:

- Star seal bottom helps prevent leakage
- Made from high-quality blended resins for superior strength and puncture resistance

Thickness: 0.7 mil

Grade: Extra-Heavy



SKU	Capacity Vol.	Quantity	Capacity Vol.
574-L3858H	60 gal	100 per carton	60 gal



Linear Low-Density Commercial Can Liners

Features:

- Star seal bottom helps prevent leakage
- Made from high-quality blended resins for superior strength and puncture resistance Super/Extra-Heavy

Color: Gray

SKU	Capacity Vol.	Thickness	Quantity
574-G3858G	60 gal	1.3 gauge	100 per case
574-G4347G	56 gal	1.3 gauge	100 per case

Extra-Heavy

Color: White

SKU	Capacity Vol.	Thickness	Quantity
574-VW3858X	60 gal	0.9 gauge	100 per case

Medium

Color: White

SKU	Capacity Vol.	Thickness	Quantity
574-W2432X	10 gal	1/2 gauge	500 per case



Trash Can Liners

Includes: Twist Ties

Features:

- Extra heavy-duty contractor bags used for rugged clean-up and heavy trash

Includes: Hold-Tite Rubber Bands; Large Rubber Band

Thickness: 2.5 mil

Color: Black

Grade: Heavy

SKU	Capacity Vol.	Quantity
795-HB33-60	33 gal	60 per roll

Features:

- Large rolls of heavy industrial weight plastic bags in dispenser boxes

Includes: Hold-Tite Rubber Band

SKU	Capacity Vol.	Thickness
795-FB13-150	13 gal	1.25 mil
795-FB33-100	33 gal	1.5 mil
795-FB55-50	55 gal	1.75 mil

Includes: Rubber Bands

Thickness: 3 mil

Color: Black

Grade: Heavy

SKU	Capacity Vol.	Quantity
795-HB42-20	42 gal	20 per roll



Trash Can Liners Extra Heavy Duty

Features:

- Extra heavy-duty contractor bags used for rugged clean-up and heavy trash

Thickness: 3 mil

Color: Black

Includes: Hold-Tite Rubber Bands;

Large Rubber Band; Twist Ties

SKU	Capacity Vol.	Quantity
795-HB55-30	55 gal	30 per roll



Trash Can Liners w/Recycled Plastic

Features:

- Post consumer recycled plastic

Thickness: 3 mil

Color: Black

Includes: Hold-Tite Rubber Bands; Twist Ties

Grade: Heavy

SKU	Capacity Vol.	Quantity
795-HB55-30-R	55 gal	30 per roll



Mr. Clean® Magic Erasers

Features:

- Powerful multi purpose cleaning with water alone
- Great for cleaning car windshield glass, leather athletic shoes, walls, doors, baseboards, glass table tops and more

Color: White

SKU	Width	Length	Height
608-82027	6.18 in	1.51 in	9.17 in



Bathroom Tissues

Features:

- Embossed bath tissue

Color: White

Ply: 2

Width: 3/16 in

Length: 9/32 in

Length per Sheet: 4 1/2 in

System Format: Roll

SKU	Width Per Sheet	Quantity
088-6150	3 3/4 in	500 per roll
088-6180	3 in	500 per roll



JAGUAR PLASTICS.
Commercial Can Liners

JRT Bathroom Tissue

- Features:**
- Embossed bath tissue
 - Contains 65% recycled material
- Color:** White
Ply: 2
System Format: Jumbo Roll



SKU	Dia.
088-6100	9 1/8 in



Acclaim® Bath Tissue

- Features:**
- Non-perforated
- Color:** White
Ply: 2
System Format: Jumbo Roll



SKU	Length	Dia.
603-13728	1,000 ft	9 in

Angel Soft ps Ultra® 2-Ply Premium Embossed Bathroom Tissue

- Features:**
- Brings an added touch to our premium line
 - NOW SOFTER & BRIGHTER
- Color:** White
Ply: 2
Length per Sheet: 4 1/2 in
System Format: Roll



SKU	Quantity
603-16560	400 per roll

Angel Soft ps® 2-Ply Premium Embossed Bathroom Tissue

- Features:**
- Angel Soft ps is the brand of premium 2-ply bathroom tissue that delivers the appearance and softness of at-home tissue for today's discerning business customers and employees.
- Color:** White
Ply: 2
Length per Sheet: 4.05 in
System Format: Roll



SKU	Quantity
603-16880	450 per roll

Envision® Bathroom Tissue

- Features:**
- Soft, biodegradable
- Color:** White
Ply: 2
Length per Sheet: 4.05 in
Width Per Sheet: 4 in
System Format: Roll



SKU	Quantity
603-19880/01	550 per roll



Kleenex® Cottonelle® Bathroom Tissue

- Features:**
- This tissue offers the soft, plush quality that you expect at home
- Color:** White
Ply: 2
Length per Sheet: 4.09 in
Width Per Sheet: 4 in



SKU	Quantity
412-17713	506 per roll

Kleenex® Facial Tissue

- Features:**
- Delivers premium quality, with outstanding value
 - The SIGNAL® feature alerts you when it's time to change the box
- Color:** White
Ply: 2
Material: Paper



SKU	Length per Sheet	Width Per Sheet	Quantity
412-21400	8.4 in	8.4 in	100 per box
412-21606	8.4 in	8.4 in	125 per box

Scott® Standard Roll Bathroom Tissue

- Features:**
- Is the ideal balance of strength, absorbency and economy
- Color:** White
Ply: 2
Length per Sheet: 4.1 in
Width Per Sheet: 4 in



SKU	Dia.
412-04460	4.6 in



Tradition® JRT® Jr Bathroom Tissue

Features:

- Reliable, practical and long-lasting jumbo roll bath tissue
- 100% Recycled Fiber Content

Color: White

Ply: 2

Width Per Sheet: 3.55 in

System Format: Jumbo Roll



SKU	Length	Dia.
412-02129	18 in; 1,000 ft	9 in



Facial Quality Toilet Tissue

Features:

- Softer and more absorbent tissue provides at-home quality
- Premium wrapper adds an upscale touch to any facility
- Safe for sewer and septic systems
- 4.5" core, 100% recycled fibers, 20% post-consumer

Color: White

Ply: 2

Width Per Sheet: 4 1/2 in

System Format: Roll



SKU	Length per Sheet	Quantity
859-2200	4 1/2 in	500 per roll
859-2240	3 1/2 in	500 per roll



Center-Pull Hand Towels

Features:

- Sheets contain 55% post-consumer recycled materials

Color: White

Ply: 2



SKU	Length per Sheet	Width Per Sheet
088-6400	7 7/8 in	10 in

Household Perforated Paper Towel Rolls



Features:

- Perfect for household clean up
- Embossed paper towel
- Two-ply absorbency for general cleaning

Color: White

Ply: 2

SKU	#	Length per Sheet	Width Per Sheet	Quantity
088-6272	1	9 in	11 in	30 per case
088-6274	2	9 in	11 in	100 per roll

Multi-Fold Paper Towels

Features:

- Hand drying towels
- For use in commercial restroom dispensers (sold separately)

Length per Sheet: 9 in

Width Per Sheet: 9.45 in



SKU	Color	Quantity
088-6200	White	250 per pack
088-6202	Kraft	250 per pack

Non-Perforated Hardwood Roll Towels

Features:

- Designed primarily for hand-drying in washrooms when combined with the appropriate dispenser
- Embossed
- 2" core

Ply: 1



SKU	Color	Width	Length	Dia.
088-6252	Kraft	8 in	350 ft	5.85 in
088-6254	White	8 in	800 ft	8 in
088-6256	Kraft	8 in	800 ft	8 in



AccuWipe® Recycled 3-Ply Delicate Task Wipers

Features:

- Gentle on delicate surfaces, especially when used wet
- Low lint helps prevent contamination
- Wipes clean effectively removing surface residue
- Strong: holds up in use, even when used wet
- Absorbs liquids and spills

Color: White

Ply: 3



SKU	Length per Sheet	Width Per Sheet
603-29778/03	16.7 in	1 in

Brawny Industrial® Heavy-Duty Shop Towels

1

2



Features:

- Multi-use shop towels made from super-strong fibers resist tears and stand up to tough industrial cleaning
- Hold their strength even when wet, and can be rinsed and reused
- Cloth-like absorbency for streak-free cleaning
- Convenient, wall-mountable pop-up box for easy dispensing

Color: White

SKU	#	Length per Sheet	Width Per Sheet	Quantity
603-250-70	1	16 1/2 in	9 1/8 in	100 per box
603-25081	2	12 1/2 in	9.1 in	132 per box
603-25081	2	12 1/2 in	9.1 in	132 per box

Brawny Industrial™ Light-Duty Wipers

Features:

- Paper wipers provide strength and fast absorption
- Ideal for cleaning glass, but tough enough for general maintenance work

Color: White



SKU	Length per Sheet	Width Per Sheet	Quantity
603-29221	8 in	12 1/2 in	148 per box

Brawny Industrial™ Medium-Duty Wipers

Features:

- Ideal for cleaning glass, but tough enough for general maintenance work
- Paper wipers provide strength and fast absorption

Color: White

Ply: 4



SKU	Length per Sheet	Width Per Sheet	Quantity
603-29050/03	9 1/4 in	16.7 in	166 per box

Envision® Hand Towels

Features:

- Recycled, minimum 40% post consumer

Color: Brown

Ply: 1



Features:

- High quality, embossed

SKU	Length per Sheet	Width Per Sheet	System Format	Quantity
603-23504	10 1/4 in	9 1/4 in	Single-Fold	250 per pack

Features:

- Non-perforated
- Designed primarily for hand-drying in washrooms when combined with the appropriate dispenser

SKU	System Format	Quantity
603-26301	Hard Roll	6 per case



Preference® Perforated Paper Towels

Features:

- Cost-effective solution for everyday cleaning and wiping tasks
- Lasting strength and absorbency

Color: White

Ply: 2



SKU	Length per Sheet	Width Per Sheet
603-273	8.8 in	11 in
603-27385	8.8 in	11 in



SofPull™ Premium Centerpull Paper Towels

Features:

- Soft, thick, absorbent sheets dispense fully open and dry effectively with less waste
- Color:** White
- Ply:** 1
- System Format:** Center Flow Roll



SKU	Length per Sheet	Quantity
603-28124	7.8 in	320 per roll

Soft-n-Fresh® Disposable Airlaid Wiper

Features:

- Soft and bulky when wet for patient care in health care facilities
- Convenient, protective, spill-resistant poly packaging
- Springy material
- Easy to open when rinsed and squeezed out
- Color:** White



SKU	Length per Sheet	Width Per Sheet
603-29505	11.62 in	12 1/2 in



Kimtech Prep® Kintex® Wipers

Features:

- Designed for wiping tasks where low lint or use of chemicals are required
- Engineered for critical applications involving solvents, inks, and paints
- Acid, base and solvent resistant
- Perfect for use with lubricants, oil and grease
- Polypropylene construction
- Color:** Blue
- Ply:** 1
- System Format:** 1/4 Fold



SKU	Length per Sheet	Quantity
412-33560-50	14.4 in	66 per pack

Kimtech Science® Kimwipes® Delicate Task Wipers

Features:

- One-at-a-time dispensing
- Color:** White
- System Format:** Pop-Up® Box



Features:

- Is a light-duty wiper that can handle a variety of delicate tasks
- Easily wipes up liquid and dust
- Anti-stat dispensing reduces lint and electrostatic discharge and controls usage
- Portability reduces waste

SKU	Ply	Length per Sheet	Width Per Sheet	Quantity
412-34120	1	8.4 in	4.4 in	280 per box
412-34120	1	8.4 in	4.4 in	280 per box

Features:

- Is a light-duty wiper that can handle a variety of delicate tasks
- Easily wipes up liquid and dust
- Anti-stat dispensing reduces lint and electrostatic discharge and controls usage
- Portability reduces waste
- Easily wipes up liquid and dust

SKU	Ply	Length per Sheet	Width Per Sheet	Quantity
412-34155	1	8.4 in	4.4 in	280 per box
412-34256	1	16.6 in	14.7 in	140 per box

Features:

- Offers a unique combination of low-lint tissue softness and multiply absorbency that's perfect for a multitude of delicate tasks
- Multi-ply absorbency, wipes up liquid and dust
- Wipes clean, extra low-lint and extractable performance

SKU	Ply	Length per Sheet	Width Per Sheet	Quantity
412-34721	2	16.6 in	14.7 in	90 per box
412-34721	2	16.6 in	14.7 in	90 per box



Kitchen Roll Towels

Features:

- Strong, tear-resistant towel for wiping up spills and drying hands

Color: White

Ply: 1



SKU	Length per Sheet
412-13964	11 in

Kleenex® C-Fold Paper Towels

Features:

- Towels that you can look to for softness, absorbency and performance

Color: White

Ply: 1

System Format: C-Fold



SKU	Length per Sheet	Width Per Sheet	Quantity
412-01500	13.15 in	10 1/8 in	150 per pack



Kleenex® Towels

Features:

- ABSORBENCY POCKETS* that absorb lots of water fast, for superior hand drying
- Soft premium towel with embossed pattern

Color: White

System Format: Hard Roll



SKU	Dia.	Quantity
412-50606	7.9 in	6 per case

Kleenex® White Hard Roll Towels



Features:

- ABSORBENCY POCKETS* that absorb lots of water fast, for superior hand drying
- Soft premium towel with embossed pattern

Color: White

Ply: 1

System Format: Hard Roll

SKU	Length	Dia.
412-01080	425 ft	7.9 in

Scott® Kitchen Roll Towels

Features:

- More sheets on a roll to last longer
- Smaller case for easier handling and storage
- Made with ABSORBENCY POCKETS* for a soft and absorbent performance to handle tough spills and clean-up

Color: White

Length per Sheet: 8.78 in

Width Per Sheet: 11 in

System Format: Standard Roll



SKU	Dia.	Quantity
412-41482	4.9 in	128 per roll



Scott® Rags In-A-Box



Features:

- Ideal for painting, wiping up spills, staining and refinishing furniture
- Soft, absorbent towels that perform like a cloth
- Built-in handle allows you to take the box on the job while keeping rags clean

Color: White

Length per Sheet: 13 in

Width Per Sheet: 10 in

SKU	Quantity
412-75260	200 per box

Scott® Shop™ Towels



Features:

- Ideal for changing oil, refilling fluids and general maintenance
- Strong, absorbent towel is great for wiping hands, tools and cleaning up grease, oil, grime and fluids
- Works when wet

Color: Blue

SKU	Length per Sheet	Width Per Sheet	System Format	Quantity
412-75130	10.4 in	11 in	Roll	55 per roll
412-75190	11 in	13 in	Pop-Up® Box	200 per box

Scott® Towels



Center Flow Roll

Features:

- Ideal for one-handed dispensing

SKU	Color	Ply	Length per Sheet	Width Per Sheet	Quantity
412-01010	White	2	15 in	8 in	500 per roll

Multi-Fold

Features:

- Dependable, folded towels that you can look to for softness, absorbency and performance

SKU	Color	Ply	Length per Sheet	Width Per Sheet	Quantity
412-01804-50	White	1	9.4 in	9 1/4 in	250 per pack

Roll

Features:

- Meets EPA standards with a minimum of 40% post-consumer waste content
- Elemental chlorine-free bleaching
- Packaging reduction through providing greater feet per case

SKU	Color	Ply	Length per Sheet	Width Per Sheet
412-02000	White	1	950 ft	8 in

Hard Roll

Features:

- Delivers one-at-a-time dispensing, every time
- Eliminates tabbing and tearing
- Guaranteed to reduce towel usage
- Ideal replacement for multi-fold towels
- Preferred 2 to 1 for looks, softness and hand drying performance over leading competitive multi-fold towels

SKU	Color	Ply	Dia.
412-02068	White	1	7.85 in

Features:

- Have a minimum of 60% post-consumer recycled waste
- Elemental chlorine-free (ECF) bleaching and are made from recycled cardboard
- Provide reliable quality, softness, and absorbency and can last a long, long time
- 100% recovered materials

SKU	Color	Ply	Dia.
412-01040	White	1	7.85 in
412-04142	Natural	1	7.36 in

Features:

- Provide reliable quality, softness, and absorbency and can last a long, long time
- Elemental chlorine-free (EFC) bleaching
- Made of 40% post-consumer waste content
- More towels, same space, less time, soft and absorbent. 25% more feet than the SCOTT® 1040 roll towel without increasing roll diameter or sacrificing performance

SKU	Color	Dia.
412-01000	White	7.87 in

Industrial Safety Welding Oilfield Construction



WypAll® L20 Wipers

Features:

- Textured side for cleaning power
- Contains no binders or glues
- Multi-ply capacity for large spills



SKU	Color	Length per Sheet	Width Per Sheet	Quantity
1/4 Fold				
412-47000	Brown	13 in	12 1/2 in	68 per pack
412-47022	White	13 in	12 1/2 in	68 per pack
Brag® Box				
412-34607*	White	16.8 in	12 1/2 in	176 per box
Pop-Up® Box				
412-47033	Brown	16.8 in	9.1 in	88 per box

WypAll® L30 Wipers

Color: White

Ply: 1

Features:

- Ideal for general purpose, light duty cleanups
- Janitorial and maintenance wiping
- Process line wiping and cleaning



SKU	Length per Sheet	Width Per Sheet	Quantity
Center Flow Roll			
412-05820	15.2 in	9.8 in	300 per roll
412-05820	15.2 in	9.8 in	300 per roll

Features:

- Ideal for general purpose, light duty cleanups
- Removes soils and liquids from face and hands
- One-at-a-time dispensing for users on the go

SKU	Length per Sheet	Width Per Sheet	Quantity
Pop-Up® Box			
412-03086	10.8 in	10 in	120 per box
412-03086	10.8 in	10 in	120 per box

Features:

- General purpose, light-duty clean-ups
- Process line wiping and cleaning
- Strong, yet soft enough for personal use
- Cloth-like feel at a value price



SKU	Length per Sheet	Width Per Sheet	Quantity
1/4 Fold			
412-05812	13 in	12 1/2 in	90 per pack
Jumbo Roll			
412-05841	13.3 in	12.4 in	950 per roll
Pop-Up® Box			
412-05800	16.4 in	9.8 in	100 per box
412-05816	16.4 in	9.8 in	720 per case
Small Roll			
412-05843	11 in	10.4 in	

WypAll® L40 Wipers

Features:

- Ideal for routine industrial cleaning and maintenance
- Removes soils and liquids from face and hands

Ply: 1



SKU	Length per Sheet	Width Per Sheet	System Format	Quantity
Blue; Blue				
412-05740*	16.4 in	9.8 in	Pop-Up® Box	100 per box
White				
412-03046†	10.8 in	10 in	Pop-Up® Box	90 per box
412-05007†	13.4 in	12 1/2 in	Jumbo Roll	750 per roll
412-05027				
412-05701†	14.4 in	12 1/2 in	1/4 Fold	56 per pack
412-05790†	16.4 in	9.8 in	Pop-Up® Box	100 per box

* One-at-a-time dispensing for users on the go

† High capacity perforated roll replaces 100 pounds of rags

WypAll® X50 Wipers

Features:

- Combines versatile performance with economical design for light-duty tasks
- Reinforced for wet and dry strength, smaller sheet size means less waste

Color: White

Length per Sheet: 9.8 in

Width Per Sheet: 13.4 in

System Format: Jumbo Roll

Material: Pulp/Polypropylene



SKU	Quantity
412-35015	1,100 per roll

WypAll® X60 Wipers

Features:

- Brings the absorbing power of Hydrokint® technology to a lighter weight wiper
- Reinforced for extra scrubbing and cleaning power
- No adhesives or binders
- Reinforced for extra scrubbing and cleaning power
- Tough enough for big jobs, soft enough for face and hands

Material: Pulp/Polypropylene



SKU	Color	Length per Sheet	Width Per Sheet	Quantity
1/4 Fold				
412-34865	White	14.4 in	12 1/2 in	76 per pack
Brag® Box				
412-34015	White	16.8 in	12 1/2 in	180 per box
Jumbo Roll				
412-34955	White	13.4 in	12 1/2 in	1,100 per roll
412-34965	Blue	13.4 in	12 1/2 in	1,100 per roll
Pop-Up® Box				
412-34790	White	16.8 in	9.1 in	126 per box
Small Roll				
412-35401	White	13.4 in	9.8 in	130 per roll
412-35411	Blue	13.4 in	9.8 in	130 per roll



WypAll® X70 Workhorse® Rags



Features:

- Durable, absorbent rags that stay strong for better cleaning performance
- Reusable, long lasting performance
- Cleans oil, grime, and solvents
- Made with our high-tech Hydroknit® Fast Absorbing Material

Color: Blue

Ply: 1

Material: Pulp/Polypropylene

SKU	Length per Sheet	Width Per Sheet	System Format	Quantity
412-41412	16.8 in	9.1 in	Pop-Up® Box	100 per box

Color: White

Ply: 1

Material: Pulp/Polypropylene

SKU	Length per Sheet	Width Per Sheet	System Format	Quantity
412-41100	16.6 in	14.9 in	Flat Sheet	300 per box
412-41200	14.4 in	12 1/2 in	1/4 Fold	76 per box
412-41455	16.8 in	9.1 in	Pop-Up® Box	100 per box
412-41600	13.4 in	12 1/2 in	Jumbo Roll	870 per roll

Features:

- Durable, absorbent wiper stays strong for better cleaning performance
- Reusable, long-lasting performance
- Cleans oil, grime and solvents
- Made with HYDROKNIT Fast Absorbing Material
- Ideal for all manufacturing and maintenance and repair

Color: Blue

SKU
412-41611

WypAll® X80 Towels



Features:

- Maintains strength in solvent as well as laundered shop towels
- Absorbs more oil and water faster pound for pound than laundered shop towels
- Made using patented Hydroknit® Fast Absorbing Material
- Reusable, durable, and extremely absorbent

Brag® Box

SKU	Color	Length per Sheet	Width Per Sheet	Quantity
412-41041	Blue	16.8 in	12 1/2 in	160 per box
412-41044	White	16.8 in	12 1/2 in	160 per box

Jumbo Roll

SKU	Color	Length per Sheet	Width Per Sheet	Quantity
412-41025	Cotton White	13.4 in	12 1/2 in	475 per roll
412-41043	Blue	13.4 in	12 1/2 in	475 per roll
412-41055	Red Hot	13.4 in	12 1/2 in	475 per roll

Pop-Up® Box

SKU	Color	Length per Sheet	Width Per Sheet	Quantity
412-05930	Red Hot	16.8 in	9.1 in	80 per box
412-41048	Cotton White	16.8 in	9.1 in	400 per case

Oklahoma Waste & Wiping Rag Co.



Rags

Features:

- Disposable
- Color:** Assorted

SKU	Material
552-105-50	Cotton
552-107-25	Cotton
552-118-10	Knit

Oklahoma
Waste & Wiping Rag Co.

Turkish & Regular Cotton Terry Mixed Towels



Features:

- Made from a bath towels type material
- Mainly cotton fibers

Material: Cotton

SKU	Wt.
552-114-10	10 lb
552-114-25	25 lb



Bounty® Paper Towels

Features:

- Lets you thoroughly clean and then throw the towel away, removing the potential breeding ground for germs
- Stronger when wet, so you can rinse it, reuse it, and throw it away
- Super absorbent – gets spills up fast
- “The Quilted Picker Upper”
- Absorbs faster than any other paper towel so you can get the job done right the first time
- Great for spray-and-wipe cleaning
- Let’s you clean, rinse, re-use the towel and throw it away, removing the potential breeding ground for germs
- New Bounty Has Trap and Lock Technology For Super Absorbency and Durability, 1 Sheet Locks In The Mess
- Superior durability when wet
- Thick, Strong and Durable

Color: White

Ply: 2



SKU	Length per Sheet	Width Per Sheet	Quantity
608-81539	11 in	10.4 in	48 per roll

simple green

Simple Green® Safety Towels™

Features:

- Pre-moistened with a safer, non-citrus, water-based cleaning/degreasing formulation that is non-toxic and biodegradable
- Towels utilize Crystal Simple Green cleaning/degreasing formulation - no added color or scent
- Easy to use dispenser contains 75 pre-moistened cleaning towels that are large, sturdy & lint free
- Towels feature a scrubbing side and a soft/smooth side - both non-scratching
- Safe to use on metals, finished wood, laminates, fiberglass, porcelain, ceramic, stone and a variety of other surfaces.

Color: white towels

Width Per Sheet: 10 in

Odor/Scent: Odorless

Removes: Carbon; Grease; Grime; Oil; Soot; Tar; Wet Paint; Graphite



SKU	Quantity
676-3810000613351	75 per canister



Center Flow Towels



Features:

- Eliminate problems associated with folded towels
- Sanitary, one-at-a-time dispensing, reduces chance of cross-contamination
- 100% recycled, 60% post-consumer

Color: White

Ply: 2

System Format: Center Flow Roll

SKU	Length per Sheet	Width Per Sheet	Quantity
859-1420	7 7/8 in	13 1/2 in	100 per roll



Folded Hand Towels

Features:

- High-quality folded towels are thicker, stronger and more absorbent, so you use less

Color: White

Ply: 1

System Format: Multi-Fold

SKU	Length per Sheet	Width Per Sheet	Quantity
859-105	9 1/8 in	9 1/2 in	250 per pack

Perforated Roll Towels



Features:

- Easily handle even the largest clean-up jobs
- Soft to the touch with premium embossing and enhanced absorbency for home-like performance away from home

Color: White

Ply: 2

System Format: Roll

SKU	Length per Sheet	Width Per Sheet	Quantity
859-1220	11 in	8.8 in	100 per roll
859-1220-85	11 in	8.8 in	85 per roll

