

Carts	382	Pallet Trucks	384
Chains.....	362,363	Pipe Dollies	384
Cylinder Cart Parts & Accessories	382	Pulleys & Sheaves.....	367
Cylinder Carts & Trucks.....	372,373	Rope, Line & Twine	367,368
Drum Dollies & Racks	384	Shackles	369,370
Grab Hooks	365	Snap Hooks.....	365
Hand Trucks.....	371,372	Straps & Bungee Cords	370,371
Hoist Hooks.....	365	Tilt Carts	384
Hoists & Pullers.....	358,359	Trolleys.....	362
Lifting Clamps.....	366,367	Truck Wheels	382
Links	367	Utility Carts	383,384
Load Binders.....	364	Wire Rope Attachments	366
Nylon & Polyester Slings.....	370		





Puller Lever Tools

Features:

- Weatherproof
- Simple construction with fewer parts
- Hoistaloy load chain - hardened steel link type load chain
- Weatherized Weston-type automatic braking system
- One-hand operation and control - only 58 pounds of pull required for 3/4 ton model capacity
- Forged upper and lower hooks with latches standard
- Upper and lower latchlok hooks available for all capacities

No. of Falls: 1

Material: Aluminum Alloy

Operating Type: Ratchet

Lifting Height/Take-Up: 10 ft

SKU	Pull Force	Head Room	Hook Opening	Wt.
Wt. Cap.: 3/4 tons				
175-4060	58 lbf	10 3/4 in	1 1/32 in	20 lb
Wt. Cap.: 1 1/2 tons				
175-4062	89 lbf	14 1/4 in	1 1/8 in	30.9 lb



Series 602 Mini Ratchet Lever Hoists

Features:

- Plated load chain is standard
- Weston type load brake
- Rubber grip for better comfort and security
- Use in confined conditions with one hand operation
- Forged upper and lower hooks with latches standard
- Impact resistant all-steel frame, gear case, and cover
- Free chaining feature serves to quickly attach the load

Lifting Height/ Take-Up: 5 ft

Mounting: Forged Hook

SKU	Wt.
Wt. Cap.: 550 lb	
175-0210	5 lb
Wt. Cap.: 1,100 lb	
175-0215	5 lb



Series 622 Hand Chain Hoists

Features:

- Weston-type load brake requires no lubrication
- Hand wheel cover with guide slots minimizes jamming and slipping
- Forged swivel hooks with latches reduce twisting of chain and unintentional unhooking of load when chain is slack
- Standard hand chain drop is 2 feet less than lift

Lifting Height/ Take-Up: 20 ft

Mounting: Hook

Operating Type: Pull Chain

SKU	Pull Force	Wt.
Wt. Cap.: 1 tons		
175-2262	77 lbf	53.15 lb
Wt. Cap.: 2 tons		
175-2233	82 lbf	102.78 lb



Series 640 Long Handle Pullers

Features:

- Tough aluminum alloy construction and powder coat finish
- Weatherproof for outdoor service
- Simple construction with fewer parts for ease of maintenance and lower inventories
- Hoistaloy hardened steel link type load chain for strength, long wear life and flexibility
- Metric rated
- Easy, one-hand operation and control
- Forged upper and lower hooks with latches standard
- Free wheeling for fast and easy attachment to load

Lifting Height/ Take-Up: 15 ft

Head R: 10 3/4 in

Hook Opening: 1 1/32 in

Material: Aluminum Alloy

Operating Type: Pull Chain



SKU	Length	Height	Wt.
Wt. Cap.: 3/4 tons			
175-4250	0 in; 15 ft	0 in; 10 3/4 in	23 lb

Series 653 Lever Chain Hoists

Features:

- Impact resistant, stamped steel frame, gear case and cover for durability and light weight
- Hardened steel load sharing gears
- Double pawl arrangement for assured load control
- Two chain guide rollers for positive chain engagement
- Weston type braking system for positive load control and positioning
- Simple one-handed, free chaining for fast load attachment
- Minimal maintenance with no special tools required

No. of Falls: 1

Mounting: Hook

Material: Steel

Operating Type: Ratchet



SKU	Lifting Height/ Take-Up	Pull Force	Head Room	Hook Opening	Wt.
Wt. Cap.: 3/4 tons					
175-5310	5 ft	45 lbf	12 5/8 in	1 1/8 in	18.47 lb
175-5311	10 ft	45 lbf	12 5/8 in	1 1/8 in	20.72 lb
175-5313	20 ft	45 lbf	12 5/8 in	1 1/8 in	25.98 lb
Wt. Cap.: 1 1/2 tons					
175-5315	5 ft	63 lbf	14 13/16 in	1 1/4 in	30.83 lb
175-5316	10 ft	63 lbf	14 13/16 in	1 1/4 in	29.87 lb
Wt. Cap.: 3 tons					
175-5321	10 ft	77 lbf	18 11/16 in	1 9/16 in	58.57 lb

COFFING® HOISTS

LHH Model Hand Chain Hoists

Features:

- Compact, light-weight design is ideal for construction and contractor applications where portability and easy rigging are critical
- Easy to operate and designed for ease of maintenance and inspection
- Durable through hardened load chain with a housing that withstands rugged applications

Lifting Height/ Take-Up: 10 ft

No. of Falls: 1

Hook Opening: 1 1/8 in

Mounting: Hook

Material: Steel

Operating Type: Pull Chain

Head Room: 11 13/16 in



SKU	Pull Force	Wt.
Wt. Cap.: 1 tons		
176-LHH-1B-10	53 lbf	25 lb

LSB-B Model Ratchet Lever Hoists

Features:

- Compact design is portable and easy to rig
- Impact resistant stamped steel housing withstands rigorous use
- 360° rotating handle provides versatile rigging options when used in confined spaces
- Double reduction gearing and short handle with cushioned grip provide easy operation with minimal handle effort
- State-of-the-art free wheeling mechanism allows quick and easy one-handed take-up and positioning of slack chain
- Enclosed screw-and-disc type load brake stays clean and dry for positive load positioning
- Through-hardened load chain provides high strength and resists wear

No. of Falls: 1

Mounting: Hook

Material: Steel

Operating Type: Ratchet



SKU	Lifting Height/ Take-Up	Pull Force	Head Room	Handle Length
Wt. Cap.: 3/4 tons				
176-LSB-1500B-10	10 ft	46 lbf	11 5/8 in	9 1/4 in
176-LSB-1500B-15	15 ft	46 lbf	11 5/8 in	9 1/4 in
176-LSB-1500B-5	5 ft	46 lbf	11 5/8 in	9 1/4 in
Wt. Cap.: 1 1/2 tons				
176-LSB-3000B-10	10 ft	55 lbf	14 31/32 in	13 3/4 in



L5H "Premium" Series Lever Chain Hoists

Features:

- Unique, innovative "Torsion-Lok" brake system ensures positive brake engagement
- Free chain knob with color-coded red/green indicator window shows at a glance if hoist is in "load" or "free chain" position
- Wide throat, forged alloy steel load hooks slip resistant barbed tips to better retain slings
- Simple and convenient single-hand "free chaining" allows smooth, trouble-free operation in vertical or horizontal position

Lifting Height/ Take-Up: 10 ft

No. of Falls: 1

Hook Opening: 1.34 in

Frame Material: Steel



SKU	Pull Force	Handle Length
Wt. Cap.: 1 1/2 tons		
383-L5H300-10	40 lbf	14 1/2 in

P-Series Wire Pullers

Features:

- Preformed galvanized aircraft quality wire rope prevents kinks
- 4:1 design factor
- Heavy gauge plated rotating drop forged steel hooks ease operation
- Through drum anchor spools evenly while rewinding

Test & Approvals: Meets ASME B30.21

Lifting Height/ Take-Up: 15 ft

Mounting: Hook

Operating Type: Ratchet



SKU	Head R	Cable/ Wire Size	Wt.
Wt. Cap.: 2,000 lb			
383-P15D3H	18 in	3/16 in	10 1/2 lb

SHAFFER "Come Along"

HAND POWER UNITS!

Come-Along Hand Power Units

Features:

- Grab hook one end



SKU	Lifting Height/ Take-Up	Chain Size	Mounting
Wt. Cap.: 2,750 lb			
661-STANDARD	5 ft	3/8 in	(1) 3/8 in. Grab Hook
Wt. Cap.: 3,625 lb			
661-HEAVYDUTY	6 ft	7/16 in	(1) 7/16 in. Grab Hook



JET® JLP MINI-PULLERS - 1/2 TON

Features:

- Induction hardened, corrosion resistant grade 80 low wear chain
- Lever hoist will not freewheel when under load
- Weston Style Dual Pawl Brake System- Dual pawl design increases safety by splitting the load to opposite sides of the ratchet gear for greater load security
- Alloy Steel Hooks- Industrial rated hooks rotate 360 degrees for easy rigging
- Heat Treated Load Plates- Heat treated for durability, these extend the life of the hoist in industrial environments
- Grade 80 Load Chain- Grade 80 black oxide coated load chain for durability

Lifting Height/ Take-Up: 10 ft

No. of Falls: 1

Head R: 12 in

Hook Opening: 1 3/8 in

Mounting: Hook

Material: Steel

Operating Type: Ratchet

Distance Between Hooks: 11 7/8 in

SKU	Pull Force	Handle Length	Length	Wt.
Wt. Cap.: 1,102 lb				
825-187506	79 lbf	8 1/2 in	14.57 in	8.62 lb



JLP Series Lever Hoists

Features:

- All purpose lever hoist features impact resistant steel construction with durable powder coat finish
- Induction hardened, corrosion resistant grade 80 low wear chain
- Lever hoist will not freewheel when under load

No. of Falls: 1

Mounting: Hook

Material: Steel

Coating: Paint

Operating Type: Ratchet

Distance Between Hooks: 12 7/16 in

Wt. Cap.: 3/4 tons

SKU	Lifting Height/ Take-Up	Pull Force	Hook Opening	Wt.
825-187607	10 ft	32 lbf	1 7/16 in	17.55 lb
825-187608	15 ft	32 lbf	1 7/16 in	21 lb
825-187609	20 ft	32 lbf	1 7/16 in	25 lb



Distance Between Hooks: 14 in

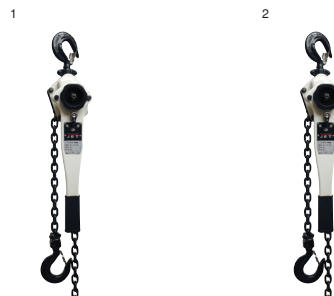
Wt. Cap.: 1 1/2 tons

SKU	Lifting Height/ Take-Up	Pull Force	Hook Opening	Wt.
825-187611	10 ft	42 lbf	1 3/4 in	29 1/2 lb
825-187612	15 ft	42 lbf	1 3/4 in	36 lb

JLP-A Series Lever Hoists

Features:

- Slip clutch design increases safety by preventing lifting or pulling damaging loads
- Grade 80 black oxide coated load chain for durability
- Safe, compact design
- Industrial-rated alloy steel hooks rotate 360 degrees for easy rigging
- Weston Style Dual Pawl Brake System- Double pawl design increases safety
- Smaller body and lightweight design for low headroom applications and use in confined areas



Features:

- Alloy Steel hooks rotate 360 degrees for easy rigging
 - Compact Design
- Wt. Cap.:** 1 1/2 tons
Handle Length: 16.06

SKU	#	Lifting Height/ Take-Up	Head R	Wt.
825-287612	1	15 ft	14.96 in	36 lb

Features:

- Compact design
 - Industrial rated hooks rotate 360 degrees for easy rigging
 - Needle bearing design promotes long hoist life with low wear reducing downtime
 - Compact design
- Wt. Cap.:** 3 tons

SKU	#	Lifting Height/ Take-Up	Load Cap.	Wt.
825-187615	1	10 ft	3 tons	48.97 lb

Features:

- Weston style Dual Pawl brake system increases safety
- Industrial rated hooks rotate 360 degrees for easy rigging
- Needle bearing design promotes long hoist life with low wear reducing downtime
- Compact design

SKU	#	Lifting Height/ Take-Up	Wt.
825-187885	2	15 ft	47 lb



L100 Hand Chain Hoists

Features:

- Lightweight, compact design for low headroom applications
- Triple-spur gears provide high efficiency with minimum effort
- Heat treated and hardened 100 grade load chain
- Patented fused disc brakes offer longer life and ease of replacement
- Sealed ball bearing supported load sheave
- Patented Fused Brake Design- Proven durability that increases safety with a lifetime replacement warranty
- Weston Style Dual Pawl Brake System- Double pawl design increases safety
- Alloy Steel Hooks- Industrial rated hooks rotate 360 degrees for easy rigging

Lifting Height/ Take-Up: 20 ft

No. of Falls: 1

Series: JL Series

Material: Steel; ZFIN



SKU	Pull Force	Head R	Model	Wt.
Wt. Cap.: 1 tons				
825-104220	64 lbf	11 5/8 in	L-100-100-20	40.55 lb
Wt. Cap.: 1 1/2 tons				
825-101620	77 lbf	13 3/4 in	L-100-150-20	50.65 lb



Power Pull Hoists

Features:

- Precision-cast aluminum alloy ratchet wheel - one piece construction
- Interlocking, precision fit, steel alloy pawls with safety spacer sleeve
- Drop-forged steel slip hooks with OSHA recommended safety latches
- Heavy gauge steel, reinforced ratchet guard
- Trouble free, "Notch-At-A-Time" letdown
- Permanent, comfortable, non-slip grip

Operation: Ratio: 15 : 1

Handle Material: Steel

Frame Material: Tempered Steel

Cable Material: Galvanized Steel

Operating Type: Ratchet

Type: Lever Puller

Wt. Cap.: 1 tons

SKU	Lifting Height/ Take-Up	Cable/ Wire Size	Wt.
453-144S-6	12 ft	3/16 in	7 3/4 lb

Wt. Cap.: 2 tons

SKU	Lifting Height/ Take-Up	Cable/ Wire Size	Wt.
453-144SB-6	6 ft	3/16 in	8 3/4 lb



LUG-ALL® Cable Ratchet Hoist-Winches



Features:

- Exclusive drum anchor - swaged ball shank terminal locks cable securely in drum and allows for full extension of cable
- Proprietary reversible handle - always a downward pull, switches positions in seconds
- Cable end has hydraulically crimped copper sleeve
- Interlocking pawl system will not slip
- Self-storing aircraft cable
- Self lubricating bearings

Mounting: Hooks

Frame Material: Aluminum Alloy

Wt. Cap.: 1/2 tons

Pull Force: 77 lbf

Cable/Wire Size: 3/16 in

Distance Between Hooks: 16 in

SKU	Lifting Height/ Take-Up	Cable Length	Wt.
447-1000-15SH	15 ft	16 ft	7 lb

Wt. Cap.: 3/4 tons

Pull Force: 65 lbf

Cable/Wire Size: 5/32 in

Distance Between Hooks: 16 in

SKU	Lifting Height/ Take-Up	Cable Length	Wt.
447-1500-25SH	25 ft	26 ft	8 1/2 lb

Wt. Cap.: 1 1/2 tons

Pull Force: 97 lbf

Cable/Wire Size: 7/32 in

SKU	Lifting Height/ Take-Up	Cable Length	Distance Between Hooks	Wt.
447-3000-10SH	10 ft	11.6 ft	16 in	9 lb
447-3000-30SH	30 ft	31.6 ft	18 in	13 3/4 lb

Wt. Cap.: 2 tons

Pull Force: 110 lbf

Cable/Wire Size: 1/4 in

Distance Between Hooks: 18 1/2 in

SKU	Lifting Height/ Take-Up	Cable Length	Wt.
447-4000-20SH	20 ft	22 ft	15 1/2 lb

The More Power Puller®

Features:

- Solid, thick iron, not aluminum components
- 27 lbs. of solid ductile and malleable iron construction

Lifting Height/ Take-Up: 20 ft

Mounting: Hooks

Frame Material: Ductile Iron



SKU	Wt. Cap.	Cable/ Wire Size	Wt.
862-2-20	2 tons	5/16 in	25 lb



PT Series Plain Trolleys

Features:

- Permanently lubricated

Test & Approvals: ANSI; ASME; OSHA

Load Cap.: 1 tons



SKU	Beam Height	Beam Width	Corner Radius	Wt.
825-252010	4 in - 19 in	3 in - 8 in	39 in	33 lb



Inco Double Loop Chains

Features:

- Do not use for overhead lifting
- The Playground Equipment Association has adopted 1/0 Inco Coil Chain as a minimum size chain for swing sets

Material: Carbon Steel

Links @ Unit of Length: 9 @ 1 ft



SKU	Trade Size	Material Dia	Inner Length	Wt.
Working Load Limit: 115 lb				
193-0750224	2	0.09 in	1.33 in	8.06 lb

Lock Link Single Loop Chains

Features:

- Do not use for overhead lifting
- Uses include sprocket wheels, overhead door chains, and general utility

Material: Carbon Steel

Finish: Galvanized

Links @ Unit of Length: 9.3 @ 1 ft

Cross Section Shape: Round



SKU	Trade Size	Material Dia	Inner Length	Wt.
Working Load Limit: 265 lb				
193-0741037	1/0	0.12 in	1.29 in	0.16 lb

Plastic Chains

Features:

- For decorative, non-load bearing use, including creating borders for flower beds, gardens, driveways, etc.
- Not for use in overhead lifting, towing, or pulling

Trade Size: 8

Material: Plastic



SKU	Material Dia	Inner Length	Inner Width	Wt.
193-0990836	0.29 in	1 1/2 in	0.4 in	0.09 lb

System 10 Grade 100 Cam-Alloy Chains

Features:

- 25% stronger than System 8
- Enables you to perform some lifts with lighter weight chain
- Heat-treated alloy steel

Trade Size: 3/8 in

Material: Alloy Steel

Links @ Unit of Length: 10 @ 1 ft

Wt. @ Length: 148 lb @ 100 ft

SKU	Length	Material Dia	Inner Length	Inner Width	Wt.
Working Load Limit: 8,800 lb					
193-0405412	500 ft	0.4 in	1.22 in	0.55 in	740 lb

Campbell®

System 3 Proof Coil Chains



Features:

- Do not use for overhead lifting
- Excellent general-purpose chain of standard commercial quality

Working Load Limit: 800 lb

Features:

- Uses include fabricating tow chains; binding or tie down chains; and logging chains

Material Dia: 0.22 in

Inner Length: 0.95 in

Inner Width: 0.34 in

Material: Carbon Steel

Links @ Unit of Length: 12.6 @ 1 ft

SKU	Test & Approvals	Trade Size	Wt.
193-0140323	Proof tested	3/16 in	0.4 lb

Features:

- Uses include fabricating tow chains; binding or tie down chains; and logging chains

Working Load Limit: 1,300 lb

Material Dia: 0.28 in

Inner Length: 1.2 in

Inner Width: 0.45 in

Material: Carbon Steel

Links @ Unit of Length: 10 @ 1 ft

SKU	Test & Approvals	Trade Size	Wt.
193-0140423	Proof tested	1/4 in	0.65 lb

Features:

- Uses include fabricating tow chains
- binding or tie down chains
- and logging chains

Material: Fiber

Finish: Galvanized

SKU	Trade Size	Length	Wt.
193-0120532	5/16 in	550 ft	0.83 lb

System 4 Binder Chains



Features:

- All chains listed may be used in accordance with the latest D.O.T. regulations
- Do not use for overhead lifting

Material: Carbon Steel

Finish: Shot Peened

Grade: 40

Hook Type: Clevis Grab

SKU	Trade Size	Quantity	Wt.
Working Load Limit: 5,400 lb			
193-0222925	3/8 in	20 per pack	34 lb

System 7 Binder Chains



Features:

- All chains listed may be used in accordance with the latest D.O.T. regulations
- Do not use for overhead lifting

Material: Alloy Hooks; Carbon Steel

Finish: Yellow Chromated

Grade: 70

End Type: Hook/Hook

Hook Type: Clevis Grab

SKU	Trade Size	Length	Wt.
Working Load Limit: 4,700 lb			
193-0513574	5/16 in	20 ft	23 lb
Working Load Limit: 6,600 lb			
193-0513665	3/8 in	20 ft	34 lb

System 7 Transport Chains



Features:

- Do not use for overhead lifting
- For use in load binding, towing, and logging

Material: Carbon Steel

Finish: Zinc Electroplate w/Yellow Chromate

Cross Section Shape: Round

Material Dia: 0.31 in

Links @ Unit of Length: 12.8 @ 1 ft

Wt. @ Length: 139 lb @ 100 ft

Working Load Limit: 3,150 lb

SKU	Trade Size	Inner Length	Inner Width	Wt.
193-0510413	1/4 in	0.94 in	0.46 in	0.93 lb

Material Dia: 0.34 in

Links @ Unit of Length: 11.9 @ 1 ft

Wt. @ Length: 114 lb @ 100 ft

Working Load Limit: 4,700 lb

SKU	Trade Size	Inner Length	Inner Width	Wt.
193-0510513	5/16 in	1.01 in	0.48 in	1.14 lb

Material Dia: 0.41 in

Links @ Unit of Length: 8.8 @ 1 ft

Wt. @ Length: 113 lb @ 100 ft

Working Load Limit: 6,600 lb

SKU	Trade Size	Inner Length	Inner Width	Wt.
193-0510613	3/8 in	1.36 in	0.57 in	1.47 lb



Grade 70 Transport Chains



Features:

- Grade 70's high strength to weight ratio is achieved by special heat treating
- It resists wear because of its exceptional hardness properties

Material: Carbon Steel

Working Load Limit: 6,600 lb

SKU	Length	Inner Length	Inner Width	Wt.
005-5041454	200 ft	1.23 in	0.62 in	1.37 lb



Grade 70 Transport Tiedown Chain Assemblies

Features:

- Grade 70 is extremely strong for its light weight and is used primarily for load binding in the transportation industry
- Grade 70's high strength to weight ratio is achieved by special heat treating
- It resists wear because of its exceptional hardness properties

Material: Carbon Steel

Finish: Yellow Dichromate



SKU	Trade Size	Length	Working Load Limit
005-5262363	3/8 in	20 ft	6,600 lb

Campbell®

Campbell® Load Binders

Features:

- For tightening chain in cargo securement

Features:

- Lever type for quicker application of load

Lifting Height/Take-Up: 4.5 in

Operating Type: Manual-Cam Action



SKU	Chain Size	Working Load Limit	Wt.
193-6203603	5/16 in; 3/8 in	5,400 lb	8.37 lb

Features:

- Lever type for quicker application of load

Chain Size/Grade: Grade 70

Lifting Height/Take-Up: 8 in

Operating Type: Manual Ratchet

SKU	Chain Size	Working Load Limit	Wt.
193-6207506	5/16 in; 3/8 in	6,600 lb	11 lb

Features:

- Ratchet type for easier adjustment of tension and a greater range of take-up

Lifting Height/Take-Up: 8 in

SKU	Chain Size	Working Load Limit	Wt.
193-6207504	5/16 in; 3/8 in	5,400 lb	9 1/2 lb
193-6207803	3/8 in; 1/2 in	9,200 lb	11.68 lb



Ratchet Binders



Features:

- Sizes for use on < to =” chain
- Binders rated for Grade 30, Grade 43, Grade 70, and some Grade 80 applications
- Binders available with cast or forged handles
- All are proof tested when assembled
- All components are forged in the USA
- For binding difficult loads such as industrial machinery and steel erection

Lifting Height/ Take-Up: 8 in

Operating Type: Ratchet

Material: Steel

SKU	Chain Size/Grade	Working Load Limit	Handle Length	Wt.
490-48365	3/8 in. Grade 30	5,400 lb	14 in	12 1/4 lb
490-48366	3/8 in. Grade 80	9,200 lb	14 in	12 1/4 lb
490-48810	5/16 in. Grade 70	5,400 lb	12 in	8 lb



Ratchet Type Load Binders



Features:

- Constructed from drop-forged, heat treated, alloy steel for increased durability
- Powder coated for corrosion resistance
- Available in working load limit capacities up to 9,200 pounds
- Binders comply with U.S. DOT regulations

Chain Size: 5/16 in; 3/8 in

Operating Type: Ratchet

Material: Forged Steel

SKU	Lifting Height/ Take-Up	Working Load Limit	Handle Length	Wt.
825-583248	8 in	5,400 lb	14 in	11 lb



by Honeywell

Ratchet Load Binder



Features:

- Ten-foot load binder with long hooks
- Plated metal ratchet with forged hooks
- Has a tensile strength of 5000 lbs
- Workload limit of 1650 lbs

Material: Metal

Finish: Plated

SKU	Working Load Limit	Length	Wt.
493-M10LH/10FTYL	1,650 lb	10 ft	4.12 lb

Campbell®

473 Series Clevis Grab Hooks

Features:

- Designed to grab and hold a chain link in place; not for lifting personnel

Chain Size: 3/8 in

Hook Opening: 1/2 in

Distance Between Points of Lift: 2 1/4 in

Material: Alloy Steel

Mounting: Jaws & Clevis Pin



SKU	Jaw Opening	Pin Size	Working Load Limit	Wt.
193-4503515	17/32 in	7/16 in	7,100 lb	1.1 lb

Quik-Alloy Grab Hooks

Features:

- Quik-Alloy grab hook
- Use of chain in grab hook may reduce breaking load of chain by up to 20 percent

Chain Size: 3/8 in

Hook Opening: 1 in

Jaw Active Depth: 1/2 in

Distance Between Points of Lift: 2 29/32 in

Material: Alloy Steel

Mounting: Jaws & Clevis Pin



SKU	Jaw Opening	Pin Size	Working Load Limit	Wt.
193-5724615	7/16 in	1/2 in	8,800 lb	1.65 lb



Big Orange Grade 43 Clevis Grab Hooks

Features:

- Forged in the US from high quality carbon steel
- Clevis hooks have heat treated pins
- Hooks are heat treated and tempered
- Finishes include self-colored, painted red, or bright zinc (ASME B633-85 Class Fe/Zn 5, Type III)
- Hooks embossed with chain grade, fractional size, and country of origin (USA)

Material: Carbon Steel

Mounting: Jaws & Clevis Pin



SKU	Chain Size	Working Load Limit	Wt.
490-M806L	3/8 in	5,400 lb	1 lb

Grade 80 Clevis Grab Hooks

Features:

- Cotter pin retained load pins
- Not recommended for overhead lifting in sling application

Material: Alloy Steel

Mounting: Jaws & Clevis Pin



SKU	Chain Size	Working Load Limit	Wt.
490-M804A	1/4 in	3,500 lb	0.4 lb
490-M805A	5/16 in	4,500 lb	0.65 lb
490-M806A	3/8 in	7,100 lb	1 lb

KLEIN TOOLS

Plunger Latch Swivel Hooks

Features:

- Drop-forged steel clevis and quick-acting plunger-style latch
- Designed to take 1/2" or lighter hand lines

Hook Opening: 5/8 in

Material: Forged Steel

Locking Type: Spring Loaded Plunger

Mounting: Swivel Eye



SKU	Eye Inner Dia	Overall Length	Working Load Limit	Wt.
409-470	1 in	5 in	750 lb	0.27 lb

Campbell®

1014 Series Latched Swivel Hoist Hooks

Features:

- All hooks are drilled for latch kits
- Designed only to retain slings and rigging attachments; must not support the load

Hook Size: 11

Hook Opening: 2 in

Bail Size: 1 1/4 in

Distance Between Points of Lift: 11 1/2 in

Working Load Limit: 11 tons

Material: Alloy Steel

Locking Type: Spring Loaded Latch

Mounting: Swivel Eye



SKU	Eye Outer Size	Inner Length	Inner Width	Overall Length	Wt.
193-39531151L	5 5/8 in	2 3/4 in	3 1/8 in	15 in	13.76 lb

Campbell®

1000-G Series Wire Rope Clips

Features:

- Blue U-bolt for identification
- Drop-forged base with heavy hex nuts
- For making eye termination assemblies.

Not for use with plastic-coated wire rope

Material: Forged Carbon Steel

Finish: Galvanized Zinc



SKU	Cable/Wire Size	Thread Size	Thread Length	Inner Length	Wt.
193-6990634	3/8 in	7/16 in	15/16 in	1 1/2 in	0.48 lb
193-6990834	1/2 in	1/2 in	1 1/8 in	2 in	0.76 lb
193-6991034	5/8 in	9/16 in	1 1/2 in	2 3/8 in	1.05 lb



Big Orange Mid-Grip Double Saddle Wire Rope Clips

Features:

- Double grip, double saddle wire rope clips allow full arc wrench swing for quicker installation, retightening or disassembly of nuts
- Mid-Grip clips cannot be installed incorrectly with the saddle not on the live rope end
- Forged from special bar quality steel with the sizes clearly marked on the saddles

Material: Forged Steel

Finish: Galvanized Zinc



SKU	Cable/Wire Size	Wt.
490-M2250	1/2 in	0.65 lb
490-M2251	5/8 in	1.13 lb

Campbell®

GX Clamps

Features:

- "GX" clamp is entirely drop forged and heat treated
- Can be used for both vertical and horizontal-to-vertical lifting
- Exclusive feature is a patented wear indicator system
- Shackle and "G" link combined into one part for fewer stress points and less chance of side loading damage

Locking Type: Load Activated

Mounting: Fixed Eye

Material: Forged Steel



SKU	Grip Cap.	Working Load Limit	Neck Depth	Wt.
193-6423000	1/16 in - 5/8 in	1/2 tons	2 3/16 in	4 lb
193-6423005	1/16 in - 3/4 in	1 tons	3 1/16 in	7.65 lb
193-6423010	1/16 in - 1 in	3 tons	3 9/16 in	17 lb

GX Replacement Cam/Pad Kits

Features:

- Replacement cam/pad kit for 1 ton clamps used for industrial plate steel lifting
- Repair kit for one-ton Merrill GX Clamp
- Kit contains: 1 Cam, 1 Pad, 1 Cam Pin, 1 T-Spring, 1 Pad Pin, 1 Rivet, 4 Sel-Locs



SKU	Working Load Limit
193-6506011	1 tons

GXL Clamps

Features:

- Available in a 1/2, 1 and 2 ton capacity
- Drop forged and heat treated components, with gripping surfaces of case hardened alloy steel
- Exclusive feature is a patented wear indicator system
- When any of cam's straight line, convex teeth are flattened between unique wear indicator grooves, it is time to change the cam
- Newly designed "Cam Engaging Lever" keeps the cam in contact with the plate

Locking Type: Load Activated

Mounting: Fixed Eye

Material: Forged Steel

Grip Cap.: 1/16 in - 7/8 in



SKU	Working Load Limit	Neck Depth	Wt.
193-6422002	2 tons	2 9/16 in	10 1/2 lb

SAC Plate Clamps

Features:

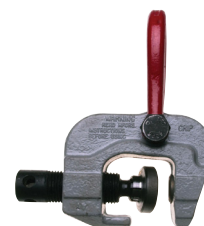
- Recommended for turning plates from horizontal to vertical as well as through a 180 degree arc
- The convex, serrated cam swivels on a ball joint so that the area of cam engagement increases as load increases
- Drop forged body and shackle
- 100% proof tested with certificate of test attached to each clamp
- * Note screw needs to be hand tight only!

Do not over tighten

Locking Type: Load Activated; Screw

Mounting: Fixed Eye

Material: Forged Steel



SKU	Grip Cap.	Working Load Limit	Neck Depth	Wt.
193-6421000	1 in	1 tons	2 1/4 in	6 1/4 lb
193-6421001	2 in	3 tons	3 3/4 in	14 1/4 lb
193-6421002	3 in	6 tons	4 1/2 in	40 lb



MagSwitch Heavy Lifters

Features:

- Dual Hook for stability
- Lock on and off
- MagSwitch Technology
- Replaceable pole shoes
- Use Single Hook for lift to shear

Test & Approvals: Asme compliant



SKU	Grip Cap.	Height	Length	Width	Wt.
Working Load Limit: 762 lb					
474-8100364	1/2 in	6 1/2 in	9.2 in	8.9 in	18 lb
Working Load Limit: 1,300 lb					
474-8100418	1 in	9.8 in	13.8 in	10.2 in	45 lb



I.D. Split Key Rings

Features:

- Made of spring tempered steel
- Perfect for hanging any tag

Material: Metal



SKU	Inner Dia
337-40082	1 in
337-40085	2 in

Campbell®

Quik-Alloy Coupling Master Links

Features:

- Quik-Alloy Coupling Master Link
- Standard material: System 10
- Loop half body through attachment, the other through chain, fit together
- Place stud assembly and alloy locking pin in link
- Drive locking pin in until snap ring engages recessed portion of pin
- Link is disassembled by simply driving locking pin out

Grade: 100

Material: Alloy Steel



SKU	Chain Size	Distance Between Points of Lift (Headroom)	Working Load Limit	Wt.
193-5779125	9/32 in	1 25/32 in	4,300 lb	0.29 lb
193-5779135	3/8 in	2 7/16 in	8,800 lb	0.55 lb



Hay Fork Pulleys

Features:

- Constructed of a one-piece shell formed of AISI 1018 steel plate
- Available in bronze bushed and roller bearing models with AISI CFC 1018 quenched and tempered center pins

Dia.: 4 1/2 in

Rated Capacity: 1 tons

Eye Size: 1.187 in

Thickness: 2 3/8 in

Mounting: Eye

Rope Size: 1 in - 1 1/4 in



SKU	Eye Width	Overall Length	Width	Wt.
323-453865	0.437 in	9 in	5 1/8 in	7 lb



Poly Lines

Features:

- Use directly from container
- Reusable plastic dispensing pail with handle keeps line dry
- Rot and mildew resistant
- Resists tangling when dispensing
- For power fishing systems to pull rope through conduit

Load Cap.: 210 lb



SKU	Length	Height	Wt.	Width
332-430	13 in	12.2 in	11 lb	13 in



Manila Ropes

Features:

- Colored yarn marker in every 3rd and/or 4th strand on sizes 1 in. Dia. and larger
- 4-Strand manila rope weigh approximately 7% heavier than 3-strand manila ropes
- Under normal service conditions, recommended working load of rope in good condition is 10% of the minimum breaking strength of new rope
- A lower working load is recommended for critical applications



SKU	Dia.	No. of Strands
103-1-1/4X100-4S	1 1/4 in	4
103-1-1/4X125-3S	1 1/4 in	3
103-1-1/4X125-4S	1 1/4 in	4
103-1/4X600-3SB	1/4 in	3
103-1X100-3S	1 in	3
103-1X100-4S	1 in	4
103-1X600-3S	1 in	3
103-3/4X100-3S	3/4 in	3
103-3/4X600-3S	3/4 in	3
103-5/8X600-3S	5/8 in	3

Features:

- Lower working load is recommended for critical applications

SKU	Dia.	Length	No. of Strands
103-1/2X600-3SB	1/2 in	600 in	3
103-1/4X1200-3SB	1/4 in	1,200 in	3
103-3/8X600-3SB	3/8 in	600 in	3



by Honeywell

Poly Ropes

Features:

- Meets all applicable OSHA, ANSI and CSA standards
- Strong and durable
- Tagline poly rope for self-retracting lifeline

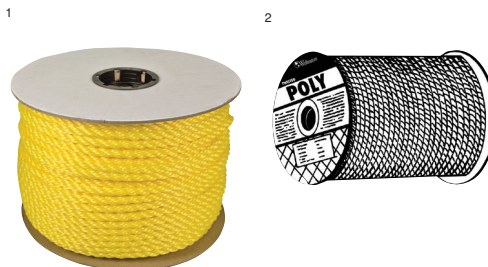
Material: Polypropylene



SKU	Length
493-193R-130	130 ft



Monofilament Twisted Poly Ropes



Features:

- A 100% monofilament polypropylene twisted rope
- Filament for this rope is extruded from virgin poly resins
- This rope is engineered in an economy weight for non-critical industrial applications

No. of Strands: 3 (unless noted)

Material: Polypropylene

SKU	#	Dia.	Length
811-350080-00600-R0278	1	1/4 in	600 ft
811-350080-01200-R0329	1	1/4 in	1,200 ft
811-350120-00600-R0283	1	3/8 in	600 ft
811-350160-00600-R0285	2	1/2 in	600 ft
811-350280-00600-R0314	1	7/8 in	600 ft

Solid Braid Ropes

Features:

- Sturdy, durable nylon braid rope
- Great for general purpose use
- Excellent for use in crafts, clothes lines, and much more



SKU	Dia.	Length	Color
Nylon			
811-710040-03000-0	1/8 in	0 in; 3,000 ft	Natural White
811-710040-03000-0	1/8 in	0 in; 3,000 ft	Natural White
Nylon (Polyamide)			
811-710080-01000-0	1/4 in	1,000 ft	White
811-710120-00500-0	3/8 in	500 ft	White
811-710160-00250-0	1/2 in	250 ft	White

Twisted Nylon Ropes

Features:

- Strongest synthetic fiber in general usage
- Excellent shock absorbing elasticity

No. of Strands: 3

Material: Nylon

Color: White



SKU	Dia.	Length	Wt.
811-530120-00600	3/8 in	600 ft	23 lb
811-530160-00600	1/2 in	600 ft	32 lb
811-530200-00600	5/8 in	600 ft	69 lb
811-530240-00600	3/4 in	600 ft	84 lb



Samson
THE STRONGEST NAME IN ROPE

Sash Cords

Material: Cotton
Color: White

Aetna™

Features:

- Balanced interlocked solid braid retains smooth, round construction

Length: 100 ft

Core Material: Synthetic

Resistance: Mildew; Rot; Wear



SKU	Size Group	Dia.	Working Load Limit	Load Cap.
650-002016001060	8	1/4 in	120 lb	800 lb
650-002020001060	10	5/16 in	203 lb	1,350 lb

Sachem™

Features:

- Solid braided construction
- Polished with weather-resistant coating

Length: 100 ft

Core Material: Synthetic

Resistance: Weather

SKU	Size Group	Dia.	Working Load Limit	Load Cap.
650-003016001060	8	1/4 in	86 lb	575 lb
650-003020001060	10	5/16 in	113 lb	750 lb
650-003024001060	12	3/8 in	150 lb	1,000 lb

Silverlake™

Features:

- Solid braided cotton composite cover with reinforced core

Length: 100 ft

Core Material: Synthetic

SKU	Size Group	Dia.	Working Load Limit	Load Cap.
650-476020001060	10	5/16 in	75 lb	500 lb
650-476024001060	12	3/8 in	90 lb	600 lb

Spot®

Features:

- High tenacity nylon core adds extra strength and reduces stretch
- Coating provides chemical, weather and heat resistance

Core Material: Nylon

Resistance: Chemical; Heat; Weather

SKU	Size Group	Dia.	Length	Working Load Limit	Load Cap.
650-001020001060	10	5/16 in	100 ft	240 lb	1,600 lb
650-001020012030	10	5/16 in	1,200 ft	240 lb	1,600 lb
650-001024001060	12	3/8 in	100 ft	300 lb	2,000 lb

Tiger™

Features:

- Solid braided cover with cotton core

Length: 100 ft

Core Material: Cotton

SKU	Size Group	Dia.	Workin Load Limit	Load Cap.
650-004016001060	8	1/4 in	30 lb	200 lb
650-004020001060	10	5/16 in	68 lb	450 lb
650-004024001060	12	3/8 in	90 lb	600 lb

General Purpose Cords



Features:

- Exclusive Samson 12-strand interlocked construction
- Stays firm and round
- Stays flexible
- Shock absorbing elasticity

Length: 100 ft

Material: Solid Braid Nylon

Resistance: Mildew; Mold; Most Chemicals; Rot

SKU	Size Group	Dia.	Working Load Limit	Load Cap.
650-019016001060	8	1/4 in	188 lb	1,250 lb
650-019020001060	10	5/16 in	210 lb	1,400 lb

Campbell®

419 Series Anchor Shackles

Features:

- Working Load Limit permanently shown on every shackle

Material: Forged Carbon Steel

Finish: Galvanized Zinc

Locking Type: Threaded Pin



SKU	Bail Size	Pin Size	Inner Length	Inner Width	Opening Size
Working Load Limit: 4,000 lb					
193-5410835	1/2 in	5/8 in	1 15/16 in	1 1/4 in	13/16 in
Working Load Limit: 6,500 lb					
193-5411035	5/8 in	3/4 in	2 7/16 in	1 9/16 in	1 1/16 in
Working Load Limit: 9,500 lb					
193-5411235	3/4 in	7/8 in	2 13/16 in	1 13/16 in	1 1/4 in
Working Load Limit: 13,000 lb					
193-5411435	7/8 in	1 in	3 1/8 in	2 1/16 in	1 7/16 in
Working Load Limit: 17,000 lb					
193-5411635	1 in	1 1/8 in	3 3/4 in	2 1/2 in	1 11/16 in

419-S Series Anchor Shackles

Material: Forged Carbon Steel

Locking Type: Threaded Pin



SKU	Bail Size	Pin Size	Inner Length	Inner Width	Opening Size
Working Load Limit: 4,000 lb					
193-5410805	1/2 in	5/8 in	1 15/16 in	1 1/4 in	13/16 in
Working Load Limit: 6,500 lb					
193-5411005	5/8 in	3/4 in	2 7/16 in	1 9/16 in	1 1/16 in
Working Load Limit: 9,500 lb					
193-5411205	3/4 in	7/8 in	2 13/16 in	1 13/16 in	1 1/4 in
Working Load Limit: 13,000 lb					
193-5411405	7/8 in	1 in	3 1/8 in	2 1/16 in	1 7/16 in
Working Load Limit: 17,000 lb					
193-5411605	1 in	1 1/8 in	3 3/4 in	2 1/2 in	1 11/16 in
Working Load Limit: 19,000 lb					
193-5411805	1 1/8 in	1 1/4 in	4 1/4 in	2 15/16 in	1 13/16 in
Working Load Limit: 24,000 lb					
193-5412005	1 1/4 in	1 3/8 in	4 1/2 in	3 1/4 in	2 in
Working Load Limit: 34,000 lb					
193-5412405	1 1/2 in	1 5/8 in	5 3/4 in	3 7/8 in	2 3/8 in
Working Load Limit: 70,000 lb					
193-5413205	2 in	2 1/4 in	7 3/4 in	5 3/4 in	3 1/4 in

Campbell®

999-G Series Anchor Shackles

Features:

- Working Load Limit permanently shown on every shackle
- Alloy-steel pin and bolt

Material: Forged Carbon Steel

Finish: Galvanized Zinc

Locking Type: Threaded Pin



SKU	Bail Size	Pin Size	Inner Length	Inner Width	Opening Size
Working Load Limit: 4,000 lb					
193-5390835	1/2 in	5/8 in	1 15/16 in	1 1/4 in	13/16 in
Working Load Limit: 6,500 lb					
193-5391035	5/8 in	3/4 in	2 7/16 in	1 9/16 in	1 1/16 in
Working Load Limit: 9,500 lb					
193-5391235	3/4 in	7/8 in	2 13/16 in	1 13/16 in	1 1/4 in
Working Load Limit: 13,000 lb					
193-5391435	7/8 in	1 in	3 1/8 in	2 1/16 in	1 7/16 in
Working Load Limit: 17,000 lb					
193-5391635	1 in	1 1/8 in	3 3/4 in	2 1/2 in	1 11/16 in
Working Load Limit: 24,000 lb					
193-5392035	1 1/4 in	1 3/8 in	4 1/2 in	3 1/4 in	2 in



Screw Pin Anchor Shackles

Features:

- All shackle bodies and pins are forged from alloy steel, heat treated and tempered
- All shackles are marked with size (inches and millimeters) and working load limit in tons
- Ultimate strength equals 5 times working load limit
- Bolt, nut & cotter shackles have thread protected ends and are 100% proof tested
- Standard industry tolerances apply
- Built-in Distortion Detectors (3/8" - 2")

Locking Type: Threaded Pin

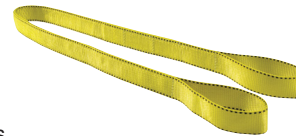


SKU	Bail Size	Working Load Limit	Material
Galvanized Zinc			
490-M650A-G*	1/2 in	6,666.67 lb	Alloy Steel
490-M653G*	7/8 in	17,000 lb	Carbon Steel
Orange Paint			
490-M650P	1/2 in	6,000 lb	Carbon Steel
490-M651P	5/8 in	9,000 lb	Carbon Steel
490-M652A-P	3/4 in	14,000 lb	Alloy Steel
490-M652P	3/4 in	13,000 lb	Carbon Steel
490-M653P	7/8 in	17,000 lb	Carbon Steel
490-M654A-P	1 in	25,000 lb	Alloy Steel
490-M654P	1 in	20,000 lb	Carbon Steel

* Galvanized per ASTM A153

LIFTEX

Pro-Edge® Web Slings



Features:

- A versatile sling for general use
- Use in choker, basket or vertical hitches

End Type: Eye & Eye

Material: Nylon

SKU	Ply
439-EE292X6N	2



Ratch-It Tie Downs

Features:

- Lightweight and easy-to-use
- Quick automatic release
- Rust resistant, cadmium plated steel hardware
- Weather resistant straps

SKU	Load Cap.	Length	Width
100-RT-115	3,000 lb	15 ft	1 in



Heavy-Duty Bungee Cords



Features:

- Industrial strength cord with corrosion resistant dichromate hooks
- 100% more rubber inside
- 3Xs the tension of regular bungee cord

End Type: Dichromate Hooks

Resistance: Corrosion; UV

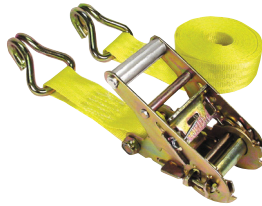
SKU	Length
130-06180	24 in
130-06182	32 in



Ratchet Tie-Down Straps

Features:

- Hi-Test webbing with full size ratchet
- Nonmarring vinyl coated hooks
- A spring loaded release mechanism prevents the ratchet from opening accidentally
- Great for pick-up and utility trailer applications



SKU	Load Cap.	Length	Width
S-Hooks			
130-05514	1,500 lb	14 ft	1 in

Features:

- High-Test webbing assures the safest, abrasion resistance straps available

SKU	Load Cap.	Length	Width
Flat Hooks			
130-04623	10,000 lb	27 ft	2 in
130-04637	15,000 lb	27 ft	3 in
130-04926	15,000 lb	30 ft	4 in
Double-J Hooks			
130-05519	5,000 lb	15 ft	1 3/4 in

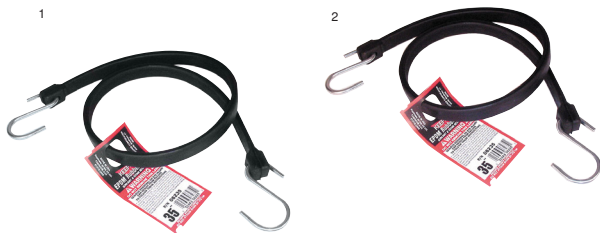
Features:

- High-Test webbing assures the safest, abrasion resistance straps available

SKU	Load Cap.	Length	Width
Double-J Hooks			
130-04622	10,000 lb	27 ft	2 in



Rubber Straps



Features:

- Compounded EPDM rubber will not crack, rot or lose rebound qualities
- It is low temperature resistant - nonbrittle to -40°F
- Strong hooks will not bend, break or rust under normal use

End Type: Steel Hooks

Resistance: Ozone; Sunlight; Weather; Corrosive

SKU	#	Length
130-06224	1	24 in
130-06235	2	35 in



Hold-Zit™ Straps



Features:

- Standard equipment on many trucks and trailers, they hold down tarps and other equipment
- Made in the USA

End Type: Hook/Hook

Material: Rubber

SKU	Description
615-R7-22B	22" Hold-Zit Rubber Strap
615-R7-31B	31" Hold-Zit Rubber Strap



Convertible Hand Trucks

Caster Dia: 5 in

Caster Width: 1 1/4 in

Features:

- Converts from vertical to horizontal in one folding motion
- Beveled toe plate

Wheel Type: Pneumatic, B.B.

Caster Type: Solid Rubber, Sleeve

Base Plate: 8 x 18 in

Platform Length: 38 in

Platform Width: 12 in

Height: 51 3/4 in

Handle Type: Twin Pin

Material: Aluminum



SKU	Wheel Dia	Wheel Width	Load Cap.	Wt.
310-45136	10 in	4 in	500 lb; 650 lb	40 lb

Features:

- Wheel guards

Wheel Type: Ace-Tuf®, B.B.

Caster Type: Blended Poly

Base Plate: 8 x 14 in

Platform Length: 36 in

Platform Width: 12 in

Height: 46 in - 61 in

Handle Type: Flow Back

Material: Steel

SKU	Wheel Dia	Wheel Width	Load Cap.	Wt.
310-47180	10 in	2 3/4 in	600 lb	42 lb



D-Handle Hand Trucks

Features:

- Holds a maximum capacity of 800 pounds
- Stands on its own

Load Cap.: 800 lb

Wheel Width: 4 in

Wheel Type: Pneumatic

Height: 50 in

Width: 19 in

Handle Type: D-Handle

Material: Steel



SKU	Wheel Dia	Platform Length	Platform Width	Wt.
310-30019	10 in	14 in	7 1/2 in	34 lb

Dual Handle Hand Trucks

Features:

- Accessory brackets

Load Cap.: 600 lb

Wheel Width: 2 3/4 in

Wheel Type: Solid Rubber, B.B.

Platform Length: 8 in

Platform Width: 14 in

Handle Type: Dual

Material: Steel



SKU	Wheel Dia	Height	Width	Wt.
310-47132	10 in	45 1/2 in	20 1/2 in	32 lb

Heavy Duty Hand Trucks

Features:

- Accessory brackets
- Beveled toe plate

Wheel Dia: 10 in

Wheel Width: 2 3/4 in

Wheel Type: Solid Rubber, B.B.

Platform Length: 8 in

Platform Width: 14 in

Width: 19 in

Material: Steel



SKU	#	Load Cap.	Height	Handle Type	Wt.
310-33007	1	700 lb	48 in	Flow Back	42 lb
310-33045	2	600 lb	51 in	P-Handle	42 lb

4B's Bracket Company

Cylinder Holders



Features:

- The rubber gasket on the inside of the holder, eliminates all concern of friction and noise
- Turns with your fingers tighten or loosen the wing nut, which holds the tank firmly in place, or lets the bolt swing out of your way
- The yoke is welded to the cylinder holder and is fastened to the bracket with two (2) 3/4" long and 5/16" bolts, lock washers and nuts
- The holder is hinged and swings back giving you access to the tank much quicker and easier than chains and makeshift methods
- Strong enough to support connecting pipes and valves
- Makes it easy to remove and replace

SKU	Diam; Diam	Wt.
344-TH-106	6 1/2 in - 7 1/4 in	3.4 lb
344-TH-107	7 1/4 in - 8 in	3.6 lb
344-TH-108	8 in - 8 3/4 in	3.8 lb
344-TH-109	9 in - 9 3/4 in	4 lb

Industrial Safety Welding Oilfield Construction



Anthony Cylinder Trucks

No. of Wheels: 2



Features:

- Heavy-duty reinforced frame
- Lifting Eye
- Fire wall

Wheel Type: Pneumatic

Handle Type: Wrap-around

SKU	#	No. of Cylinders	Material	Platform Material
021-94FW-16	1	2	Steel	Steel
021-94FW-16S	1	2	Steel	Steel

Features:

- Heavy-duty reinforced frame
- Lifting Eye
- Fire wall
- Cylinder clamps

Wheel Dia: 16 in

Wheel Type: Solid Rubber

Load Cap.: 800 lb

Acetylene Cylinder (Max): 9.500 in

Oxygen Cylinder (Max): 9.500 in

Handle Type: Wrap-around

SKU	#	Wheel Width	Material	Platform Material
021-84FW-16	2	4 in	Steel	Steel

Features:

- Heavy-duty reinforced frame
- Solid rubber wheels

Wheel Dia: 10 in

Wheel Type: Solid Rubber/Plastic Rim

Base Width: 12 in

Base Length: 9 in

Load Cap.: 500 lb

Acetylene Cylinder (Max): 12 in

Oxygen Cylinder (Max): 9.500 in

Bracket Chain Height: 30 in

Handle Type: Wrap-around

SKU	#	Wheel Width	No. of Cylinders	Material	Platform Material
021-54FRA	3	2 3/4 in	1	Steel	Steel
021-54PN	3	2 3/4 in	1	Steel	Steel

Features:

- Ideal where casual welding requirements may apply
- Reinforced frame

Wheel Dia: 10 in

Wheel Type: Solid Rubber (BB)

SKU	#	Wheel Width	Wt.
021-39V	3	1 3/4 in	28 lb

Cryogenic Use Single-Cylinder Carts

Features:

- Heavy-duty style frame
- Ratchet style hook



Pneumatic

Base Width: 22 in

Base Length: 25 in

Caster Dia: 4 in

Caster Width: 2 in

Caster Type: Rubber

Load Cap.: 900 lb

Height: 46 in

Width: 28 in

SKU	Wheel Dia	Wheel Width	Material	Platform Material	Wt.
021-86U-4	10 in	2 3/4 in	Steel	Steel	85 lb
021-87U-4	16 in	4 in	Steel	Steel	92 lb

SKU
021-87U-4S

Dual-Cylinder Carts with Double-Reinforced Frames

Features:

- Double reinforced frame
- Braising rod holders

Wheel Dia: 7 in

Wheel Width: 2 in

Wheel Type: Solid Rubber/Plastic Rim

No. of Cylinders: 2

No. of Handles: 1

No. of Wheels: 2

Material: Steel

Platform Material: Steel



Handle Type: "T" Style

Base Width: 19 in

Base Length: 9 in

Load Cap.: 120 lb

Height: 44 in

SKU	Acetylene Cylinder (Max)	Oxygen Cylinder (Max)	Bracket Chain Height	Width	Wt.
021-39	8.500 in	8 in	20 in	21 in	22 lb

Handle Type: Single Pole

Base Width: 17 in

Base Length: 8 in

Load Cap.: 100 lb

Height: 41 in

SKU	Acetylene Cylinder (Max)	Oxygen Cylinder (Max)	Bracket Chain Height	Width	Wt.
021-38	8 in	7 in	15 in	19 in	17 lb



Dual-Cylinder Delivery Carts

Features:

- Heavy-duty reinforced frame
- Wheel Dia: 10 in
- No. of Cylinders: 2
- Load Cap.: 500 lb
- Acetylene Cylinder (Max): 10 in
- Oxygen Cylinder (Max): 9 in
- No. of Handles: 1
- Height: 48 in
- Handle Type: Dual Handle
- No. of Wheels: 2
- Material: Steel



SKU	Wheel Width	Base Width	Base Length	Width	Wt.
Pneumatic					
021-55PN3B	4 in	12 in	9 in	14 in	38 lb
Solid Rubber/Plastic Rim					
021-55-3B	2 3/4 in	20 in	10 in	19 in	49 lb

Heavy-Duty Frame Cylinder Carts

Features:

- Heavy-duty frame cart
- Wheel Dia: 10 in
- Wheel Width: 2 in
- Wheel Type: Rubber/Steel Rim
- Base Width: 20 in
- Base Length: 22 in
- Caster Type: Rubber
- No. of Cylinders: 12
- Load Cap.: 400 lb
- No. of Handles: 1
- Handle Type: Wrap-around
- No. of Wheels: 4
- Material: Steel



SKU	Caster Dia	Caster Width	Height	Width	Wt.
021-6124	4 in	2 in	42 in	20 in	44 lb

Heavy-Duty Frame Dual-Cylinder Carts

Features:

- Heavy-duty reinforced frame
- Lifting Eye
- Fire wall
- Cylinder clamps
- Wheel Dia: 16 in
- Wheel Width: 4 in
- Wheel Type: Solid Rubber
- No. of Cylinders: 2
- Load Cap.: 800 lb
- Acetylene Cylinder (Max): 9.500 in
- Oxygen Cylinder (Max): 9.500 in
- Handle Type: Wrap-around
- No. of Wheels: 2
- Material: Steel
- Platform Material: Steel



SKU	Base Width	Base Length	Height	Width	Wt.
021-84LFW-16S	19 in	10 in	62 in	34 in	163 lb

Heavy-Duty Reinforced Frame Dual-Cylinder Carts

Features:

- Heavy-duty reinforced frame
- Lifting Eye
- Fire wall
- Wheel Dia: 16 in
- Wheel Width: 4 in
- Base Width: 24 in
- Base Length: 12 in
- No. of Cylinders: 2
- Load Cap.: 900 lb
- Acetylene Cylinder (Max): 15 in
- Oxygen Cylinder (Max): 9.500 in
- Handle Type: Wrap-around
- No. of Wheels: 2



SKU	Wheel Type	Height	Width	Wt.
021-94LFW16	Pneumatic	65 in	37 in	155 lb
021-94LFW16S	Solid Rubber	65 in	37 in	178 lb



High-Rail Frame Dual-Cylinder Carts

Features:

- High-rail style frame
- Ergonomic handle
- Cylinder clamp

No. of Cylinders: 2

Handle Type: Ergonomic

No. of Wheels: 2

Material: Steel

Height: 42 in

Base Width: 19 in

Base Length: 9 in

Load Cap.: 400 lb

Acetylene Cylinder (Max): 8.500 in

Oxygen Cylinder (Max): 8 in



SKU	#	Wheel Dia	Wheel Width	Width	Wt.
Wheel Type: Solid Rubber/Steel Rim					
021-41-10	1	10 in	2 in	20 in	34 lb

Height: 46 in

Base Width: 19 in

Base Length: 10 in

Load Cap.: 600 lb

Acetylene Cylinder (Max): 9.500 in

Oxygen Cylinder (Max): 9.500 in

SKU	#	Wheel Dia	Wheel Width	Width	Wt.
Wheel Type: Pneumatic					
021-85-16	2	16 in	4 in	29 in	49 lb
Wheel Type: Solid Rubber					
021-85-14	2	14 in	2 in	25 in	45 lb

Height: 47 in

Base Width: 23 in

Base Length: 12 in

Load Cap.: 600 lb

Acetylene Cylinder (Max): 13.500 in

Oxygen Cylinder (Max): 9.500 in

SKU	#	Wheel Dia	Wheel Width	Width	Wt.
Wheel Type: Solid Rubber					
021-24-14	1	14 in	2 in	23 in	53 lb
Wheel Type: Steel					
021-24-24	1	24 in	2 in	23 in	64 lb

Low-Rail Frame Dual-Cylinder Carts

Features:

- Low-rail style frame
- Ergonomic handle
- Safety chain

No. of Cylinders: 2

Handle Type: Ergonomic

No. of Wheels: 2

Material: Steel

Base Width: 24 1/2 in

Base Length: 12 in

Load Cap.: 600 lb

Acetylene Cylinder (Max): 15 in

Oxygen Cylinder (Max): 9.500 in

Bracket Chain Height: 30 in

Width: 24 in

Height: 47 in



SKU	#	Wheel Dia	Wheel Width	No. of Handles	Wt.
Wheel Type: Pneumatic					
021-2-16	1	16 in	2 in	1	56 lb
Wheel Type: Steel					
021-2-24	1	24 in	2 in	1	63 lb
Wheel Type: Solid Rubber/Steel Rim					
021-2-14	1	14 in	2 in	1	53 lb

Base Width: 19 in

Base Length: 9 in

Load Cap.: 400 lb

Acetylene Cylinder (Max): 8.500 in

Oxygen Cylinder (Max): 8 in

Bracket Chain Height: 20 in

Width: 20 in

Height: 42 in

SKU	#	Wheel Dia	Wheel Width	No. of Handles	Wt.
Wheel Type: Solid Rubber/Steel Rim					
021-4-10	1	10 in	2 in	1	34 lb
021-4-14	1	14 in	2 in	1	44 lb

Base Width: 19 in

Base Length: 10 in

Acetylene Cylinder (Max): 9.500 in

Oxygen Cylinder (Max): 9.500 in

Width: 28 in

Height: 46 in

SKU	#	Wheel Dia	Wheel Width	Load Cap.	No. of Handles	Wt.
Wheel Type: Pneumatic						
021-8-16	2	16 in	4 in	800 lb	2	51 lb
Wheel Type: Rubber/Steel Rim						
021-8-14	2	14 in	2 in	600 lb	1	48 lb



Medium Heavy-Duty Dual-Cylinder Carts

Features:

- Heavy-duty reinforced frame
- Solid rubber wheels
- Wheel Dia:** 10 in
- Wheel Width:** 2 3/4 in
- Wheel Type:** Solid Rubber/Plastic Rim
- Base Width:** 19 in
- Base Length:** 10 in
- No. of Cylinders:** 2
- Acetylene Cylinder (Max):** 9,500 in
- Oxygen Cylinder (Max):** 9,500 in
- Bracket Chain Height:** 24 in
- No. of Handles:** 1
- Handle Type:** Dual Handle
- No. of Wheels:** 2
- Material:** Steel



SKU	Load Cap.	Height	Width	Wt.
021-81	500 lb	48 in	24 in	52 lb

Retractable Single-Cylinder Medical Carts

Features:

- Heavy-duty cart
- Retractable unit
- Wheel Dia:** 10 in
- Wheel Width:** 2 in
- Wheel Type:** Rubber/Steel Rim
- Base Width:** 10 in
- Base Length:** 10 in
- Caster Type:** Rubber
- No. of Cylinders:** 1
- Load Cap.:** 400 lb
- Oxygen Cylinder (Max):** 9,500 in
- No. of Handles:** 1
- Handle Type:** Wrap-around
- No. of Wheels:** 2
- Material:** Steel



SKU	Caster Dia	Caster Width	Height	Width	Wt.
021-6114	4 in	2 in	46 in	12 in	30 lb

Single Cylinder Carts

Features:

- Heavy-duty frame
- Wheel Width:** 2 in
- Wheel Type:** Rubber/Plastic Rim
- No. of Cylinders:** 1
- No. of Handles:** 1
- Height:** 41 in
- Handle Type:** Single Pole
- No. of Wheels:** 2
- Material:** Steel



SKU	#	Wheel Dia	Base Width	Base Length	Width	Wt.
Load Cap.: 100 lb						
021-6105	1	6 in	8 in	8 in	8 in	6 lb
Load Cap.: 200 lb						
021-6108	2	8 in	10 in	10 in	10 in	12 lb

Single Cylinder Delivery Carts

Features:

- Heavy-duty reinforced frame
- Solid rubber wheels
- Height:** 48 in
- No. of Wheels:** 2
- Wheel Dia:** 10 in
- Wheel Width:** 2 3/4 in
- Wheel Type:** Solid Rubber/Plastic Rim
- Acetylene Cylinder (Max):** 12 in
- Oxygen Cylinder (Max):** 9,500 in
- Bracket Chain Height:** 30 in
- Material:** Steel
- Platform Material:** Steel
- Load Cap.:** 500 lb



SKU	#	Base Width	Base Length	Width	Wt.
021-54	1	12 in	9 in	18 in	38 lb

- Wheel Type:** Solid Rubber, B.B.
- Material:** Rubber

SKU	#	Width	Depth	Wt.
021-54-14	2	17 in	20 in	43 lb



Single-Cylinder Heavy-Duty Medical Cart

Features:

- Heavy-duty cart
- Wheel Dia:** 10 in
- Wheel Width:** 2 in
- Wheel Type:** Rubber/Steel Rim
- Base Width:** 10 in
- No. of Cylinders:** 1
- Load Cap.:** 400 lb
- Oxygen Cylinder (Max):** 9.500 in
- Handle Type:** Wrap-around
- Material:** Steel



SKU	Base Length	Height	Width	Wt.
021-6110	10 in	46 in	12 in	23 lb

Small Dual-Cylinder Carts with Tool Tray

Features:

- Double reinforced frame
- Braising rod holders
- Tool Tray
- Wheel Dia:** 7 in
- Wheel Width:** 2 in
- Wheel Type:** Solid Rubber/Plastic Rim
- No. of Cylinders:** 2
- Load Cap.:** 100 lb
- Acetylene Cylinder (Max):** 8 in
- Oxygen Cylinder (Max):** 7 in
- Bracket Chain Height:** 15 in
- Material:** Steel



SKU	Base Width	Base Length	Height	Width	Wt.
021-38B	17 in	8 in	41 in	19 in	19 lb



MG Model Trucks

Features:

- Cylinder is securely held by a spring loaded hold chain which is encased in a plastic tube
- Wheel Dia:** 8 in
- Wheel Width:** 1 3/4 in
- Wheel Type:** Semi-Pneumatic, Conductive, B.B.
- Caster Dia:** 3 in
- Caster Width:** 13/16 in
- Caster Type:** Rubber
- For Cylinder Size:** 330 cu ft
- Bracket Chain Height:** 32 in
- Height:** 45 1/2 in



SKU	Platform Length	Platform Width	Width	Wt.
338-MG-470C-40	14 in	6 in	19 1/2 in	30 lb

Series 100 Trucks

Features:

- Strong and compact in design having excellent balance and rollability
 - All models have a cylinder hold chain and hose supports
 - Concealed angle legs prevent load from resting on wheels when truck is stationary
 - Handles small to medium cylinders
 - Recommended for small shops and garages having hard surface floors
 - Series 100 trucks are strong and compact in design
- Handle Type:** Uni-Handle



Bracket Chain Height: 15 in
Height: 39 1/2 in
Platform Length: 15 in
Platform Width: 7 in
Width: 18 1/2 in

SKU	Wheel Dia	Wheel Width	Acetylene Cylinder (Max)	Oxygen Cylinder (Max)	Wt.
Wheel Type: Semi-Pneumatic, B.B.					
338-106-71	6 in	1 1/2 in	8 in	7 in	13 lb
Wheel Type: Semi-Pneumatic, Plain					
338-106-21	6 in	1 1/2 in	8 in	7 in	12 lb

Height: 45 in
Bracket Chain Height: 22 3/4 in
Platform Length: 17 in
Platform Width: 8 in
Width: 21 1/2 in

SKU	Wheel Dia	Wheel Width	Acetylene Cylinder (Max)	Oxygen Cylinder (Max)	Wt.
Wheel Type: Semi-Pneumatic, B.B.					
338-108-70	8 in	1 3/4 in	9 1/4 in	7-1/2 in	21 lb
Wheel Type: Semi-Pneumatic, Plain					
338-108-24	7 in	1 1/2 in	9 1/4 in	7-1/2 in	21 lb



Series 140 Trucks

Features:

- Welded on tool boxes are standard on all three sizes of trucks in this series
- Hose hooks and welding rod holder tubes provide greater utility
- Handles small, medium and large cylinders
- Deluxe Models have refinements and features such as handle bars with hand grips for better control and stability when moving the loaded unit

Oxygen Cylinder (Max): 9-1/4 in
Acetylene Cylinder (Max): 10 1/2 in
Bracket Chain Height: 22 3/4 in
Platform Length: 20 in
Platform Width: 9 in
Height: 45 1/2 in
Handle Type: Deluxe Uni-Handle



SKU	Wheel Dia	Wheel Width	Width	Wt.
Wheel Type: Pneumatic				
338-142-16	10 in	3 1/2 in	29 1/2 in	32 1/2 lb
Wheel Type: Solid Rubber, B.B.				
338-142-60	10 in	2 3/4 in	28 in	35 1/2 lb
338-142-86	10 in	2 in	26 1/2 in	165.5 lb

Oxygen Cylinder (Max): 7-1/2 in
Acetylene Cylinder (Max): 9 in
Bracket Chain Height: 22 3/4 in
Platform Length: 17 in
Platform Width: 8 in
Height: 45 1/2 in
Handle Type: Deluxe Uni-Handle

SKU	Wheel Dia	Wheel Width	Width	Wt.
Wheel Type: Semi-Pneumatic, B.B.				
338-141-70	8 in	1 1/4 in	21 1/2 in	24 lb

Oxygen Cylinder (Max): 7 in
Acetylene Cylinder (Max): 8 in
Bracket Chain Height: 15 in
Platform Length: 15 in
Platform Width: 7 in
Height: 38 1/2 in
Handle Type: Deluxe Uni-Handle

SKU	Wheel Dia	Wheel Width	Width	Wt.
Wheel Type: Semi-Pneumatic, B.B.				
338-140-71	6 in	1 1/2 in	18 1/2 in	17 1/2 lb

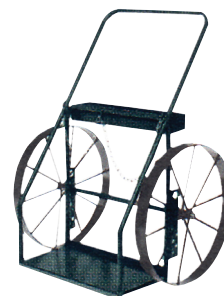
SKU
338-142-K19

Series 300 Trucks

Features:

- Most popular and versatile large cylinder truck
- Continuous handle gives truck frame more rigidity
- Safer with no sharp projections and provides a push bar or hand grip for two when necessary
- High floor clearance when moving over rough surfaces or cluttered areas
- Angle legs remove load from the wheel when truck is stationary

Acetylene Cylinder (Max): 13 in
Oxygen Cylinder (Max): 9-1/4 in
Bracket Chain Height: 27 in
Platform Length: 24 in
Platform Width: 13 in



SKU	Wheel Dia	Wheel Width	Height	Width	Wt.
Wheel Type: Pneumatic, B.B.					
338-316-72	16 in	4 in	45 3/4 in	35 in	56 lb
Wheel Type: Semi-Pneumatic, B.B.					
338-314-27	14 in	1 3/4 in	45 3/4 in	31 in	51 lb
Wheel Type: Semi-Pneumatic, Plain					
338-312-25	12 in	1 3/4 in	45 3/4 in	31 in	46 lb
Wheel Type: Steel, B.B.					
338-324-32	24 in	2 in	45 3/4 in	31 1/2 in	62 1/2 lb

Series 600 Trucks

Features:

- Available in two and four wheel models and is designed to handle heavy CRYOGENIC LIQUID GAS CYLINDERS
- This larger sized frame and repositioned front wheels which allow secure handling without excessive force
- The 650A50-51 is designed to handle larger 20" -26" diameter liquid gas cylinders
- This model equipped with the QUAD Hook will handle a wide variety of large gas cylinders
- Newly designed single hook adjusts from 50" to 60" in height which makes it more versatile for handling a variety of cylinder types
- All available with pneumatic or mold on rubber tires

Wheel Width: 2 1/2 in

Wheel Type: Pneumatic B.B. (Front); Solid Rubber, B.B. (Rear)

Load Cap.: 870 lb

Height: 59 in

Wheel Dia: 10 in; 16 in



SKU	Wheel Width	Width	Wt.
338-60072-64	4 in	28 in	83 lb

Wheel Type: Mold-On Rubber

Caster Dia: 6 in

Caster Type: Mold-On Rubber

Load Cap.: 950 lb

Height: 59 in

Wheel Dia: 12 in

SKU	Caster Width	Width	Wt.
338-65050-51	2 in	24 1/2 in	108.5 lb
338-650A50-51	2 in	26 3/4 in	109 lb



Series 700 Trucks

Features:

- Provides a wide range of utility for handling oxygen, acetylene, nitrogen, helium, argon and other gas cylinders
 - Handles medium to large cylinders
- Wheel Dia:** 10 in

Bracket Chain Height: 27 in
Height: 48 in
Platform Length: 14 in
Platform Width: 7 in
Width: 21 in



SKU	Wheel Width	Acetylene Cylinder (Max)	Oxygen Cylinder (Max)	Wt.
Wheel Type: Solid Rubber, B.B.				
338-701-86	2 in	9 1/4 in	9-1/4 in	32 lb
338-701SC-16	2 in	All Gas Cylinders		44 lb

Acetylene Cylinder (Max): 9 1/4 in
Oxygen Cylinder (Max): 9-1/4 in
Bracket Chain Height: 19 in; 34 in
Platform Length: 17 in
Platform Width: 9 in
Width: 22 1/2 in
Height: 49 1/2 in

SKU	Wheel Width	Width	Wt.
Wheel Type: Pneumatic, B.B.			
338-742-16	3 1/2 in	22 1/2 in	39 1/2 lb
Wheel Type: Solid Rubber, B.B.			
338-786-40	2 in	21 1/8 in	51 lb

Acetylene Cylinder (Max): 9 1/4 in
Oxygen Cylinder (Max): 9-1/4 in
Bracket Chain Height: 19 in; 34 in
Platform Length: 17 in
Platform Width: 9 in
Height: 49 1/2 in

SKU	Wheel Width	Wt.
Wheel Type: Solid Rubber, B.B.		
338-742-86	2 in	40 1/2 lb



Series 830 Trucks

Features:

- Series 830 is a new design to accommodate a large oxygen cylinder in the back, and a large acetylene cylinder in the front
- This narrow design allows for better maneuverability in narrow aisles where a normal side-by-side cylinder truck cannot go
- SO-2 bolt on tool box is available as an option

Wheel Width: 2 in
Wheel Type: Solid Rubber, B.B.
Acetylene Cylinder (Max): 12 1/2 in
Oxygen Cylinder (Max): 10-1/2 in
Bracket Chain Height: 19 in; 34 in
Base Plate: 11 x 11 in, in back; 8 x 12 in, in front
Width: 20 in
Handle Type: Continuous



SKU	Wheel Dia	Height	Wt.
338-830-86	10 in	49 in	32 1/4 lb

Series 900-950 Trucks

Features:

- Series 900 Harper Trucks are identical to Series 940 except they are equipped with a center tow ring for slow speed towing for on job site transportation
- Comes with a lock top tool box
- Series 950 Extra Heavy Duty Cylinder Truck is the only model designed to be lifted and placed in a construction type application
- Containment rings and center "V" on the base plate, coupled with the "Sur-Lok" Cylinder holding device securely carries cylinders on the ground or during hoisting into place
- Handle large cylinders

Width: 36 1/2 in
Wheel Dia: 21 in
Wheel Width: 4 in
Wheel Type: Pneumatic, Roller
Acetylene Cylinder (Max): 13 1/2 in
Oxygen Cylinder (Max): 9-1/4 in
Bracket Chain Height: 24 in



SKU	Platform Length	Platform Width	Height	Wt.
338-950-34	24 in	13 in	60 in	155 lb

Stationary Cylinder Holders

Features:

- Stationary cylinder holder and wall brackets safely secure cylinders to wall
- Meets insurance requirements and eliminates the hazard of loose cylinders
- Equipped with "Chain-Lok" take up feature

Acetylene Cylinder (Max): 10 1/2 in
Oxygen Cylinder (Max): 9-1/4 in
Mounting: Wall



SKU	Width	Wt.
338-WB2-20	22 in	8 lb



400 Series Carts

Features:

- Perma-Clams are an optional feature on this series
- Will accommodate a large oxygen and large acetylene

Platform Width: 24 in

Platform Depth: 13 in

No. of Cylinders: 2

Load Cap.: 500 lb

Acetylene Cylinder (Max): 12 1/2 in

Oxygen Cylinder (Max): 9 1/2 in

Material: Steel



SKU	Includes	Height	Width	Wt.
339-401-14		46 in	31 in	55 lb
339-401-14FW*	Firewall	62 in	35 in	108 lb

*Meets and exceeds OSHA 1910.253

550 Series Carts

Load Cap.: 1,000 lb

Acetylene Cylinder (Max): 12 1/2 in

Oxygen Cylinder (Max): 9 1/2 in

Platform Width: 24 in

Platform Depth: 13 in



SKU	Width	Material	Platform Material	Wt.
339-552-16	35 in	Steel	Steel	77 lb
339-552-16FW*	35 in	Steel	Steel	130 lb

*Meets and exceeds OSHA 1910.253

Load Cap.: 560 lb; 700 lb

Acetylene Cylinder (Max): 12 in

Oxygen Cylinder (Max): 9 1/2 in

Platform Width: 24 in

Platform Depth: 13 in

SKU	Width	Material	Platform Material	Wt.
339-552-16FW-101611	35 in	Steel	Steel	131 lb

Load Cap.: 1,800 lb

Acetylene Cylinder (Max): 12 1/2 in

Oxygen Cylinder (Max): 9 1/2 in

Platform Width: 24 in

Platform Depth: 13 in

SKU	Width	Material	Platform Material	Wt.
339-554-30FW	40 in	Steel	Steel	175 lb

SKU
339-16FW-SM

750 Series Carts

Features:

- Perfect for cylinder delivery
- Heavy-duty hand trucks constructed of a tubing with a floor plate

Capacities: (1) Cylinder

Wheel Type: Semi-Pneumatic

No. of Cylinders: 1

Load Cap.: 500 lb

Height: 49 in

Material: Steel



SKU	Platform Width	Platform Depth	Wt.
339-750-10	14 in	6 in	33 lb

800 Series Carts

Features:

- Designed to carry oxygen and acetylene cylinders with ease
- Providing flat-free service

Capacities: (2) Cylinders

No. of Wheels: 2

Material: Steel



Acetylene Cylinder (Max): 8 1/2 in

Oxygen Cylinder (Max): 8 in

Load Cap.: 200 lb

SKU	Platform Width	Platform Depth	Width	Wt.
339-810-6	20 in	8 in	22 in	21 lb

Acetylene Cylinder (Max): 8 in

Oxygen Cylinder (Max): 9 1/2 in

Load Cap.: 500 lb

SKU	Platform Width	Platform Depth	Width	Wt.
339-820-10	19 in	10 in	27 in	32 lb

Acetylene Cylinder (Max): 9 1/2 in

Oxygen Cylinder (Max): 9 1/2 in

Load Cap.: 500 lb

SKU	Platform Width	Platform Depth	Width	Wt.
339-860-14	21 in	12 in	21 in	43 lb

Acetylene Cylinder (Max): 9 1/2 in

Oxygen Cylinder (Max): 9 1/2 in

Load Cap.: 900 lb

SKU	Platform Width	Platform Depth	Width	Wt.
339-861-16	21 in	12 in	27 in	46 lb

Acetylene Cylinder (Max): 12 1/2 in

Oxygen Cylinder (Max): 9 1/2 in

Load Cap.: 500 lb

SKU	Platform Width	Platform Depth	Width	Wt.
339-870-14	24 in	13 in	30 in	46 lb

Acetylene Cylinder (Max): 12 1/2 in

Oxygen Cylinder (Max): 9 1/2 in

Load Cap.: 500 lb

SKU	Platform Width	Platform Depth	Width	Wt.
339-873-24	24 in	13 in	33 in	66 lb



900 Series Carts

Features:

- Light to medium duty carts
- Available with different wheels and an optional tool tray
- The "S" represents steel ball bearing and semi-pneumatic wheels

Capacities: (2) Cylinders
Wheel Type: Semi-Pneumatic; Steel
No. of Cylinders: 2
Acetylene Cylinder (Max): 8 1/2 in
Handle Type: Bent
No. of Wheels: 2
Material: Steel

Wheel Dia: 8 in
Wheel Width: 1 3/4 in
Oxygen Cylinder (Max): 8 in
Cylinder Diam: 8 1/2 in
Height: 45 in
Load Cap.: 300 lb

SKU	Platform Width	Platform Depth	Width	Wt.
339-935-8S	18 in	8 in	21 in	27 lb

Wheel Dia: 10 in
Wheel Width: 2 3/4 in
Oxygen Cylinder (Max): 9 1/2 in
Cylinder Diam: 9 1/2 in
Height: 47 in
Load Cap.: 1,000 lb

SKU	Platform Width	Platform Depth	Width	Wt.
339-950-10	20 in	9 in	26 in	43 lb

Cylinder Cart Stands

Features:

- An easily portable stand
- The B-Tote carries a single B cylinder
- It combines a removable handle with a stable base to secure your cylinder

Capacities: (1) Cylinder
No. of Cylinders: 1
No. of Handles: 1
Height: 27 in
Handle Type: Bent
Material: Steel
Cylinder Diam: 7 in

SKU	Platform Width	Platform Depth	Width	Wt.
339-B-Tote	9 in	9 in	9 in	8 lb



Cylinder Racks

Features:

- Built on the same frame as the 250, the 250-2 brings a double trailwheel to the table
- Makes transporting a single high-pressure cylinder even easier

Wheel Dia: 8 in
Capacities: (1) Cylinder
Wheel Type: Semi-Pneumatic
Caster Dia: 3 in
Caster Width: 3/4 in
Caster Type: Swivel
No. of Cylinders: 1
Load Cap.: 900 lb
Height: 49 in
Material: Steel

SKU	Platform Width	Platform Depth	Width	Wt.
339-250-2	14 in	6 in	18 in	29 lb



Industrial Series Carts

Features:

- This cart is excellent for use on docks and delivery trucks
- The 780-10 can also be used as a two-wheeler for delivery of hard goods (electrodes, etc.)
- This cart is the same width as the cylinder for easy maneuverability through doorways and truck isles
- Easy maneuverability through doorways and truck isles

Capacities: (1) Cylinder
Caster Type: Swivel
No. of Cylinders: 1
Material: Steel

Cylinder Cap.: 1 Liquid Cylinder
Wheel Type: Pneumatic
Caster Dia: 6 in
Caster Width: 2 in
Load Cap.: 2,000 lb
Height: 63 in
Width: 20 in
Handle Type: Bar Handle
No. of Wheels: 3

SKU	Cylinder Diam	Length	Depth	Wt.
339-LCT-12-6	20 in	40 in	40 in	119 lb

Cylinder Cap.: (1) Liquid Cylinder
Wheel Type: Phenolic; Soft Rubber
Caster Dia: 6 in
Caster Width: 2 in
Load Cap.: 1,500 lb; 2,400 lb
Height: 48 in
Width: 29 in
No. of Wheels: 2
Used With: Liquid Gas Cylinders

SKU	Cylinder Diam	Length	Depth	Wt.
339-EZ-LOAD-4L	20 in	29 in	28 in; 29 in	79 lb





Medical Series Carts

- Features:**
- Made for easy maneuverability
 - All constructed of tubular steel
- Wheel Dia:** 8 in
Wheel Width: 1 3/4 in
Capacities: (1) Cylinder
Wheel Type: Semi-Pneumatic
No. of Cylinders: 1
Load Cap.: 300 lb
No. of Wheels: 2
Material: Steel



SKU	Platform Width	Platform Depth	Height	Wt.
339-250-0	6 in	6 in	49 in	22 lb

Pallet Series

- Features:**
- Can be moved with a forklift from all four sides
 - Easily adapted to your existing truck fleet, therefore there is no need to purchase new truck bodies
 - Allows the distributor to transport supplies directly to the job site in a lockable container
 - Saf-T-Cart will also build pallets to meet your specifications
- Cylinder Cap.:** (16) Hi-Pressure Cylinders
Capacities: (16) Cylinders
No. of Cylinders: 16
Material: Steel
Platform Material: Steel



SKU	Base Width	Platform Depth	Height	Wt.
339-STP-16	42 in	39 in	39 in	240 lb

Running Gear Series Carts

- Features:**
- Designed to carry a variety of mini migs, inverters and plasma machines
- Capacities:** (1) Cylinder
Wheel Type: Polyolefin
Caster Type: Swivel
No. of Cylinders: 1
Load Cap.: 1,200 lb
Handle Type: U-Handle
Steering Type: Swivel Casters
No. of Wheels: 2
Material: Steel



SKU	Cylinder Diam	Platform Width	Platform Depth	Wt.
339-MM-8	9 1/2 in	13 in	28 in	48 lb



Cylinder Wall Brackets

- Features:**
- Reinforced bracket
- Material:** Steel



SKU	Handle Type
021-WB100	Strap
021-WB200C	Chain



Truck Wheels

- Features:**
- Pneumatic 4-ply cylinder replacement truck wheels
 - Loads up to 350 pounds
- Bearing Type:** Ball
Bore Size: 5/8 in
For Model: 310-16; 701-16; 742-16; 704-16; 142-16; 701SC-16
Tire Type: Pneumatic 4-Ply
Wheel Dia: 10 in



SKU	Face Size	Hub Width	Load Cap.
338-WH-16	3 1/2 in	2 1/4 in	350 lb



Low Wheel Carts

- Features:**
- Works great on soft terrain
 - Sturdy, structural foam construction won't rust, dent, chip or peel
 - All-plastic, seamless pan design resists leaking and cracking
- Capacity Vol.:** 7.5 cu ft
Load Cap.: 300 lb
Material: High-Density Polyethylene



SKU	Height	Width	Length	Wt.
640-5640-BLA	28 1/4 in	33 3/4 in	58 in	45.8 lb



Pallet Truck

Features:

- Overload protection ball valve prevents lifting loads past maximum capacity
- Top-Stroke release valve prevents cylinder extension beyond maximum height
- One-piece cast iron pump has a built-in valve that lowers the material in a controlled decent
- Poly-over-aluminum, 7" x 2" steer wheels ensure contact with uneven floors and feature double-sealed lubricated bearings

Tread Material: Polyester

No. of Wheels: 6

Color: Black/White



SKU	Wheel Dia	Load Cap.	Height	Length
825-140175	7 in	6,000 lb	27 in	48 in

Service Carts

Features:

- Service Cart with 500-lb capacity

Tread Material: Rubber

Caster Dia: 5 in

Load Cap.: 500 lb

Platform Depth: 3 1/2 in

Material: Steel



SKU	Height	Width	Length	Wt.
825-140024	32 in	24 in	36 in	48 lb



Heavy-Duty Flat Shelf Utility Carts

Features:

- Virtually maintenance free
- Customize-it fittings built in: add your own wire spools, rolls, etc.
- Drawer, hooks, power strip, pneumatic casters, & bin accessories available
- Easy-reach tool hooks and storage area enhances & productivity & organization
- Ergonomic handle design improves control & worker safety

Caster Dia: 5 in

Caster Type: 2-Fixed; 2-Swivel; TPR

Load Cap.: 500 lb

Handle Type: Ergonomic

Material: Plastic



SKU	Height	Width	Length
640-4525-BLA	38 1/8 in	25 1/4 in	44 in

Heavy-Duty Lipped Shelves Utility Carts

Features:

- Virtually maintenance free
- 2 3/4" deep top shelf securely holds contents
- Drawer, hooks, power strip, & bin accessories available
- Easy-reach tool/accessory hooks and storage area enhances productivity & organization
- Optimum service life: sturdy structural foam construction won't rust, dent, chip, or splinter
- Universal uprights makes assembly quick and easy

Width: 25 1/4 in

Length: 54 in

Handle Type: Ergonomic

Material: Plastic



SKU	Caster Dia	Load Cap.	Height
640-4546-10-BLA	8 in	750 lb	43 1/8 in

Heavy-Duty Utility Carts

Features:

- Sturdy structural foam construction won't rust, dent, chip or peel
- Ergonomically designed push handle provides optimum hand placement and push height improving control and worker safety
- Molded-in storage compartments, holsters, hooks, and notches

Caster Dia: 4 in

Caster Type: Swivel

Load Cap.: 300 lb

No. of Shelves: 2

No. of Wheels: 4

Features:

- Lightweight and maneuverable
- Rounded corners protect walls and furniture

SKU	Height	Width	Length
640-9T67	31 1/4 in	24 in	40 in

Material: High-Density Structural Resin

SKU	Height	Width	Length
640-9T66	0 in; 31 1/4 in	0 in; 16 in	0 in; 34 in





Utility Carts

Features:

- Sturdy structural foam construction won't rust, dent, chip, or peel
- Rounded corners protect walls and furniture
- Lightweight and maneuverable

Caster Dia: 5 in

Caster Type: 2 Fixed; 2 Swivel

Load Cap.: 500 lb



SKU	Width	Length	Color	Wt.
640-4500-88-BEIG	17 1/4 in	38 1/2 in	Beige	22 lb
640-4500-88-BLA	17 7/8 in	39 1/4 in	Black	30.4 lb
640-4520-88-BG	25 7/8 in	45 1/4 in	Beige	41.4 lb
640-4520-88-BLA	25 7/8 in	45 1/4 in	Black	41.4 lb

Forkliftable Tilt Trucks

Features:

- Constant force design allows for controlled dumping by one person
- Easy to handle and maneuver through commercial doorways and onto elevators
- Inset wheels on 1/2 cu. yd. (.4 m³) and 1 cu. yd. (.8 m³) models protect walls, fixtures and patrons

Capacity Vol.: 1 yd³

Load Cap.: 1,250 lb

Material: Medium Density Polyethylene



SKU	Height	Width	Length
640-1315-42-BLA	33 1/2 in	43 3/4 in	72 1/4 in

Tilt Trucks

Features:

- Easy to handle and maneuver through commercial doorways and onto elevators
- Angled front end is designed for convenient dumping
- Inset wheels on 1/2 cu. yd. (.4 m³) and 1 cu. yd. (.8 m³) models protect walls, fixtures and patrons
- Smooth surface is easy to clean and resists pitting and corroding
- Optional domed lids available



Capacity Vol.: 1/2 yd³

Height: 38 5/8 in

SKU	Load Cap.	Wt.	Width	Length
640-1304-BLA	450 lb	59 lb	28 in	56 3/4 in
640-1305-BLA	850 lb	77.2 lb	28 in	60 1/2 in

Capacity Vol.: 1 yd³

Height: 43 3/4 in

SKU	Load Cap.	Wt.	Width	Length
640-1314-BLA	850 lb	91 lb	33 1/2 in	72 1/4 in
640-1315-BLA	1,250 lb	99 lb	33 1/2 in	72 1/4 in



J Series Pallet Trucks

Features:

- Wheel bearings are double sealed and lifetime lubricated
- High-quality welded steel construction with a durable powder coat finish
- Easy-to-use with single hand operation, fingertip controls and 180 degree turning radius

Platform Width: 27 in

Load Cap.: 5,000 lb

Height: 45 1/8 in



SKU	Platform Length	Length	Wt.
825-151009	48 in	63 in; 63 in (closed)	203.5 lb



Drum Handling Trucks

Features:

- Lifting toes create a cradle for easy break-over
- Handles drums from 21 to 43 inches high
- Replaceable chime hook and lifting toes ensure a long product life
- Spring-loaded swing axle keeps truck in upright position when not in use

Wheel Dia: 10 in

Wheel Type: Mold-On Rubber



SKU	Load Cap.	Height	Width	Wt.
338-7889	1,200 lb	62 in	23 in	81 lb



Drum Cradles

Features:

- Move and drain 55-gallon steel drums
- Designed for one man loading

Width: 23 in

Material: Steel

Load Cap.: 800 lb



SKU	Wheel Dia	Wheel Width	Wheel Type	Height	Wt.
310-40157				19 3/4 in	36 lb
310-40158	4 in	1 in	Blended Poly	20 1/2 in	40 lb



Grasshopper Pipe Dollies

Features:

- Special sliding chain block design accommodates long and short loads
- Carries up to 20" diameter pipe, tool boxes, fittings and valves

Load Cap.: 2,000 lb



SKU	Height	Width	Length	Wt.
432-780351	40 in	35 in	12 ft	155 lb



All-Cast Jacks

Features:

- The top winch-connector clamp is supplied as standard with all Hi-Lift jacks, the component gives the jack its multi-functionality, allowing the jack to be used in winching and clamping modes
- Additionally, each jack is fitted with a safety shear bolt which prevents the jack from being used on loads greater than the 7000 lbs.

Lifting Height/ Take-Up: 38.63 in

Material: Cast Alloy Steel



SKU	Wt. Cap.	Height
355-HL-485	4,660 lb	50 3/4 in



Ratchet Jacks

Features:

- Most versatile, general purpose jacks available
 - Rugged construction permits safe, efficient jacking
 - Steel level bars are ordered separately
- Material:** Forged Alloy Steel



SKU	Base Length x Width	Wt. Cap.	Height [Min]	Stroke Length
720-85A	7 3/8 x 5 in	5 tons	17	10 in
720-1017	8 3/4 x 6 in	10 tons	17 1/4	9 1/2 in

RJ Series Mechanical Ratchet Jacks

Features:

- Double-lever sockets for jacking in close quarters
 - Drop-forged, alloy steel, heat-treated components
 - Large base insures a firm foundation
 - Plated springs to resist corrosion
 - Supports full rated capacity on the toe or the cap
- Material:** Alloy Steel/Aluminum



SKU	Height	Stroke Length	Base Length x Width
720-RJA1022	0 in; 21 5/8 in	12 in	10 1/4 x 6 1/2 in

Superjack Mechanical Jacks

Features:

- Ball bearings for smooth operation and low-handle effort
 - High capacity
 - Holds load indefinitely without creep down
 - Positive stop
- Material:** Aluminum



SKU	Stroke Length	Base Length x Width
720-A2510C	5 in	5 1/2 x 5 1/2 in

ENERPAC

RC Series Single Acting Cylinders

Features:

- Collar threads, plunger threads and base mounting holes enable easy fixturing (on most models)
 - CR400 Coupler and Dust Cap Included on All Models
 - High strength alloy steel for durability
- Operating Pressure:** 10,000 psi
Activating Fluid: Oil
Includes: CR-400 Coupler; Dust Cap



Capacity Wt: 5 tons

Cylinder Effective Area: 0.99 sq. in.

Bore Dia: 1.13 in

Plunger Dia: 1 in

SKU	Stroke Length	Oil Cap.	Collapsed Height	Extended Height
277-RC-50 [†]	0.63 in	0.62 cu in	1.63 in	2 1/4 in

Capacity Wt: 10 tons

Cylinder Effective Area: 2.24 sq. in.

Bore Dia: 1.69 in

Plunger Dia: 1 1/2 in

SKU	Stroke Length	Oil Cap.	Collapsed Height	Extended Height	Plunger Internal Thread
277-RC-101 [†]	1 in	2.24 cu in	3.53 in	4.53 in	#10 - 24UN
277-RC-102 [†]	2.13 in	4.75 cu in	4.78 in	6.91 in	1 in - 8
277-RC-104 [†]	4.13 in	9.23 cu in	6 3/4 in	10.88 in	1 in - 8
277-RC-106 [‡]	6.13 in	13.7 cu in	9 3/4 in	15.88 in	1 in - 8

Capacity Wt: 15 tons

Cylinder Effective Area: 3.14 sq. in.

Bore Dia: 2 in

Plunger Dia: 1.63 in

SKU	Stroke Length	Oil Cap.	Collapsed Height	Extended Height	Plunger Internal Thread
277-RC-154 [†]	4 in	12.57 cu in	7.88 in	11.88 in	1 in - 8

Capacity Wt: 25 tons

Cylinder Effective Area: 5.16 sq. in.

Bore Dia: 2.56 in

Plunger Dia: 2 1/4 in

SKU	Stroke Length	Oil Cap.	Collapsed Height	Extended Height	Plunger Internal Thread
277-RC-252 [†]	2 in	10.31 cu in	6 1/2 in	8 1/2 in	1 1/2 in - 16
277-RC-256 [†]	6 1/4 in	32.23 cu in	10 3/4 in	17 in	1 1/2 in - 16

Capacity Wt: 50 tons

Cylinder Effective Area: 11.04 sq. in.

Bore Dia: 3 3/4 in

Plunger Dia: 3.13 in

SKU	Stroke Length	Oil Cap.	Collapsed Height	Extended Height
277-RC-506 [†]	6 1/4 in	69.03 cu in	11.13 in	17.38 in

- Baked enamel finish for increased corrosion resistance
- † • Available as a Set with Gauge, Couplers, Hose and Pump
- Baked enamel finish for increased corrosion resistance
- ‡ • Available as a Set with Gauge, Couplers, Hose and Pump
- Baked enamel

ENERPAC

RCH Series Hollow Plunger Cylinders

Features:

- Baked enamel finish for corrosion resistance
- Collar threads for easy fixturing
- Hollow plunger design allows for both pull and push forces
- Nickel-plated floating center tube on models over 20 tons increases product life

Operating Pressure: 10,000 psi

Activating Fluid: Oil

Includes: CR-400 Coupler



Capacity Wt.: 20 tons
Cylinder Effective Area: 4.73 sq. in.
Bore Dia: 2.88 in
Plunger Dia: 2.13 in
Includes: Dust Cap

SKU	Stroke Length	Oil Cap.	Collapsed Height	Extended Height	Plunger Internal Thread
277-RCH-202	2 in	9.46 cu in	6.38 in	8.38 in	1 9/16 in - 16UN

Capacity Wt.: 30 tons
Cylinder Effective Area: 7.22 sq. in.
Bore Dia: 3 1/2 in
Plunger Dia: 2 1/2 in

SKU	Stroke Length	Oil Cap.	Collapsed Height	Extended Height	Plunger Internal Thread
277-RCH-302	2 1/2 in	18.05 cu in	7.03 in	9.53 in	1 13/16 in - 16UN
277-RCH-306	6.13 in	44.23 cu in	13 in	19.13 in	1 13/16 in - 16UN

Capacity Wt.: 60 tons
Cylinder Effective Area: 12.73 sq. in.
Bore Dia: 4.88 in
Plunger Dia: 3.63 in
Includes: Dust Cap

SKU	Stroke Length	Oil Cap.	Collapsed Height	Extended Height	Plunger Internal Thread
277-RCH-606	6 in	76.41 cu in	12 3/4 in	18 3/4 in	2 3/4 in - 16UN

RCS Series Low Height Cylinders

Features:

- Baked enamel finish for increased corrosion resistance
- Grooved plunger end with threaded holes for mounting tilt saddles
- Lightweight, low profile design for use in confined areas
- Plunger wiper reduces contamination

Operating Pressure: 10,000 psi

Activating Fluid: Oil

Includes: CR-400 coupler & Dust Cap



Capacity Wt.: 20 tons
Bore Dia: 2.38 in
Plunger Dia: 2 in

SKU	Stroke Length	Cylinder Effective Area	Oil Cap.	Collapsed Height	Extended Height
277-RCS-201	1 3/4 in	4.43 sq. in.	7.75 cu in	3.88 in	5.63 in

Capacity Wt.: 30 tons
Bore Dia: 2.88 in
Plunger Dia: 2.62 in

SKU	Stroke Length	Cylinder Effective Area	Oil Cap.	Collapsed Height	Extended Height
277-RCS-302	2.44 in	6.49 sq. in.	15.82 cu in	4.63 in	7.06 in

RSM Series Flat Jac® Cylinders

Features:

- Compact, flat design for applications where other cylinders will not fit
- Grooved plunger requires no saddle
- Hard chrome plated high-quality steel plunger
- Mounting holes for easy fixturing

Operating Pressure: 10,000 psi

Activating Fluid: Oil

Includes: CR-400 coupler & Dust Cap



Capacity Wt.: 10 tons
Bore Dia: 1.69 in
Plunger Dia: 1 1/2 in

SKU	Stroke Length	Cylinder Effective Area	Oil Cap.	Collapsed Height	Extended Height
277-RSM-100	0.44 in	2.24 sq. in.	0.98 cu in	1.69 in	2.13 in

Capacity Wt.: 20 tons
Bore Dia: 2.38 in
Plunger Dia: 2 in

SKU	Stroke Length	Cylinder Effective Area	Oil Cap.	Collapsed Height	Extended Height
277-RSM-200	0.44 in	4.43 sq. in.	1.94 cu in	2.03 in	2.47 in

Capacity Wt.: 30 tons
Bore Dia: 2.88 in
Plunger Dia: 2 1/2 in

SKU	Stroke Length	Cylinder Effective Area	Oil Cap.	Collapsed Height	Extended Height
277-RSM-300	1/2 in	6.49 sq. in.	3.25 cu in	2.31 in	2.81 in

Capacity Wt.: 50 tons
Bore Dia: 3 1/2 in
Plunger Dia: 2 3/4 in

SKU	Stroke Length	Cylinder Effective Area	Oil Cap.	Collapsed Height	Extended Height
277-RSM-500	0.63 in	9.62 sq. in.	6.01 cu in	2.63 in	3 1/4 in

Air/Hydraulic Pumps

Features:

- Rugged construction - built for long life and easy service
 - Three-position treadle provides cylinder advance, hold and retract operation
 - PA-133 operates in all positions for increased versatility in Use and mounting
 - Base mounting slots provided on PA-133
- Used With:** Single-Acting Cylinder
Operating Pressure: 10,000 psi
Valve Function: Adv/Hold/Ret
Sound Level: 85 dB
Air Pressure Range: 60 psi - 120 psi
Air Consumption: 9 SCFM



SKU	Useable Oil Cap. [Max]	Flow
277-PA-133	36 cu in	8 cu. in./min; 40 cu. in./min

ENERPAC

Composite Hand Pumps

Features:

- Lightweight, compact design
- Handle lock for easy carrying
- Lower handle effort minimizes operator fatigue
- Internal pressure relief valve for overload protection
- Large oil capacities to power a wide variety of cylinders and tools
- Durable glass-filled nylon reservoir and nylon encapsulated aluminum pump base



Operating Pressure @ Volume/1Stroke: 10,000 psi @ 0 cu in
No. of Speeds: 1

SKU	Useable Oil Cap. [Max]	Oil Displacement Per Stroke (2nd Stage)	Maximum Handle Effort
277-P-141	20 cu in	0.055 cu in	72 lb
277-P-391	55 cu in	0.151 cu in	85 lb

No. of Speeds: 2

SKU	Useable Oil Cap. [Max]	Oil Displacement Per Stroke (1st Stage)	Oil Displacement Per Stroke (2nd Stage)	Maximum Handle Effort
Operating Pressure @ Volume/1Stroke: 200 psi @ 0 cu in				
277-P-142	20 cu in	0.221 cu in	0.055 cu in	78 lb
Operating Pressure @ Volume/1Stroke: 200 psi @ 1 cu in				
277-P-392	55 cu in	0.687 cu in	0.151 cu in	93 lb

Steel Hand Pumps

Features:

- Large oil capacity to power a wide variety of cylinders or tools
- 4-way valving on the P-84 and P-464 for operation of double-acting cylinders
- Internal pressure relief valve for overload protection
- Easily convert to foot power with the PC-10 kit



SKU	No. of Speeds	Useable Oil Cap [Max]	Maximum Handle Effort
277-P-39	1	40 cu in	111 lb
277-P-80	2	134 cu in	104 lb

Turbo II Air/Hydraulic Pumps

Features:

- High efficiency fully serviceable cast aluminum air motor for increased life and reduced air consumption
- Operating air pressure 25 - 125 psi enables pump to start at low pressure
- Return-to-tank port for use in remote valve applications
- Internal pressure relief valve provides overload protection



Used With: Single-Acting Cylinder

Air Pressure Range: 25 psi

Air Consumption: 12 SCFM

Sound Level: 76 dB

Operating Pressure: 10,000 psi

SKU	Useable Oil Cap. [Max]	Flow
277-PATG-1102N	127 cu in	10 cu. in./min; 60 cu. in./min

Ultra-High Pressure Hand Pumps

Features:

- Two-speed operation allows for faster fill, reducing cycle times for many testing applications
- Large release knob for improved control of pressure release



No. of Speeds: 2

Operating Pressure @ Volume/1Stroke: 200 psi @ 1 cu in; 40,000 psi @ 0 cu in

Includes: 41-366, 3/8 in. NPTF Adaptor

SKU	Useable Oil Cap. [Max]	Oil Displacement Per Stroke (1st Stage)	Oil Displacement Per Stroke (2nd Stage)	Maximum Handle Effort
277-P-2282	60 cu in	0.99 cu in	0.037 cu in	106 lb

700-Series High Pressure Hydraulic Hoses

Material: Thermo-plastic

Operating Pressure: 10,000 psi



SKU	Length	Inside Dia
277-H-7210	0 in; 10 ft	1/4 in
277-HC-7206	6 ft	1/4 in

900-Series High Pressure Hydraulic Hoses

Features:

- 2:1 design factor
- Crimped-on rubber strain relief for improved life and durability
- Rubber coated with 2 layers of steel wire braids
- Flexible, with little "memory", is the best choice for long hose runs
- Designed to comply with Material Handling Institute IJ-100 Hose specification



Inside Dia: 1/4 in

Material: Rubber

SKU	Operating Pressure	Connections	Length
277-H-9206	10,000 psi	3/8 in NPTF	6 ft
277-HC-9206	10,000 psi	3/8 in NPTF x CH-604	6 ft
277-HC-9210	10,000 psi	3/8 in NPTF x CH-604	10 ft

Hydraulic Spreaders

Features:

- For use in very confined work areas
- Single-acting, spring return

Operating Pressure: 10,000 psi

Tip Clearance: 0.5 in

Cylinder Effective Area: 1 sq. in.



SKU	Load Cap.	Spreading Cap.	Oil Cap.
277-WR-5	1 tons	3.7 in	0.61 cu in

ENERPAC

Enerpac® Hydraulic Couplers

Features:

- Standard equipment on most Enerpac cylinders
- Recommended for use on all Enerpac pumps and cylinders where space and porting permits
- Include "2-in-1" dust cap for use on male and female coupler halves
- Facilitate quick connection of hydraulic lines

Style: High-Flow

Operating Pressure: 10,000 psi



SKU	Flow	Thread Size	Length
277-C-604	2,500 cu. in./min	3/8 in (NPTF)	3.26 in
277-CR-400	2,500 cu. in./min	3/8 in (NPTF)	2.87 in

SUMNER

Flange Pins

Features:

- Quick installing pins work as convenient reference points to level flange for tack and weld out - no tools needed
- Features acme threads for maximum clamping power and hardened steel for long lasting use



SKU	Hole Diam
432-780430	5/8 in; 1 5/8 in



Hydraulic Cable Cutters

Features:

- These portable, self-contained hydraulic cable cutters are precision engineered tools designed to give a clean cut with minimum effort
- Used by contractors, rigging lofts and elevator repairmen, and are recommended by wire rope manufactures worldwide
- All three models will operate underwater



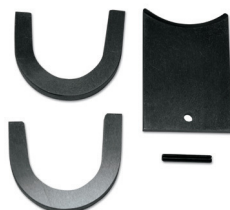
SKU	Cutting Cap.	Wt.
505-P-1125	1 1/8 in	33 lb
505-C-1750	1 3/4 in	65 lb

Hydrashear® Model C Replacement Parts

Features:

- Hydrashear® replacement parts

SKU	Wt.
505-C4	1/4 lb
505-C62	1 1/2 lb



ENERPAC

Hydraulic Oils

Features:

- Maximum pump volumetric efficiency
- Maximum internal heat transfer
- Prevents pump cavitation
- Additives prevent rust, oxidation and sludge
- High viscosity index
- Maximum film protective lubricity

Pour Point: -25 °F



SKU	Capacity Vol.
277-HF-101	1 gal



12-Cylinder Medical Stands

Features:

- Heavy-duty frame
- Platform Material:** Steel
Material: Steel
No. of Cylinders: 12



SKU	Load Cap.	Height	Base Length	Base Width
021-6120	400 lb	20 in	22 in	15 in

6-Cylinder Medical Stands

Features:

- Heavy-duty frame
- Material:** Steel
No. of Cylinders: 6



SKU	Load Cap.	Height	Base Length	Base Width
021-6060	300 lb	18 1/2 in	15 in	12 in

Single Cylinder Medical Stands

Features:

- Heavy-duty stand
- Material:** Steel
Color: Green
No. of Cylinders: 1
No. of Handles: 1



SKU	Load Cap.	Height	Base Length	Base Width
021-610FE	200 lb	12 in	18 in	18 in

SUMNER

Adjustable Stand Head

Features:

- Fast adjustment for easy pipe positioning
- Clean and simple design avoids welder interference

Head Type: Vee

Material: Carbon Steel

SKU	Load Cap.	Pipe Diam
432-780518	2,000 lb	1/8 in - 24 in

Adjustable Stands

Features:

- Roller adjustment from either side
- Fast adjustment for easy pipe positioning
- Clean and simple design avoids welder interference

No. of Wheels: 2

Frame Material: Steel

Material: Steel

Color: Yellow

SKU	Load Cap.	Pipe Diam; Pipe Diam
432-780370	2,000 lb	1/2 in - 36 in
432-780443	2,000 lb	1/2 in - 36 in

Adjustable Wheels

Features:

- Carbon steel wheel head
- Adjustable wheels
- Use for welding of pipe and rounds

No. of Wheels: 2

SKU	Load Cap.	Pipe Diam
432-780514	2,000 lb	1 1/4 in - 24 in



Big V Jack

Features:

- 1-3/4" acme adjustment screw
- 12" vee
- 40" pipe maximum
- Fast action adjustment handle
- Heavy duty 1" square tubing
- Several optional large vee head styles

Head Type: Vee



SKU	Load Cap.	Pipe Diam	Height	Base Width
432-780260	2,500 lb	4 in - 36 in	29 1/2 in - 35 1/2 in; 41 in	29 1/2 in

FAB SAF Jacks

Features:

- Fold-A-Jack with vee head
- Adjustable height

SKU	Load Cap.	Pipe Diam	Height
432-780395	3,500 lb	24 in	32 in - 52 in



Fold-A-Jack® Style Hi Jacks

Features:

- Quick action lock washer for fast height positioning
- Patented Fall Guard™ feature allows 1" safety zone around lock washer
- Set screw can lock jack head to stand for transportation - no loose pieces
- Jack independently load tested for quality assurance

Height: 28 in - 49 in

SKU	Load Cap.	Pipe Diam	Head Type
432-781300	2,500 lb	1/8 in - 36 in	Vee
432-781301	2,000 lb	1 1/4 in - 24 in	Steel Roller Head



Fold-A-Jack® Style Lo Jacks

Features:

- Folds up for storage ease
- 1" square tube base construction
- Quick action lock washer for fast height positioning
- Patented Fall Guard™ feature allows 1" safety zone around lock washer
- Set screw can lock jack head to stand for transportation - no loose pieces
- Jack independently load tested for quality assurance

Head Type: Vee

SKU	Load Cap.	Height
432-781310	2,500 lb	21 in - 36 in



Heavy-Duty Style Hi Jacks

Features:

- Quick action lock washer for fast height positioning
- Patented Fall Guard™ feature allows 1" safety zone around lock washer
- Set screw can lock jack head to stand for transportation - no loose pieces
- Jack independently load tested for quality assurance

Height: 28 in - 49 in

SKU	Load Cap.	Pipe Diam	Head Type
432-780375	2,500 lb	1/8 in - 36 in	Vee
432-780376	2,000 lb	1 1/4 in - 24 in	Steel Roller Head



SUMNER

Heavy-Duty Style Lo Jacks

Features:

- Quick action lock washer for fast height positioning
- Patented Fall Guard™ feature allows 1" safety zone around lock washer
- Set screw can lock jack head to stand for transportation - no loose pieces
- Jack independently load tested for quality assurance

Head Type: Vee



SKU	Load Cap.	Pipe Diam	Height
432-780385	2,500 lb	1/8 in - 36 in	21 in - 36 in

Hi Adjust-A-Roll Stands

Features:

- Roller adjustment from either side
- Fast adjustment for easy pipe positioning
- Clean and simple design avoids welder interference
- Wheel tried for true pipe rotation
- Bronze bearing to eliminate arcing
- Break to lock loads for lay-out or fit-up

Head Type: Steel Wheels



SKU	Load Cap.	Pipe Diam
432-780365	2,000 lb	1/2 in - 36 in

Hi Boy Stands

Features:

- Specifically designed for tight pipe installation, such as in mechanical rooms or tunnels
- Legs fold up for convenient storage in job boxes or truck beds
- Quick action lock washer for fast height positioning
- Designed for pipe installation in tight areas
- Folds for easy transport
- Convenient carrying handle
- Quick action lock washer for fast height positioning
- Patented Fall Guard™ feature allows 1 in safety zone around lock washer
- Large, convenient adjustment handle
- Set screw for double margin of safety
- Set screw can lock jack head to stand for transportation - no loose pieces



SKU	Load Cap.	Height	Base Width
432-783250	1,000 lb	39 in - 72 in	38 in

Max-Jax™ Pipe Stand Optional Caster Kits

Features:

- Quick-action braking system
- For use with Max-Jax™ Pipe Stands

Includes: Five Casters

SKU	Roller Dia
432-781464	8 in



Max-Jax™ Pipe Stands



Features:

- The large 12" vee head and heavy duty four-legged design offers the welder an extra margin of safety
- In the shop or on the job, moving long lengths of pipe is a snap with Max-Jax™
- The ideal fabricator stand
- Jack independently load tested for quality assurance
- Large, convenient adjustment handle
- Optional casters enable pipe to be easily wheeled around in the shop or on the job
- Several optional large vee head styles
- Stand can be used with casters or independently

SKU	#	Load Cap.	Pipe Diam	Roller Dia
432-781403	1	2,500 lb	4 in - 40 in	8 in
432-781460	2	2,500 lb	36 in	8 in

Pro Jack® Style Hi Jacks

Features:

- Formed steel legs
 - Strut tension palate for superior lateral support
 - Quick action lock washer for fast height positioning
 - Patented Fall Guard™ feature allows 1" safety zone around lock washer
 - Set screw can lock jack head to stand for transportation - no loose pieces
 - Jack independently load tested for quality assurance
- Load Cap.:** 2,000 lb
Height: 28 in - 49 in



SKU	Pipe Diam	Head Type
432-780471	1/8 in - 36 in	Vee
432-780472	1/8 in - 10 in	Roller

Pro Roll™ Stands

Features:

- Roller adjustment from either side
 - Fast adjustment for easy pipe positioning
 - Clean and simple design avoids welder interference
 - Wheel tried for true pipe rotation
 - Bronze bearing to eliminate arcing
 - Break to lock loads for lay-out or fit-up
 - Leveling on either side of stand
- Head Type:** Steel Wheels



SKU	Load Cap.	Pipe Diam	Height
432-780441	2,000 lb	1/2 in - 48 in	29 in - 43 in

SUMNER

Replacement Jack Heads

Features:

- Rotation of pipe or tubing in all directions

Head Type: Ball Transfer

Material: Steel

SKU	Load Cap.	Pipe Diam
432-780551	1,000 lb	3/8 in - 12 in

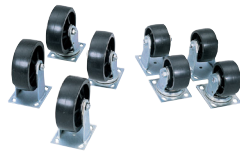
JOBBOX

Heavy-Duty Casters

Features:

- Durable construction
- Set includes a pair of fixed and pair of swiveling casters

Caster Type: 2 Fixed; 2 Swivel



SKU	Wheel Dia
217-1-320990	4 in
217-1-321990	6 in



intertape polymer group®

StretchFlex HWII Hand Grade Films

Features:

- Aggressive cling ensures that there will be no unsightly tails and that your load will stay together
- Excellent load retention lets you wrap your load with less film and feel confident that your product arrives safely
- Superior elongation provides you with lower cost
- Traditional sizes of 12", 15" and 18" are preferred by many of our existing customers
- With excellent puncture resistance, Stretch Flex HWII can wrap even your most irregularly shaped loads

Thickness Size: 17.8 Micron

Color: Clear



SKU	Length	Width	Height
761-HR1781800-00	0.964 in; 1,500 ft	0.964 in; 18 in	1.568 in

StretchFlex HWIV Hand Grade Films

Features:

- Elevated load retention provides consistent wraps for everyday usage
- Ensures that you can wrap irregular loads
- Exceptional elongation provides you with the economy and value you need
- Good puncture resistance
- IPG's cast stretch film features "quiet unwind" and secure cling, eliminating the distracting noise many films generate
- Superior optics mean your product will be easily recognized and can be electronically scanned in the distribution process
- Traditional sizes available in a variety of widths and lengths to accommodate most of your needs

Thickness Size: 80 Micron

Color: Clear



SKU
761-HF2031800-00



LOUISVILLE
LADDERS TRUSTED BY THE PROS FOR OVER 60 YEARS

FM1500 Series Fiberglass Twin Front Ladders

Features:

- Full channel fiberglass rail
- Double-rivet step construction
- Inside spreader braces
- Heavy gauge steel hinges
- Da Boot™

Step/Rung Shape: Flat

Spread: 52 in

Material: Fiberglass

Safety Class: IA



SKU	Capacity Wt	Overall Length	Step Depth	Width
443-FM1506	300 lb	6 ft	3 in	21 7/8 in

FP1400HD Series Brute™ 375 Fiberglass Platform Step Ladders

Features:

- Top rail guard
- Slim, gapless slip-resistant platform

Spread: 56 1/2 in

Material: Fiberglass

Color: Orange



SKU	Step Depth	Width	Height
443-FP1406HD	3 in	0 in; 28 in	0 in; 5.667 ft



LOUISVILLE
LADDERS ENGINEERED BY THE EXPERTS ON LADDERS SINCE 1916

FS1400HD Series Brute™ 375 Fiberglass Step Ladders

Features:

- Molded top with handyman's tool slots
- Heavy duty bottom back brace provides additional strength to the bottom of the ladder
- Spreader braces inside fiberglass rails help keep braces from getting hooked or abused during transit
- Each step features heavy duty steel gussets secured with large-headed, semi-tubular steel rivets for maximum strength
- Vertically mounted U-shaped back braces spaced on one foot intervals provide maximum stiffness and discourage unsafe climbing

Step/Rung Shape: Flat

Safety Class: IAA



SKU	Capacity Wt	Overall Length	Step Depth	Spread
443-FS1404HD	375 lb	4 ft	3 in	28 in
443-FS1406HD	375 lb	6 ft	3 in	40 in
443-FS1408HD	375 lb	8 ft	3 in	52 in
443-FS1410HD	375 lb	10 ft	3 in	65 in

FS1500 Series Fiberglass Step Ladders

Features:

- Extra heavy duty, industrial stepladder
- Nonconductive ladder designed for everyday use by contractors and industry
- Molded top with handyman's tool slots
- Wide back braces
- Full channel fiberglass rail
- Double-rivet step construction
- Inside spreader braces
- Reinforced bottom back brace

Capacity: 300 lb

Step Depth: 3 in

Step/Rung Shape: Flat

Safety Class: IA



SKU	Length	Width	Spread
443-FS1504	48 in	20 in	28 in
443-FS1506	72 in	23 in	40 in
443-FS1508	96 in	26 in	52 in
443-FS1510	120 in	29 in	65 in
443-FS1512	144 in	32 in	78 in

- FS1502 is a folding step stand and is not equipped with Da Boot™

SKU	Spread
443-FS1502	18 1/4 in

FY8000 Series Industrial Fiberglass Step Stands

Features:

- Large molded top
- Heavy gusset bracing
- Large aluminum steps
- Da Boot™

Step/Rung Shape: Flat

Spread: 21 in

Material: Fiberglass

Safety Class: IA



SKU	Capacity Wt	Step Depth	Width	Platform Length	Platform Width	Length
443-FY8002	300 lb	6 in	18 in	14 in	9 1/4 in	24 in

FE3200 Series Fiberglass Channel Extension Ladders

Features:

- Extra heavy duty, channel extension ladder for lighter industrial use
- Full channel nonconductive side rails
- Swivel safety shoes
- Outside slide guides
- Mar-Resistant rail end caps
- QuickLatch™

No. of Sections: 2

Step/Rung Shape: D-Rung

Safety Class: IA

Capacity: 300 lb



SKU	Overall Length	Extended Length	Step Depth	Base Section Width	Fly Section Width
443-FE3216	8 ft - 16 ft	13 ft	3 1/4 in	17 1/16 in	16 1/16 in
443-FE3220	10 ft - 20 ft	17 ft	3 1/4 in	17 1/16 in	16 1/16 in
443-FE3224	12 ft - 24 ft	21 ft	3 1/4 in	17 1/16 in	16 1/16 in
443-FE3232	16 ft - 32 ft	29 ft	3 5/16 in	17 11/16 in	16 11/16 in

* Does not include rope and pulley

GSW Series Steel Rolling Warehouse Ladder w/ Handrails

Features:

- Four spring loaded casters on 2-step to 5-step models
- Casters retract when load is placed on the ladder, setting the ladder firmly in place on rubber tips
- When the load is removed, springs push down the casters enabling the ladder to move about freely
- Models 6-step and taller come equipped with a large 4" swivel caster in front and rigid casters in the rear
- Stepping on bottom step activates the locking mechanism, locking rubber tipped feet in down position: To move the ladder, just step on the unlocking pedal
- The top platform on models 12-step and taller is surrounded on three sides by a 4" high toeboard

Step Depth: 7 in

Step/ Rung Width: 24 in

Step/Rung Shape: Flat

Platform Depth: 10 in

Capacity Wt: 350 lb



SKU	Overall Height	Platform Height	No. of Steps
443-GSW2406	96 in	60 in	6
443-GSW2408	116 in	80 in	8
443-GSW2410	136 in	100 in	10
443-GSW2412	156 in	120 in	12



LOUISVILLE
LADDERS TRUSTED BY THE PROS FOR OVER 40 YEARS

FH1000 Series Classic Fiberglass Shelf Ladders

Features:

- Rubber bumper
- Heavy gusset bracing
- Slip resistant rubber feet
- Double-rivet step construction

Step/Rung Shape: Flat

Safety Class: IA



SKU	Capacity Wt	Overall Length	Step Depth
443-FH1008	300 lb	8 ft	3 in



Mobile Two-Step Stepstool

Features:

- Heavy-duty stepstool glides easily on retractable rubber casters
- Soft, slip resistant pads on both steps
- Wheels retract when stepped on

Color: Black



SKU	Capacity Wt.	Overall Height	Dia.
640-2523-BK	350 lb	13 1/2 in	16 in



Storage Boxes

Features:

- Patented, recessed and concealed lock protectors for maximum security against drilling and cutting lock. (Model 1332 one lock protector only.)
- Enhanced lid bolster for added support and durability
- Finger-groove lid handle for easy opening
- Convenient storage tray on back wall for small items (except Model 1332)
- Steel support arms to hold lid in open position
- Heavy-duty piano hinges with non-removable pin
- Large, fold-down recessed handles for convenient lifting
- Built-in 3-1/2" high skids with holes for easy caster installation
- Optional casters are available separately for easy mobility

Material: 16 Gauge Steel



SKU	Width	Depth	Height
332-2472	72 in	24 in	24 in



Drop Front Piano Boxes

Features:

- EZ Entry 14ga. steel entry door
- EZ Loader™ Skid Bolsters - fork lift accessible from all sides
- Site-Vault™ Security System - one padlock, push aluminum lock bar left to lock and to unlock
- Overlapping lid and side wall security
- Built-in sidewall storage

Material: 16 Gauge Steel



SKU	Capacity Vol.	Width	Depth	Height	Wt.
217-1-683990	47.5 cu ft	60 in	31 in	50 in	405 lb

High-Capacity Drop Front Chests

Features:

- EZ Loader™ Skid Bolsters - fork lift accessible from all sides
- Site-Vault™ Security System - Full length console & two locking points make the lid virtually impossible to bend or pry
- Extra wide, low-incline ramp supports up to 1,000 lbs. for safe and easy loading and unloading



SKU	Capacity Vol.	Length	Width	Height	Wt.
217-1-657990	41.6 cu ft	60 in	31 in	45 in	340 lb

On-Site Chests

Features:

- Site-Vault™ Security System - one padlock, push aluminum lock bar left to lock and to unlock
- EZ Loader™ Skid Bolsters - fork lift accessible from all sides

Material: Steel



SKU	Capacity Vol.	Width	Depth	Height	Wt.
217-1-652990	5.8 cu ft	36 in	20 in	23 3/4 in	95 lb
217-1-653990	9.3 cu ft	42 in	20 in	23 3/8 in	115 lb
217-1-654990	15.4 cu ft	48 in	24 in	27 3/8 in	146 lb
217-1-655990	19.3 cu ft	60 in	24 in	27 3/8 in	178 lb
217-1-658990	23.2 cu ft	72 in	24 in	27 3/8 in	215 lb
217-1-656990	24.3 cu ft	48 in	30 in	33 3/8 in	185 lb

JOBBOX

Piano Boxes

Features:

- Site-Vault™ Security System - one padlock, push aluminum lock bar left to lock and to unlock
- EZ Loader™ Skid Bolsters - fork lift accessible from all sides
- Overlapping lid and side wall security
- Built-in sidewall storage
- Tilt N Stow shelf storage system

Material: Steel



SKU	Capacity Vol.	Width	Depth	Height	Wt.
217-1-688990	34.5 cu ft	60 in	31 in	38 in	290 lb
217-1-681990	38 cu ft	48 in	31 in	50 in	305 lb
217-1-682990	47.5 cu ft	60 in	31 in	50 in	365 lb
217-1-689990	56.5 cu ft	74 in	31 in	50 in	445 lb
217-1-685990*	85.7 cu ft	74 in	34 5/8 in	63 in	500 lb

*75% more capacity than 682990

Slope Lid Boxes

Features:

- Site-Vault™ security system
- EZ Loader™ Skid Bolsters - fork lift accessible from all sides
- Tilt-N-Stow™ hinged shelf lifts up and out of the way

Material: 16 Gauge Steel



SKU	Capacity Vol.	Width	Depth	Height	Wt.
217-1-680990	32.7 cu ft	60 in	30 in	39 1/2 in	245 lb



Field Office

Features:

- Slanted work surface with lockable concealed storage area
- Concealed lock protectors protect locks from drilling and cutting
- Weather stripping on doors help protect documents and tools from the elements
- Lid with heavy-duty gas spring and a locking arm for ease of opening and safety
- Shelving throughout for organizing and storing jobsite tools and supplies
- Grooved front doors for ease of opening and storage compartment access

No. of Doors: 3

No. of Shelves: 3

Material: 16 Gauge Steel



SKU	Capacity Vol.	Width	Depth	Height	Wt.
332-8060DLX	116.5 cu ft	60 in	42 in	80 in	632 lb

JOBBOX

Extra Heavy-Duty Bin Cabinets

Features:

- EZ-Loader™ Anti-Tip Bolster, reduces tipping by 42%
- 2-1/2" tall lip on shelves
- Built-in door shelving
- Heavy-duty bin dividers can be moved up to 2"
- Open upper shelf

No. of Doors: 2

Material: 16 Gauge Steel



SKU	Capacity Vol.	Width	Depth	Height
217-1-693990	49 cu ft	72 in	24 in	61 in

Extra Heavy-Duty Cabinets

Features:

- EZ-Loader™ Anti-Tip Bolster, reduces tipping by 42%
- Electrical cable access holes
- Door frame corner reinforcement
- Stacked and welded steel hinges
- Heavy-duty, high-strength shelves
- Grip-Rite channel

No. of Doors: 2

Material: 16 Gauge Steel



SKU	Capacity Vol.	Width	Depth	Height	Wt.
217-1-694990	47.5 cu ft	60 3/4 in	24 1/4 in	60 1/4 in	379 lb
217-1-698990	58.7 cu ft	60 1/8 in	30 1/4 in	60 3/4 in	436 lb

Heavy-Duty Field Office

Features:

- One lock opens all the doors
- Beveled rain-resistant overlapping doors
- Rain gutter & stainless steel hinges
- High-capacity, lockable storage desk
- Bright white interior for improved visibility
- 8 side wall storage bins

No. of Doors: 3

Material: 16 Gauge Steel



SKU	Capacity Vol.	Width	Depth	Height	Wt.
217-1-674990	104 cu ft	63 in	42 in	80 in	660 lb

JOBOX

Industrial Cabinets

Features:

- EZ-Loader™ Anti-Tip Skid Bolster - fork lift accessible from all sides
- Three-2 1/2" drawers support 75 lbs. and Five-5 1/2" deep drawers support up to 125 lbs.
- Hand or foot operated latch release for convenience
- Padlock (not included) protected from bolt cutters and pry bars

No. of Drawers: 8

No. of Doors: 2

Material: 16 Gauge Steel



SKU	Capacity Vol.	Width	Depth	Height	Wt.
217-1-679990	58.7 cu ft	60 1/8 in	30 1/4 in	60 3/4 in	436 lb

Rolling Work Benches

Includes: (2) Fixed Casters; (2) Lockable Swivel Casters

Depth: 26 7/8 in

Material: Steel



Features:

- Fully adjustable drawer and shelf interior with four drawer sizes available
- Convenient high capacity storage for small items in 3" deep built-in door shelves
- Reinforced 12-gauge top, bottom with reinforced 16-gauge doors with built-in shelves
- Two heavy-duty push handles for installing one on both ends for easier maneuvering
- 125-pound capacity drawers

SKU	Capacity Vol.	Length	Height	Caster Dia	Wt.
217-676990*	21.7 cu ft	43 7/8 in	38 1/2 in	4 in	294 lb
217-678990†	24.6 cu ft	49 7/8 in	40 5/8 in	6 in	342 lb

Features:

- Fully adjustable drawer and shelf interior with four drawer sizes available
- Convenient high capacity storage for small items in 3" deep built-in door shelves
- Rugged 14-gauge steel 3/8" hinges are stacked and welded for maximum strength and security
- High capacity 18-gauge steel drawers with heavy-duty ball bearing glides

SKU	Capacity Vol.	Length	Height	Caster Dia	Wt.
217-675990‡	21.7 cu ft	43 7/8 in	38 1/2 in	4 in	266.5 lb

* Includes: (1) Shelf; (4) 5-1/2 in. Deep Drawers

† Includes: (1) 5-1/2 in. Deep Drawer; (1) Shelf; (2) 4-1/2 in. Deep Drawers; (3) 2-1/2 in. Deep Drawers

‡ Includes: (2) 5-1/2 in. Deep Drawers; (2) Shelves

Specialty Cabinets

Features:

- Wide internal rain gutter keeps water from interior
- Fixed and movable shelves, storage locker and tall, open closet
- Super-strong latching hasp also protects padlock (not included)
- Eight heavy-duty 4" casters

Material: 16 Gauge Steel



SKU	Capacity Vol.	Width	Depth	Height	Wt.
217-692990	58 cu ft	62 1/2 in	30 in	63 1/2 in	472 lb

DELTA

Delta Consolidated Industries, Inc.

Lock-Down Portable Chests

Features:

- Convenient size provides lockable storage space in almost any location
- Mounting brackets can be bolted on any flat surface, internal locking mechanisms secure Hopper® chest to base plates
- Easy-to-release mechanism for relocating or storing chest
- Key operated cam Lock for tight-fitting lid and security
- Full weather stripping resists dust and moisture
- Removable sliding tray for storing smaller tools and parts

Material: Steel

Wt.: 31 1/2 lb



SKU	Capacity Vol.	Length	Width	Height
217-810000	2.2 cu ft	32 in - 32 7/16 in	10 13/16 in - 11 1/4 in	12 3/4 in

JOBOX

StorAll® Drawers

Features:

- Grip-and-release drawer stop safety system
- High-strength 3/16" steel plate bearing tractors
- Removable 250 lb. heavy-duty conveyor roller bearings
- Rugged 14-Ga. steel handles
- Tough ArmorBrite™ powder paint finish
- Anti-skid strips

No. of Section Dividers: 3

No. of Drawers: 4

No. of Galvanized Dividers: 24

Material: Steel



SKU	Capacity Vol.	Width	Height	Wt.
217-664980	5 cu ft	48 in	9 in	374 lb



Liquid Transfer Tanks

Features:

- Heavy-duty, reinforced steel construction for long term durability
- Full center baffles for extra strength, 2" NPT reinforced bungs and tie-down bar for stability
- Lockable cap and coupler allow outside venting
- Filter system recommended

Material: Steel



SKU	Capacity Vol.	Shape	Length	Depth	Height	Wt.
217-484000	100 gal	Rectangle	45 1/4 in	23 1/4 in	24 in	144.5 lb
217-480000	103 gal	L-Shaped	59 5/8 in	31 in	9 in - 25 in	200 lb



ActionPacker® Storage Container

Features:

- Durable weather-resistant construction
- Tough, lockable latches
- Stackable containers easily tie down with bungee cords
- Tough lockable latches



SKU	Capacity Vol.	Length	Width	Depth
325-1170-04-38	8 gal	14 1/2 in; 19.9 in	11.8 in	14 1/2 in
325-1172-04-38	24 gal	18.563 in; 26 1/16 in	16.937 in; 16 15/16 in	18 9/16 in
325-1191-01-38	35 gal	18 1/2 in; 34 1/2 in	16 3/8 in	18 1/2 in
325-1192-01-38	48 gal	20 1/2 in; 43 3/4 in	17.156 in; 17 5/32 in	20 1/2 in

Horizontal Storage Sheds

Features:

- Tough, durable floor
- Molded-in grooves for one shelf (not included)
- Lockable (lock not included)
- 6 interlocking easy to assemble panels
- Hinged roof design with prop bar provides walk in accessibility
- Tough durable floors
- Molded-in grooves for 3 shelves
- Lockable

No. of Doors: 2

Opening Type: Hinged Door; Hinged Lid

Color: Olive; Sand Stone

Material: Plastic



SKU	Capacity Vol.	Width	Height	Length	Wt.
325-3747-01-OLVSS	32 cu ft	56 1/2 in	48 in	32 in	98 lb

Storage Sheds

Features:

- Tough, durable floors
- 8 interlocking, easy-to-assemble panels
- Molded-in grooves for 3 shelves (not included)
- Lockable
- Tough durable floors
- 8 interlocking easy-to-assemble panels

Color: Olive; Sand Stone



SKU	Capacity Vol.	Width	Height	Length	Wt.
325-3746-01-OLVSS	52 cu ft	36.526 in; 56 in	36.526 in; 77 in	32 in; 36.526 in	130 lb



Vertical Storage Sheds

Features:

- Grid floor helps keep long handled tools in place
- 7 interlocking, easy to assemble panels
- Molded-in grooves for 4 shelves (not included)
- Lockable (lock not included)

No. of Doors: 2

Opening Type: Hinged Door

Color: Olive; Sand Stone

Material: Plastic



SKU	Capacity Vol.	Width	Depth	Height	Wt.
325-3749-01-OLVSS	17 cu ft	32 in	22 in	72 in	55 lb