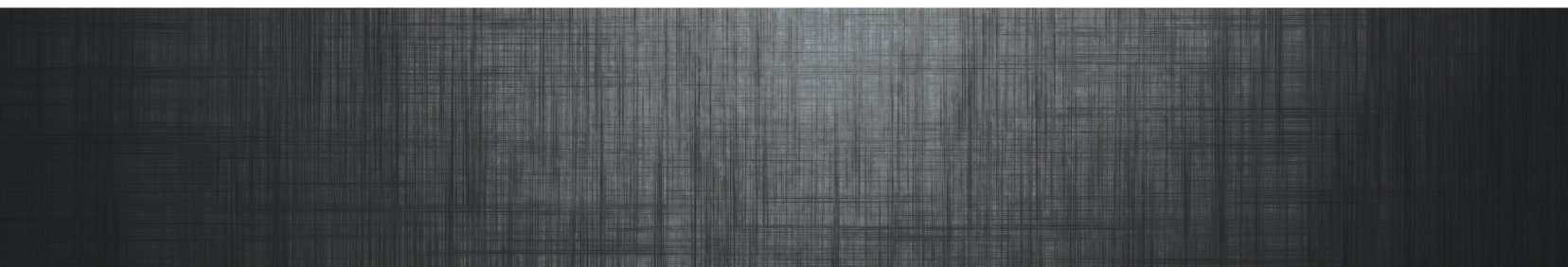


**Diaphragm Pumps.....454**  
**Fuel Pump Accessories.....455**  
**Fuel Pumps .....454, 455**  
**Grease & Oil Pumps .....455, 456**

**Rotary Pump Parts & Accessories .....457**  
**Rotary Pumps .....457**  
**Water & Solvent Pumps .....456, 457**





## Diaphragm Pumps

### Features:

- Features a patented "unbalanced" air valve design that avoids stall-out, even under low air inlet pressures

### Features:

- Utilize bolted fasteners for leak-tight integrity

**Diaphragm Material:** Nitrile



SKU
383-666100-362-C

### Features:

- IR Diaphragm Drum Pumps feature a patented "unbalanced" air valve design that avoids stall-out, even under low air inlet pressures
- They utilize bolted fasteners for leak-tight integrity
- Utilize bolted fasteners for leak-tight integrity

**Applicable Materials:** Solvents; Slurries; High-Viscosity Liquids such as Paints and Waste Oils

**Outlet Size:** 1/2 in (NPTF)

**Diaphragm Material:** Polyurethane

SKU	Flow	Inlet Size
383-66605J-388	13 gal/min	1/2 in NPT(F)

### Features:

- They utilize bolted fasteners for leak-tight integrity
- Applicable Materials:** Oil; Water; Hydraulic Fluids; NOT for Acetone, MEK or Chlorinated Hydrocarbons

**Outlet Size:** 1 in (NPTF)

**Diaphragm Material:** Hytrel

SKU	Flow	Inlet Size
383-666100-3C9-C	35 gal/min	1/4 in NPT(F)

## FILL-RITE

## Fill-Rite® Rotary Hand Pumps

**Inlet Size:** 1 in (NPT)

**Applicable Materials:** Fuels; Oils

### Features:

- Anti-siphoning valve
- Check valve and strainer
- Pump may be padlocked
- Steel handle and wood grip
- Pump can be set up for reverse flow
- Adaptable for drums, kegs, and storage tanks
- Series 800C meter is available



SKU	Vol. @ No. of Strokes	Outlet Size	Body Material
285-FR112	10 gal @ 100	3/4 in (NPT)	Aluminum

### Features:

- 7.5 gallons per 100 revolutions
- Compatible with diesel, E15, kerosene, B20 and light oils
- Pail spout
- Tank or barrel mounting

SKU	Vol. @ No. of Strokes	Outlet Size	Body Material
285-SD62	8 1/2 gal @ 100	1 in (o.d.)	Cast Iron

## Piston Hand Pumps

### Features:

- Anti-siphoning valve
- Check valve and strainer
- Pump may be padlocked
- Steel handle and wood grip
- Pump can be set up for reverse flow
- Adaptable for drums, kegs, and storage tanks
- Goose neck spout and pail hook

**Vol. @ No. of Strokes:** 20 gal @ 100

**Construction:** Aluminum Body w/Stainless Steel Liner

**Designated Fluid:** Fuel; Oil



SKU	Inlet Size	Outlet Size
285-FR152	1 in (NPT)	3/4 in (NPT)

## Rotary Vane Pumps

### Features:

- Pump may be padlocked
- Hose Length:** 12 ft  
**Body Material:** Cast Iron  
**Seal Material:** Buna-N



### Features:

- Automatic bypass valve
- Steel telescoping suction pipe
- 3/4" x 12' hose and main
- Explosion-proof permanent magnet motor
- 30-minute duty cycle/not for continuous operation
- Ball bearing construction, no lubrication required

**Inlet Size:** 3/4 in

**Outlet Size:** 3/4 in

**Includes:** 3/4" x 12' Hose, 3/4" Manual Nozzle, Suction Pipe, Battery Cable

SKU	Flow	Voltage	Length
285-FR610G	15 gal/min	12 VDC	17 5/8 in

### Features:

- Built-in check valve, bypass valve and thermal expansion valve
- 1" diameter X 12' hose
- Explosion-proof permanent magnet motor
- 30-minute duty cycle/not for continuous operation
- Ball bearing construction, no lubrication required
- 2" threaded base for tank openings

**Inlet Size:** 1 in

**Outlet Size:** 1 in

**Includes:** 1" x 12' Hose, 1" Manual Nozzle, Suction Pipe, Battery Cable

SKU	Flow	Voltage	Length
285-FR4210G	20 gal/min	12 VDC	17 5/8 in

### Features:

- Thermal overload protection
- Internal bypass valve
- Built-in strainer
- Built-in check valve
- Machined carbon vanes
- 3 wire 12 ga. battery cable

**Inlet Size:** 3/4 in

**Outlet Size:** 3/4 in

**Includes:** 3/4" x 12' Hose, 3/4" Manual Nozzle, Suction Pipe

SKU	Flow	Voltage	Length
285-FR1210G	15 gal/min	12 VDC	17 5/8 in

Industrial Safety Welding Oilfield Construction

## FILL-RITE

### Utility Rotary Vane Pumps

**Features:**

- Heavy-duty switch, thermal overload protection and junction box
- Carbon rotor vanes and ceramic/carbon seal reduce wear and repair expense
- Integral check valve with pressure relief on outlet side reduces pressure drop and improves vertical lift
- Easy removable strainer
- 2" threaded base for tank openings

**Nozzle Type:** 3/4 in. Manual

**Inlet Size:** 1 in (NPT)

**Outlet Size:** 3/4 in

**Applicable Materials:** Fuels; Oils



SKU	Flow	Includes
285-FR700V	20 gal/min	
285-FR701V	17 gal/min	800C Meter

### Mechanical Flow Meters

**Pressure:** 50 psi

**Display Type:** Gallon or Liter

**Features:**

- The easy reset register indicates product use up to 999.9 gallons or 9,999 liters
- Flexible flow ports can be positioned vertically or horizontally
- Measure fluids at temperatures up to 150°F

**Display Type:** 4 Digit



SKU	Port Size	Accuracy	Flow
285-901-1-1/2	1 1/2 in	±2%	6 gal/min - 40 gal/min

**Features:**

- The Series 800C meter's exclusive unicast component mounting configuration assures consistency, particularly in gravity flow applications
- Flow ports can be positioned vertically or horizontally
- Strainer for gravity-flow applications traps tank contaminants
- Handles fluid of any viscosity

**Display Type:** 3 Digit

SKU	Port Size	Accuracy	Flow
285-807C-1	1 in	±1%	5 gal/min - 20 gal/min

**Features:**

- The Series 800C meter's exclusive unicast component mounting configuration assures consistency, particularly in gravity flow applications
- Flow ports can be positioned vertically or horizontally
- Strainer for gravity-flow applications traps tank contaminants
- Handles fluid of any viscosity

**Display Type:** 3 Digit



SKU	Port Size	Accuracy	Flow
285-807C	3/4 in	±1%	5 gal/min - 20 gal/min



ALEMITE

### Multi-Pressure Bucket Pumps

**Features:**

- Adapts pump to all lubricant and operating conditions
- Vol. @ No. of Strokes:** 0.333 oz @ 1
- Outlet Type:** Hose/Coupler
- Drive Type:** Lever Action
- Mechanism:** Piston
- Designated Fluid:** Petroleum



SKU	Drum Cap.	Operating Pressure	Hose Length
025-7149-A4	35 lb	2,500 psi - 5,000 psi	5 ft



### Thunder Pump Packages

**Features:**

- Lubrication package features a high flow pump and all components needed to service equipment
- Flow Rate (Mass):** 2.5 lb/min
- Drum Size:** 35 lb.
- Inlet Size:** 1/4 in NPT(F)
- Applicable Materials:** #2 Grease
- Housing Material:** Aluminum/Steel
- Includes:** 10 ft. Hose; 2 in. Pump; Drum Cover; Z-Swivel



SKU	Operation Ratio
383-LP2002-1-B	50 : 1



### Air Operated Transfer Pumps

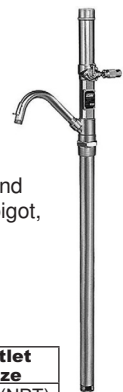
**Operation: Ratio:** 1 : 1

**Inlet Size:** 1/4 in NPT(F)

**Mechanism:** Piston

**Features:**

- Stub pump design provides the versatility to transfer and dispense controlled amounts of lubricant using an oil spigot, control valve or meter
- Construction:** Alum/Steel/Plastic
- Includes:** Air Coupler; Air Nipple; Bung Bushing; Suction Tube



SKU	Flow	Drum Size	Operating Pressure	Outlet Size
438-84829	14 gal/min	16 or 55 Gal.	150 psi	3/4 in (NPT)

**Features:**

- Transfer pump quickly transfers fluids directly from drums
- 2" bung bushing adjusts to varied drum length
- Designed to stall against lubricant pressure
- Construction:** Aluminum/Steel

SKU	Flow	Drum Size	Operating Pressure	Outlet Size
438-82230	20 gal/min	55 Gal	150 psi	1 1/2 in (NPT)



## Series 20 High Pressure Portable Grease Pumps

**Operation:** Ratio: 50 : 1  
**Operating Pressure:** 150 psi  
**Designated Fluid:** NGLI 0-2 Grease  
**Includes:** 1 1659 Air Nipple;  
 740 Control Valve;  
 75084 High Pressure Hose;  
 81387 Universal Swivel;  
 815 Air Coupler;  
 82399 Straight Swivel



**Features:**

- Assures positive prime at lowest temperature
- Drum not included

**Drum Size:** 120 lb.

SKU	Flow	Hose Length	Includes
<b>Base Type: 80895 roll-a-round</b>			
438-917	80 cu. in./min; 45 oz/min	7 ft	46007 Drum Cover; 84780 Follower Plate

**Features:**

- Steel cover has three thumb screws to clamp securely to refinery container
- Carrying handle provides easy portability
- Follower plate assures positive prime at lowest temperatures
- Cover rust-proofed and finished in Lincoln red
- Bucket not included

**Drum Size:** 25-50 lb.

SKU	Flow	Inlet Size	Hose Length	Includes
438-989	80 cu. in./min; 45 oz/min	1/4 in NPT(F)	7 ft	84775 Follower Plate; 91499 Drum Cover



## Barrel Pumps

**Features:**

- Engineered for heavy duty use
- Two-piece telescoping suction tube
- Rugged epoxy finish pump assembly
- Discharge spout thread fits all garden hose fitting
- Complete with a standard bung adapter, tough all steel foot valve and piston valve

**Vol. @ No. of Strokes:** 10 oz @ 1  
**Construction:** Steel  
**Designated Fluid:** Oil Based Fluids



SKU	Drum Vol.
570-55-123	30 gal - 55 gal

## Rotary Barrel Pumps

**Features:**

- For transferring non-corrosive petroleum-based fluids of light to medium viscosity
- Single direction 2-vane pump with rugged cast iron housing
- Telescopic 42" steel suction pipe

**Construction:** Cast Iron Housing  
**Designated Fluid:** Petroleum Based Fluids

SKU	Vol. @ No. of Strokes
570-55-303	1 gal @ 18



## ML Oil Pumps

**Features:**

- Replacement pump
- Specifically designed for the 1224 Threading Machine

**Body Material:** Steel

SKU	Voltage
632-27307	115 V



## Plastic Barrel Pumps

**Features:**

- Polypropylene housing, rod with Viton seals

**Vol. @ No. of Strokes:** 9 oz @ 1  
**Style:** Lever Style  
**Construction:** Polypropylene Housing  
**Designated Fluid:** Alcohol; Diesel; Gas; Kerosene; Mild Acid Solutions; Mild Alkali Solutions; Petroleum Based Products; Water; Water Based Chemicals  
**Rod Material:** Stainless Steel

SKU	Drum Vol.	Height
570-55-161	5 gal - 55 gal	14.35 in



# RIDGID

## Submersible Sump Pumps

**Features:**

- Top suction intake filters debris for increased reliability
- 1 1/2" diameter discharge for higher flows
- Fits into small 11" diameter sump basins

**Model:** 85937



SKU	Flow	Voltage
632-85937	4,860 gal/h	115 V



## Submersible Cast Aluminum Utility Pumps

**Features:**

- 1320 gallons per hour
- Rugged thermoplastic body resists corrosion and impact
- Self-cleaning screen reduces maintenance
- Cord wrap feature for organized storage and portability
- 8 ft power cord
- Heavy-duty aluminum construction maximizes pump life
- Easy to operate
- Includes garden hose adapter

**Includes:** ; Includes garden hose adapter

**Model:** 2300-04



SKU	Flow	Voltage
663-2300-04	1,320 gal/h	115 V

## Submersible Thermoplastic Utility Pumps

**Features:**

- 1320 gallons per hour
- Rugged thermoplastic body resists corrosion and impact
- Self-cleaning screen reduces maintenance
- Cord wrap feature for organized storage and portability
- 8 ft power cord
- Portable and lightweight
- Includes garden hose adapter

**Construction:** Thermoplastic

**Includes:** Owner's Manual; Includes owner's manual and garden hose adapter.

**Model:** 2305-04



SKU	Flow	Length	Height	Voltage
663-2305-04	1,320 gal/h	7 1/2 in	12 3/4 in	115 V

# BSM

Pump Corporation

## B-Series Pedestal Mount Gear Pumps

**Features:**

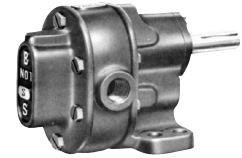
- BSM 'B' and 'S' series pumps are a good choice for a variety of recirculating, mixing, transfer, hydraulic, and metering applications
- These pumps are available pedestal or flange mounted, with integral relief valve
- Constructed of cast iron, ductile iron, or bronze
- Seal options include compression packing, lip seal, and mechanical seal
- Standard pumps will operate at 200 psi and 250 deg. F
- Typical liquids pumped include various oils, machine tool coolant, solvents, resins, paints, varnishes, and many other liquids

**Speed:** 900 rpm

**Rotation:** CW or CCW

**Gear Material:** Steel

**Mounting:** Pedestal



SKU	Model No.	Displacement	Slip gpm/psi
117-713-1-1	1	0.0052 Gals/Rev	0.0022
117-713-2-1	2	0.0104 Gals/Rev	0.0023
117-713-2-7	2	0.0104 Gals/Rev	0.0023
117-713-3-1	3	0.0025 Gals/Rev	0.0025
117-713-3-7	3	0.0025 Gals/Rev	0.0025

## PFG Series Rotary Gear Pumps

**Features:**

- Used primarily in hydraulic and lubrication systems, these pumps provide exceptionally quiet and efficient pumping over a wide range of speeds and pressures

**Displacement:** 0.0012 Gal/Cycle

**Slip gpm/psi:** 0.0002

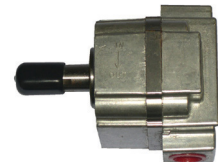
**Rotation:** CW

**Gear Type:** Spur

**Gear Material:** Steel

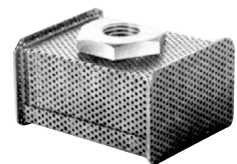
**Housing Material:** Cast Iron

**Mounting:** Face



SKU	Model No.	Speed	Length
117-713-720-2	20	3,450 rpm	4.14 in

## Rotary Gear Pump Accessories



SKU	Length	Width	Height	Thread Size
117-713-9003-13	7 1/8 in	4 5/8 in	3 1/8 in	3/4 in (NPT)



**Work Smarter.**



**Productive solutions for  
any cleaning need**